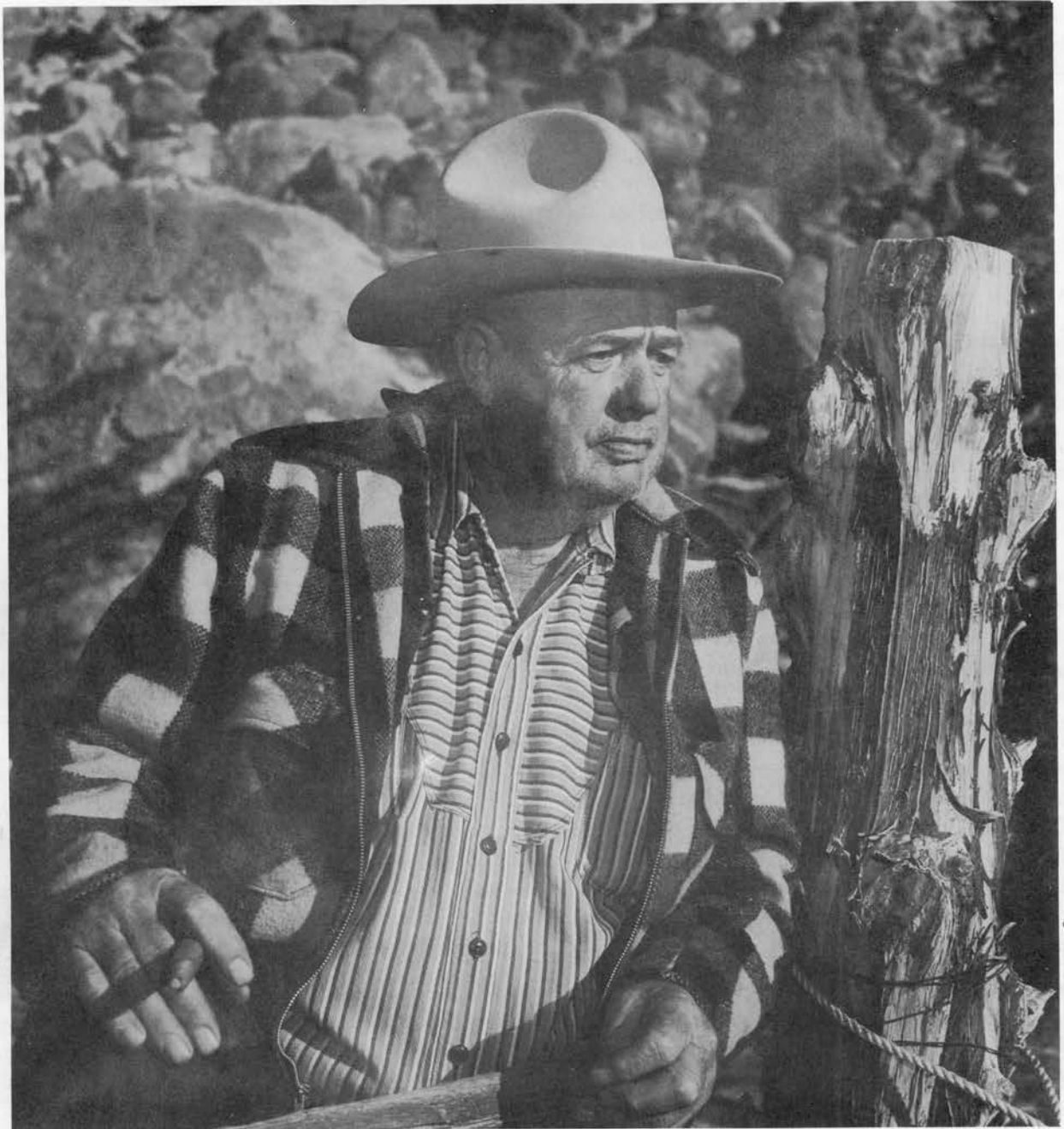


LONE PINE  
*Silver Anniversary*  
**STAMPEDE**



RUSSELL SPAINHOWER  
*First President, Lone Pine Stampede*

---

# THE HISTORY OF THE LONE PINE STAMPEDE

In 1963 the Stampede show was changed to a non professional type show due to the increasing cost of procuring stock and professional participation, and the 1964 show will follow the same pattern with some new innovations included. A group of local riders have formed the Lone Pine Stampede Roping club. Plans are under way to stage other events throughout the year including a quarter horse show this fall with tentative dates set for October 3 and 4.

Officers for the 1964 show are Elmer Humphrey, president; Ben Casad, vice president; Marian Medford, secretary; Henry Olivas, stock; Floyd Sweat, grounds; Ted Garcia, tickets; Derald Webb, treasurer; Al Stiller, publicity.

Local citizens 25 years ago made plans to stage these spectacular days of the old west and bring visitors and champion cowboys from the far ends of the country to our unique little town for a chance to relive the wild west in a gala weekend celebration. Many local businessmen may well be credited with its inception.

Through the efforts and community spirit of a few local citizens, the first big show of rodeo fame was instigated. Wilfred Cline, stockman, and the late Russell Spainhower, Southern Inyo rancher and cattleman, started the ball rolling for what became a traditional spring event. Stock for the rodeo was provided by Cline and by a unanimous vote, at a meeting called for organization, Spainhower was elected Stampede president, a position he held for nine consecutive years. Directors appointed to serve with the new president were Ben Baker, Howard Miller, Fred Reynolds, Otto "Slim" Honerlah, Ted Cook and Wesley Logan. Walter Jones was elected secretary-treasurer, a post he filled continuously for 21 years. Announcer for this first rodeo was Jack Hopkins, this spot is still occupied by him and he continues to cover the shows in paramount form.

After eight years of fine performances the Stampede became an incorporated organization and then became a RCA show of top caliber. The first such show boasted prize money of \$850 plus entry fees and during the years of growing popularity the last purses totaled \$1800 plus entry fees, making prizes running close to \$4000.

As the Stampede continued to grow and become more widely known amongst the professionals such top-notch names in the rodeo world as Casey Tibbs, Rex Connley, Bill Linderman, Ross Dollarhide, Chuck Shepard, Don Adams, Lawson Fore, Bill Hogue, Enoch Walker, famed Canadian cowboy, appeared on the rodeo program. Among other notables who have added much to the local shows with their stellar performances have been Joaquin Sanchez, Fes Reynolds and Wes Curtis.

Let us not forget that along with these professionals, our local businessmen have contributed much in making these shows the pride of the community. Following the nine year term of Russell Spainhower as president, by-laws were amended to read a one year term for each president. The following citizens served well as leaders of the Stampede Inc.: Jack Hopkins, Ben Baker, Fred Reynolds, Tom Noland, Norvil Aigner, Henry Olivas, Lefty Edmonston, C. M. Richards, Bob Rutherford, Gwen Gardner, Bud Slater and Joe Bonham. Other names, to mention a few, who have played major roles in the successful celebrations are Frank Chrysler, Ted Cook, John Morris and Howard Miller.

Calendar of events during these many years of celebrations lists scores of activities as well as the rodeo. Parades have been of first class quality with as many as seven bands competing for prizes and trophies; whiskerino contests, sponsored by the Lions Club, brought keen rivalry; outstanding pet parades for the kiddies have been the pride and joy of youngsters; carnivals too came in for a share in the excitement; a businessmen's burro race for several years was a stimulating part of the annual weekend; barbecues of highest quality, staged by local organizations, drew hundreds of guests and the coveted crown for the "Stampede Queen" was cherished by many popular young belles. Jean Noland was one of the first queens and numerous other young teenagers have since held the honor.

In the beginning rodeos were held on what is now known as the town ball park and as they continued to gain momentum plans materialized for the present grounds which are one of the best. Hundreds of persons may be seated on the fine grandstands, and monies from the annual shows have been used for improving the grounds to the present high standards. What more picturesque setting could any arena boast than the spectacular snow clad peaks of Mt. Whitney fronted by the pictorial Alabamas for a contrasting background? Where in these United States could this be equaled?

Credits for Stampede book—PICTURES, Anchor Ranch; Phillips Camera Shop, Bishop; ARTWORK, Loren Ray; PRINTING AND TECHNICAL ASSISTANCE, Chalfant Press; And to all the advertisers who have made this book possible we extend thanks—THE STAMPEDE COMMITTEE.

---

# **FIRST PRESIDENT OF LONE PINE STAMPEDE**

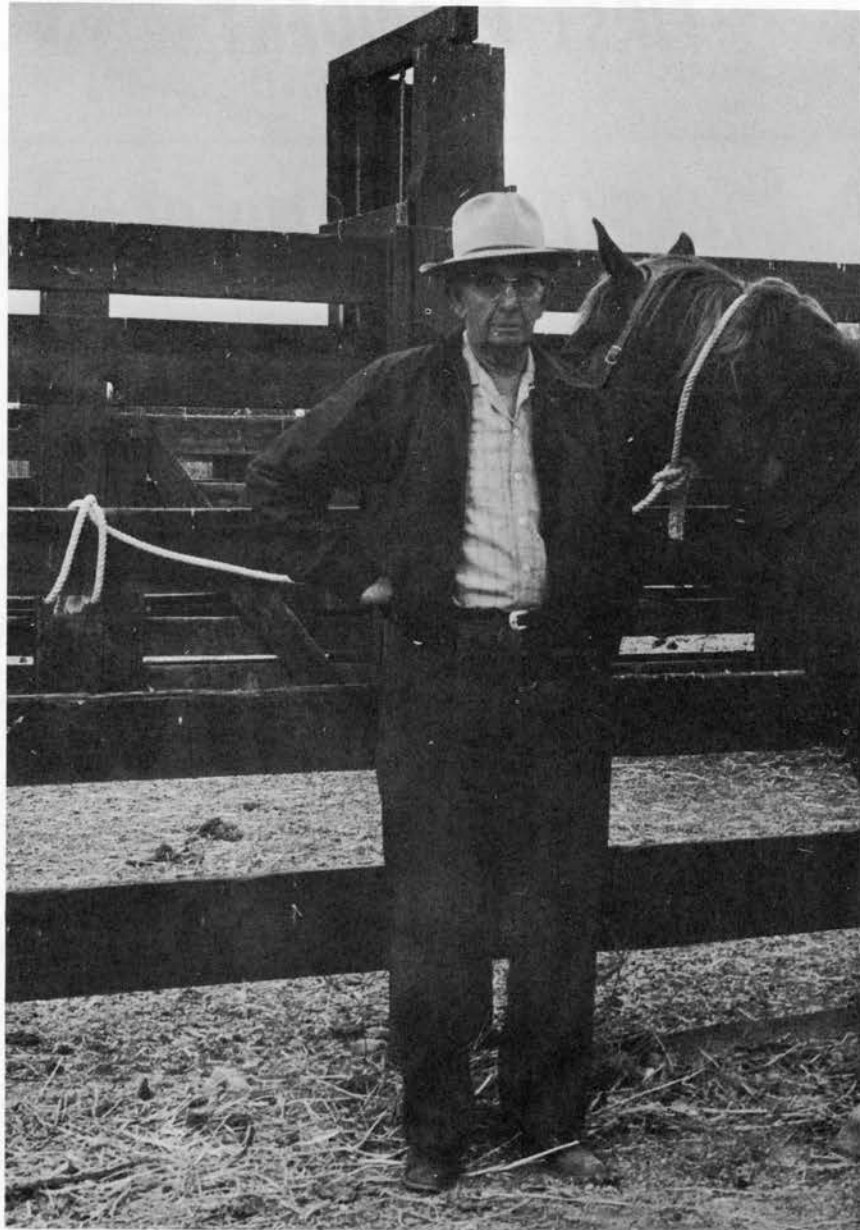
The first president of the Lone Pine Stampede, Russell B. Spainhower, came to California from North Carolina when but a small child, and spent much of his boyhood on the old Carson Ranch where the City of Torrence now stands. Perhaps it was while living there that Russell acquired his love of cattle, of ranch life, and no doubt dreamed then of some day having such a place of his own.

Coming to Inyo County as an employee of the Department of Water and Power, City of Los Angeles, in 1909, he saw the Owens River Valley change from a ranching and agricultural area to one of desert. This change, however, did not deter him from his dream and desire to have a ranch of his own.

In 1913 he married Katherine Walter of Independence, and after a few months they moved to Lone Pine and to the old Lucas Ranch which had already been sold to the City of Los Angeles. Here they lived many years while Russell began to realize his dream of having a "spread" of his own. Later they bought the adjoining "Anchor Ranch" from the late Dave Holland, and moved on to it some years later.

Through the years, though continuing on with the cattle business, Russell became contact and location man for the movies, working with such companies as, 20th Century-Fox, Paramount, MGM, Universal, and many others. His opinion and judgment were highly respected by the movie directors, and his friendship treasured.

## ***Lone Pine's 25th STAMPEDE GRAND MARSHALL***



WALTER JONES

*Walter has served with the Lone Pine Stampede in many capacities and has given many hours of time and talent freely to keep the show going during its 25 years of history.*





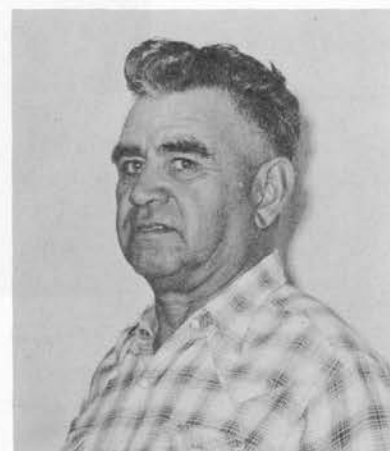
THE QUEEN AND HER PRINCESSES WHO WILL REIGN OVER THE SILVER ANNIVERSARY STAMPEDE. QUEEN KATHY HASTINGS, CENTER, SURROUNDED BY L. TO R. BY PRINCESSES ANN MARIE MIKE, CLAUDIA BEHLING, CHERYL BUTLER AND JEAN AMICK.



BEN CASAD



ELMER HUMPHREY



HENRY OLIVAS



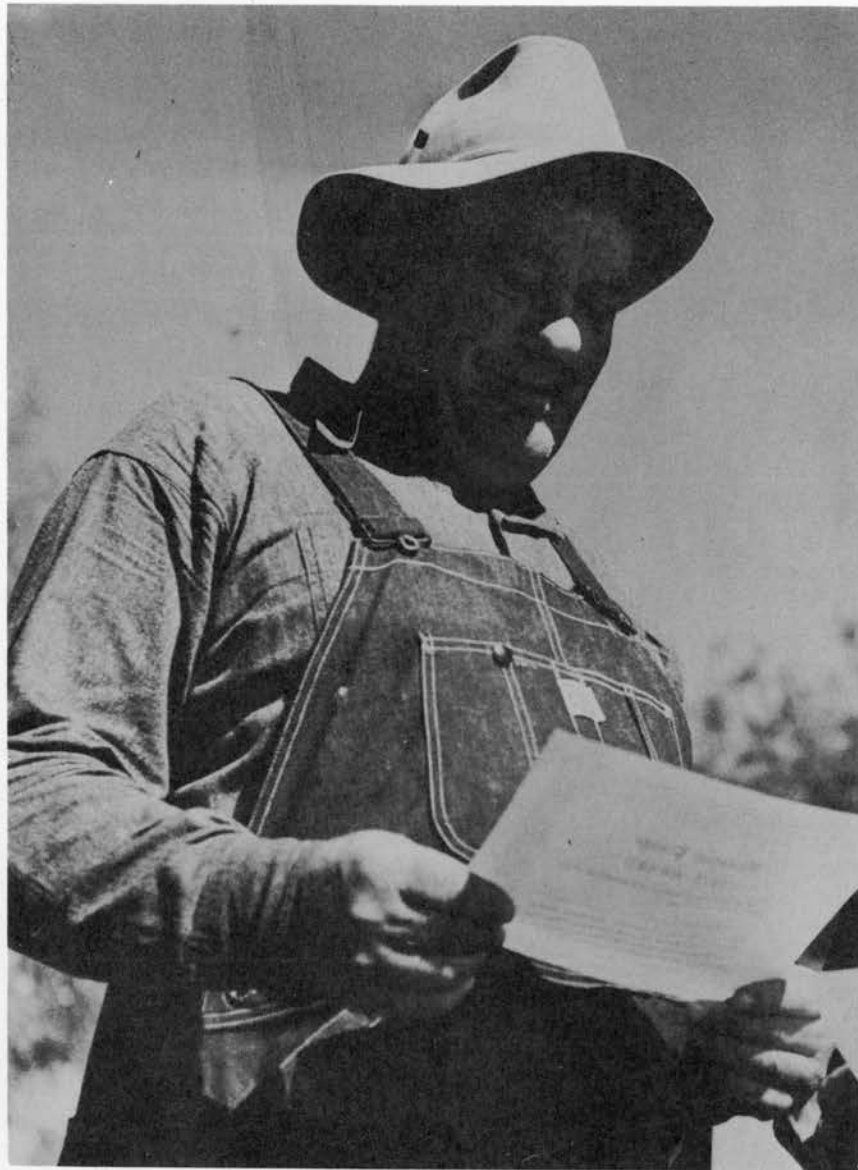
FLOYD SWEATT



MARION MENFORD



AL STILLER



Otto Herman Honerlah, affectionately known to his countless freinds in Southern Inyo as "Slim." Slim was a large, warm-hearted man. He was never formal in religion, politics, or friendship. If he had thought that money was important he would have been rich. Instead of that, he took care of his friends. If he had no money, himself, which was a reasonably frequent state, he would work and charge the amount that his friend needed. Sometimes this was high. Sometimes it was low. But it was always exactly what his friend needed.

Slim was a little bit different. The mountains, the sky, the space were God for him.

He never complained. He was a man.

He came to Inyo county 44 years ago. He came up on a job. He thought he would return. But he looked at the mountains, the space, and the sky. He stayed here. This was a large, brawling, noisy, sentimental man. He hit Inyo county, and Inyo county hit him. He was young when he arrived. He was young when he died. He was a man who loved the world. To try to put such a man in words is impossible. But Slim was a man that the little kids will always remember when they're grown. This was a man with no miserliness. Money was made to spend. This was a man who was boss of the job and boss of himself. This was a man without smallness, without pettiness, and with love for his fellowmen and love for the world.

This was a man who lived his life out with honor, dignity and truth.

His help to the Lone Pine Stampede was an inspiration that kept the show alive through the years.

# MILOVICH BROS. INC.

SERVING INYO & MONO COUNTY  
SHELL OIL PRODUCTS  
CUMMINGS SALES & SERVICE  
GOODYEAR TIRES & RECAPPING



**CUMMINS ENGINES**

PHONE : UPton 3-3524

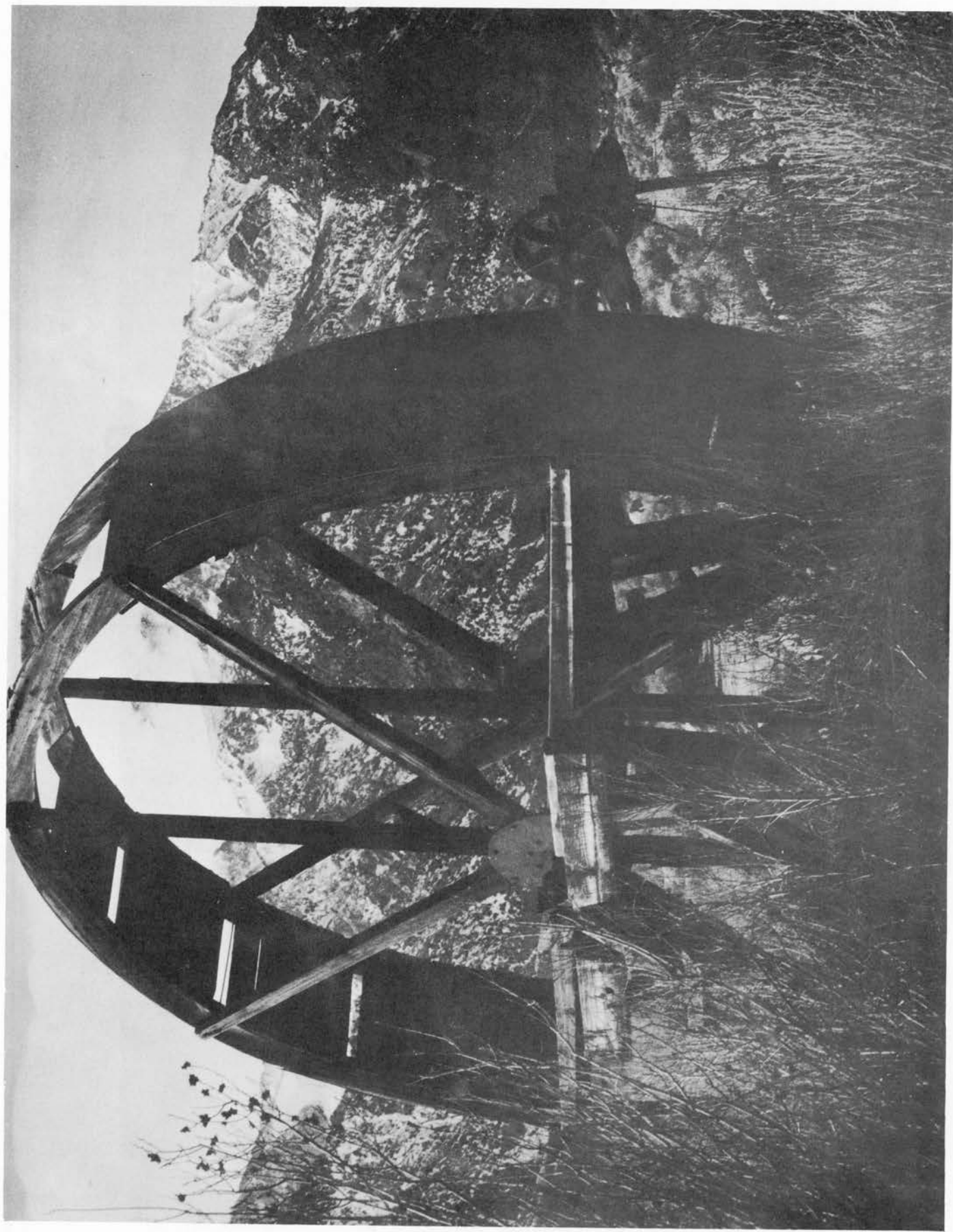
BOX 222

BISHOP, CALIF.

**JOSEPHS**  
PIONEER PROGRESSIVE MERCHANTS · EST. 1895

Retail & Wholesale Groceries - Dry Goods

BISHOP  
and  
LONE PINE



OLD WATER WHEEL, LONG RETIRED



# HOUSE OF GOOD SPIRITS

"When Low In Spirits  
See Us."

LIQUORS

DELICATESSEN

DRIVE-IN PARKING



1900 So. Main  
TR6-6791  
LONE PINE, CALIF.

# Lone Pine Feed and Nursery

HAY, GRAIN  
POULTRY SUPPLIES & EQUIP.  
GARDEN TOOLS & SEEDS  
FERTILIZERS & SPRAYS

Maynard Rossi, Owner  
840 So. Main  
Lone Pine, Calif.

# Best Wishes to the Lone Pine Stampede



We Are  
Featuring

## "The Backyard of NEVADA"

by C. Lorin Ray

Completely hand lettered text  
and illustrations by the author.

*a Centennial Edition*

\$ 3.00 plus tax

CHALFANT PRESS  
*Lone Pine*

## ★ Best Wishes and Success

to the

25th Anniversary

Stampede. *from the*

LONE PINE  
LIONS CLUB

## Bank of America

NATIONAL TRUST AND  
SAVINGS ASSOCIATION

LONE PINE BRANCH

United States Depository

SAFE DEPOSIT BOXES

ESCROWS

400 NORTH MAIN ST.  
LONE PINE, CALIFORNIA



PREPARING FOR BRANDING TIME



GLASSPAR • • AMERICAN TRAILERS

MERCURY  
OUTBOARDS  
MerCruiser

## BOB LUND'S GARAGE

361 SOUTH MAIN ST.  
BIG PINE, CALIF.

Bob Lund

Res. WE 8-2343  
Bus. WE 8-2341



Wm. S. Hoffman

General Contractor

- REMODELING
- ADDITIONS
- CABINETWORK

*For estimate  
or further  
information call*

LONE PINE TR6-4056



JOE GULLINO

Your Texaco Star

Dealer

WE 8-2235  
BIG PINE, CALIF.

## GEORGE'S *Liquor* STORE



BEER  
WINE  
LIQUOR

*"Bud" Slater - Charles Mates*

150 South Main  
LONE PINE

## LONE PINE BAKERY And COFFEE BAR

*Home Of Chuck Wagon Bread*  
COMPLETE LINE OF BAKERY PRODUCTS



*Breads*

*Cakes*

*Pies*

*Pasties*

*Cream Goodies*

*Cookies*

*Coffee Cakes*

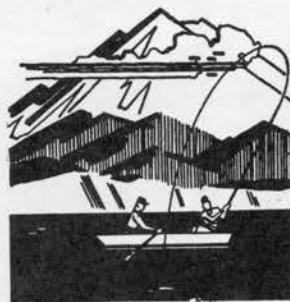
*Donuts*

*Decorated Cakes Made to Order*

131 S. Main

TR 6-4811

LONE PINE



In Lone Pine It's...

**Hopkins  
Hardware**

HARDWARE  
SPORTING GOODS  
TOYS

HUNTING & FISHING

SUPPLIES  
and LICENSES

BLOCK ICE

Coin Operated  
24-Hours

COLD STORAGE

Phone  
TR 6-2501



A GROUP OF WORKERS IN FRONT OF THE BUNK HOUSE DURING  
THE BUILDING OF THE AQUEDUCT. PHOTO TAKEN ABOUT 1913.



# LIKE WESTERN ENTERTAINMENT?

Then We Invite You And Your  
Stampede Guests To Pay Us  
A Visit.

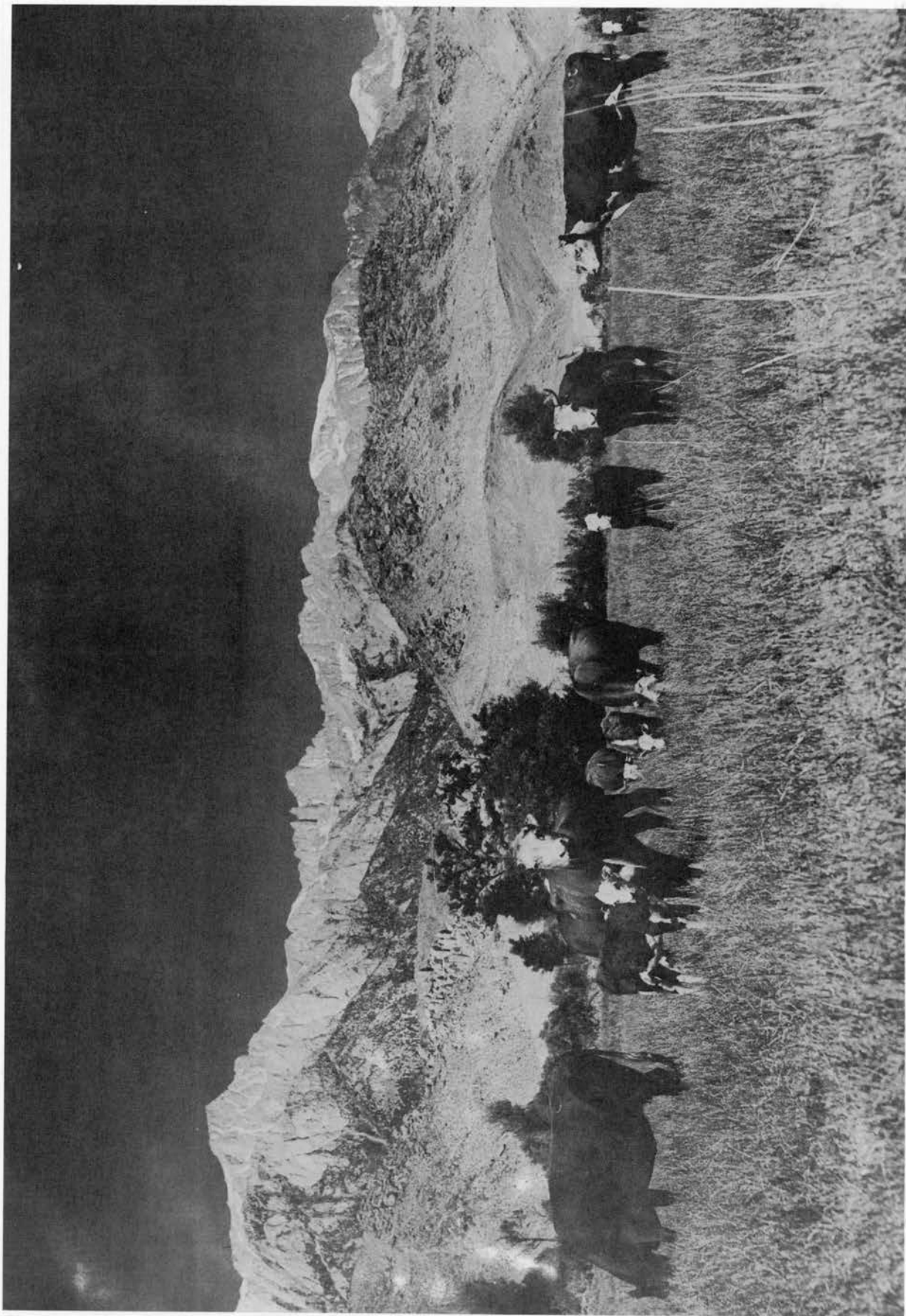
- All Popular Nevada Gaming.
- Leading Stage Attractions.
- 24-Hour Dining Service.
- Gobs Of Slots.
- Deluxe Motel Accommodations

## *E Capitan*

LODGE & CASINO

HAWTHORNE, NEVADA





A GROUP OF BEEF STOCK IN THE LUSH PASTURES IN THE EARLY DAYS  
IN OWENS VALLEY.



# Sierra Bar & Cafe Inc.

FINE CUISINE  
BREAKFAST  
LUNCH  
DINNER

Gene and Gus

413 SOUTH MAIN

Our  
Specialty  
ITALIAN  
DINNERS

STEAKS  
CHOPS  
CHICKEN

OPEN DAILY  
11 A.M.

Phone  
TR 6-8015

LONE PINE, CALIF.

# CALIFORNIA INTERSTATE TELEPHONE CO.



Salutes Lone Pine  
and her 1964  
stampede!

"Keep in touch  
by a long  
distance call."



Best Wishes  
to our Lone Pine  
friends and  
good Luck to their  
Silver Stampede

# Mc Murry's Cafe

BISHOP

# SIERRA BARBER SHOP



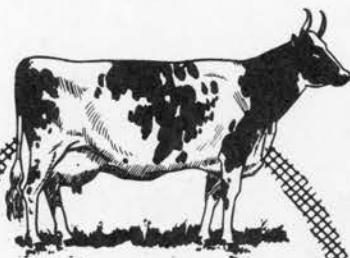
BAILEY McROBERTS  
105 WATER STREET  
LONE PINE, CALIFORNIA



Lee's

# DELICATESSEN and CAFE

LONE PINE



# Greetings

from our  
new dairy  
drive-in

# LONE PINE DAIRY

"The Schous"

TR 6-3271



Carrasco's  
RICHFIELD  
SERVICE

1202 So. Main

# TRAILER COURT

LONE PINE  
Phone TR 6-4006

Make every occasion a pleasant  
memory with gifts of distinction  
**LORENE'S**

GIFT & ROCK SHOP  
Leo and Lorene Jones

P.O. BOX 506  
235 SO. MAIN ST

LONE PINE, CALIF.

TR 6-2472

# ÷ Nogales ÷ CLUB & CAFE

# HOME COOKED MEXICAN DISHES

*Coldest Beer in Town*

Art Nogales  
Manager

107 N. MAIN ST.

TR 6-3331

÷  
Frances Ojeda  
Chief Cook  
LONE PINE



THE LATE HOOT GIBSON WITH CAST AND CREW DURING THE FILMING  
IN THE LONE PINE AREA IN THE EARLY 1920'S.



# LASKY'S RADIO & TV

SALES & SERVICE

**ZENITH**

238 N. Main

Lone Pine

Phone TR6-3031

## Why PAY RENT?

See Us

We can help you own your OWN  
beautiful, modern mobile home

New or Used

BELOW L.A. PRICES!

Ask Our Customers  
BANK OF AMERICA FINANCING

**BISHOP MOBILE HOMES**

Accessories & Service BISHOP

UPTon 2-7911

**CHEVRON**

GASOLINE  
Complete  
Lubrication

Call  
Lone Pine  
TR6-2851



Atlas Tires and Batteries  
Recapping  
Road Service - Accessories

**FEAR'S CHEVRON SERVICE**

Mr. & Mrs. Ralph Fear

Junction U. S. Hwy. 395 - U. S. Hwy. 6  
and Whitney Portal Road, Lone Pine



*Best Wishes*

*to the*

*Lone Pine  
Stampede  
Committee*

DR. AND MRS. D.L. CHRISTENSON



THE WORLD FAMOUS ALABAMA HILL WEST OF LONE PINE, LOCATION  
FOR MANY OF THE WELL REMEMBERED MOVIES INCLUDING "HOW THE  
WEST WAS WON."

# Penneys

ALWAYS FIRST QUALITY

BISHOP, CALIF.

*"Count on Penneys for quality, friendly service and complete satisfaction...three generations already have."*

COOLED BY REFRIGERATION T.V. ELECTRIC HEAT

*In the shadow of famed Mt. Whitney*

*The*  
**TRAILS MOTEL**

HEATED POOL

Hunting & Fishing Information

Miss Bartha W. Price  
Manager

MAIN ST - LONE PINE

**OWENS VALLEY ELECTRIC CO.**

*Congratulations  
on your 25th anniversary  
Stampede.*

Mr. and Mrs. Art Stringer  
227 North Main  
TR 6-2311

Jack's

**GATEWAY**

**Coffee Shops**

BAKE  
SHOP

LONE PINE, CALIFORNIA

OPEN  
24 HOURS  
A DAY



Phone  
TR 6-2241

**IVEY AUTO PARTS**

AUTO SUPPLIES & ACCESSORIES  
ORIGINAL EQUIPMENT PARTS

223 N. Main  
Lone Pine, Calif.

**Bob's**

**SPORTING GOODS  
and LIQUOR STORE**

*"We keep you in good spirits"*  
R.L. "Bob" Haskell

Phone  
TR 6-4561

220 SOUTH MAIN ST.  
LONE PINE, CALIF.

*The* **BISHOP BAKERY**

125 North Main, Bishop, Calif.

Home of the original, world famous—

**Shepherd Bread**

Now operated by—

**HOLLAND-AMERICAN BAKERY**

150 So. Main, Bishop, Calif.—Upton 2-6791

*Also sold in markets, restaurants  
and lodges, from Mair's Market in  
Independence north to Lee Vining.*



USED CARS



CADILLAC



OLDSMOBILE



CHEVROLET

*Parts,  
Sales  
and Service*



**OYLER-WILEY  
MOTORS**

462 N. MAIN  
BISHOP



FATHER CROWLEY PLAQUE



"Where the West greets the Rest"

## The RANCH MOTEL

ALL ELECTRIC HEAT  
AIR CONDITIONED

2 Blocks Off Highway  
KITCHENS AVAILABLE



Elmer and Billie Schroeder  
LONE PINE, CALIF.

P.O. Box 266  
TR 6-4306



Dale's

## CHEVRON SERVICE

STANDARD OIL PRODUCTS

plus

COMPLETE LINE OF ATLAS TIRES  
TUBES, BATTERIES & ACCESSORIES

460 S. MAIN LONE PINE TR 6-4042



## HANCOCK'S Auto Repair

Complete  
AUTOMOTIVE SERVICE

AUTOMATIC  
TRANSMISSION

WHEEL ALIGNMENT  
RADIATORS

235 N. Main  
P.O. Box 671  
LONE PINE, CALIF.

PHONE: TR 6-3601  
Day or Night

## PIONEER HARDWARE

Paints • Hardware • Sporting Goods  
Stockmen's Supplies

293 North Main ÷ Bishop, California

"Every thing for the Horseman's needs"

dealer for TEX TAN

C.P. ANDRE

UPTON 2-2031

# Sportsman Cafe

LONE PINE

Visit

- ❖ MT. WHITNEY
- ❖ ALABAMA HILLS  
via Movie Lane  
Road
- ❖ DEATH VALLEY

Unique •• Scenic •• Photogenic

## VETERANS OF FOREIGN WARS

TURNER BARNES POST  
8036 & AUXILIARY



We Have Been Around-

"From Wagon Trails To Jet Trails"

Phone TRipoli 62461  
LONE PINE, CALIF.



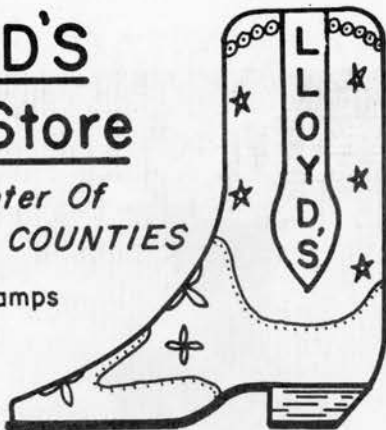
PADRE CROWLEY POINT (TO THE RIGHT WITH ROAD) ON  
HIGHWAY 190 BETWEEN LONE PINE AND PANAMINT SPRINGS

# LLOYD'S Shoe Store

*Style Center Of  
INYO-MONO COUNTIES*

S. & H. Green Stamps  
BANKAmericard

135 N Main  
LONE PINE, CALIF.



# Bob White's FLYING SERVICE

FLYING TO MONACHE AND TUNNEL MEADOWS  
FOR HUNTING AND FISHING... SINCE 1945

*Fly to...* TUNNEL AIR CAMP  
In A New Cessna 206

Where Saddle and Pack Stock Is Available for Trips to...

- ROCKY BASIN LAKES
- GOLDEN TROUT CREEK
- KERN RIVER
- ROCK CREEK

Packer and Guide Service Available

CAMPSITES • TENTS • COTS  
FOR RENT AT TUNNEL AIR CAMP, BY DAY OR WEEK

ELEVATION 9100  
ON SOUTH FORK OF KERN RIVER

LONE PINE AIRPORT

Phone TR6-2782

Lone Pine, Calif.



# the CORRAL BAR

LONE PINE, CALIF.

HISTORIC  
BACK BAR FROM THE  
GHOST TOWN OF SKIDOO

*The only bar in the world  
where you can see Mt. Whitney*

FORD    THUNDERBIRD    MERCURY

FALCON    FORD TRUCKS

YOUR  
AUTHORIZED  
DEALER

# ELLIS MOTORS

335 Main St.  
TR 6-2611

LONE PINE



Authorized Sales And Service  
SHELL PRODUCTS



- Air Conditioned
- TV In All Rooms
- Fish Frozen Free



*Your hosts -*  
"RED" and "ZEL" BUTLER... Phone TR6-2427  
305 N. Main    Lone Pine



FOSTER SMITH, GRAND MARSHALL OF 1954 STAMPEDE.







WINNER OF FLAPJACK RACE DURING THE ANNUAL '49ERS EVENT



## Wheeler's Richfield Independence

HAND POLISHED ROCK JEWELRY  
COMPLETE LAPIDARY  
SUPPLIES

ALL BRANDS OF OIL  
AND BLUE CHIP STAMP'S



### Best Wishes

to the  
LONE PINE  
STAMPEDE  
from  
INDEPENDENCE  
*Lion's Club*



Member California Land Title Association

Congratulations on a fine  
local celebration from  
the T.I. Staff.

## Title Insurance and Trust Company

224 N. EDWARDS STREET

INDEPENDENCE, CALIFORNIA

THOMAS D. STOCKTON  
Manager

## KRATER'S INSURANCE AGENCY

### ALL TYPES OF INSURANCE

LIFE	AUTO
FIRE	TRAVEL
GLASS	BURGLARY
LIABILITY	SURETY BONDS

**NOTARY PUBLIC**

**REAL ESTATE BROKER**

Alex C. Krater

TR 8-2901

149 N. Edwards St Independence, California



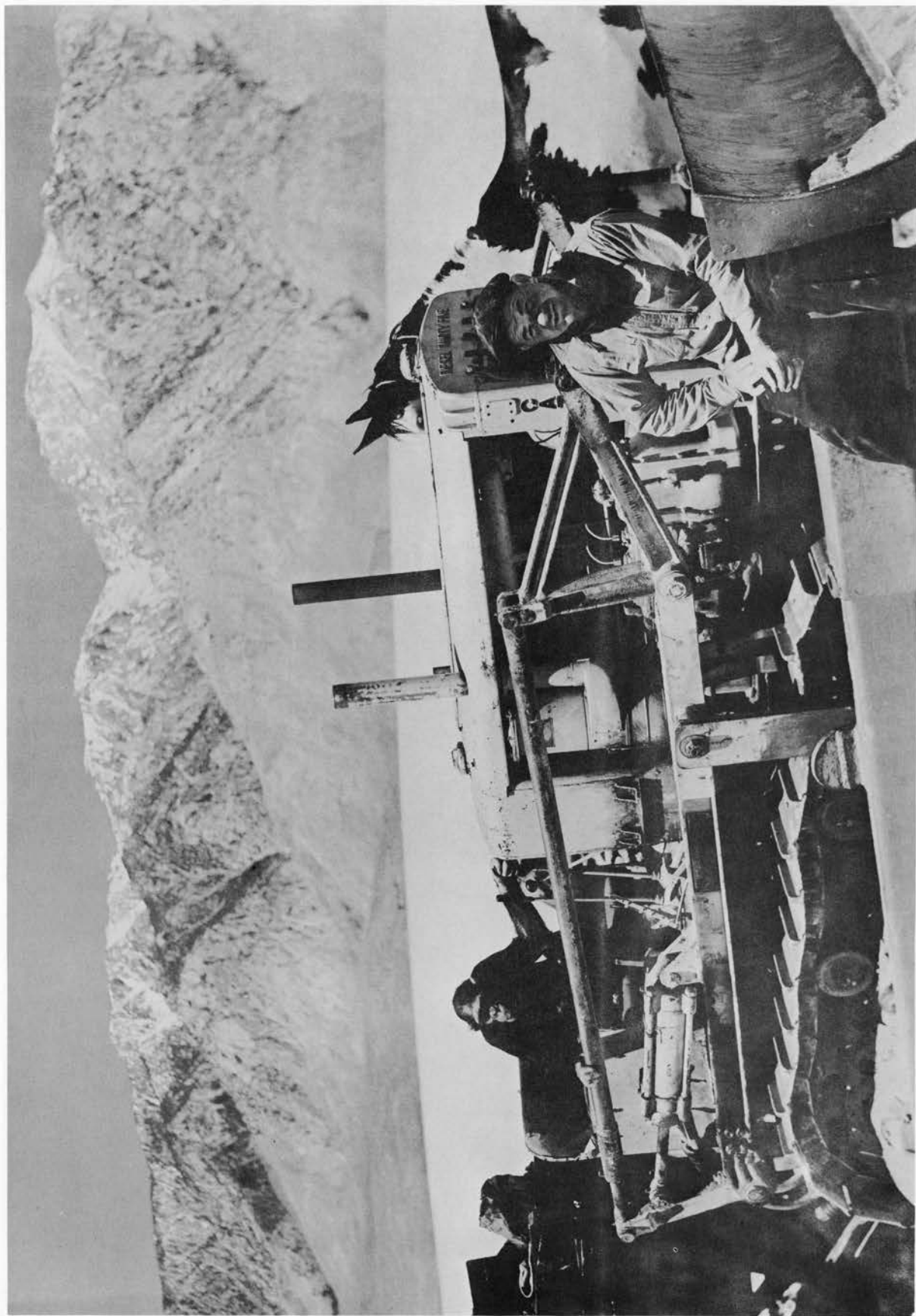
## MAIRS' MART

*and* GENERAL STORE  
INDEPENDENCE  
*Fisherman's Headquarters*

TOYS  
YARN  
MEATS  
GIFTS  
YARDAGE  
SWEATERS  
GROCERIES  
SPORTING GOODS

*The Most Complete  
Store in the Valley*





JESS McELROY, DURING THE SHOOTING OF A TARZAN SEQUENCE. THE MACHINE OPERATOR, WE ARE TOLD, BECAME TOO ADEPT AT HIS JOB AND HAD TO BE SENT TO MONKEY HEAVEN.



**Best Wishes  
to the Stampede**  
*from*

**Walter Wilson, M.D.**

**Raymond G. Auvil, M.D.**

**Winfred B. Zimmerly, M.D.**

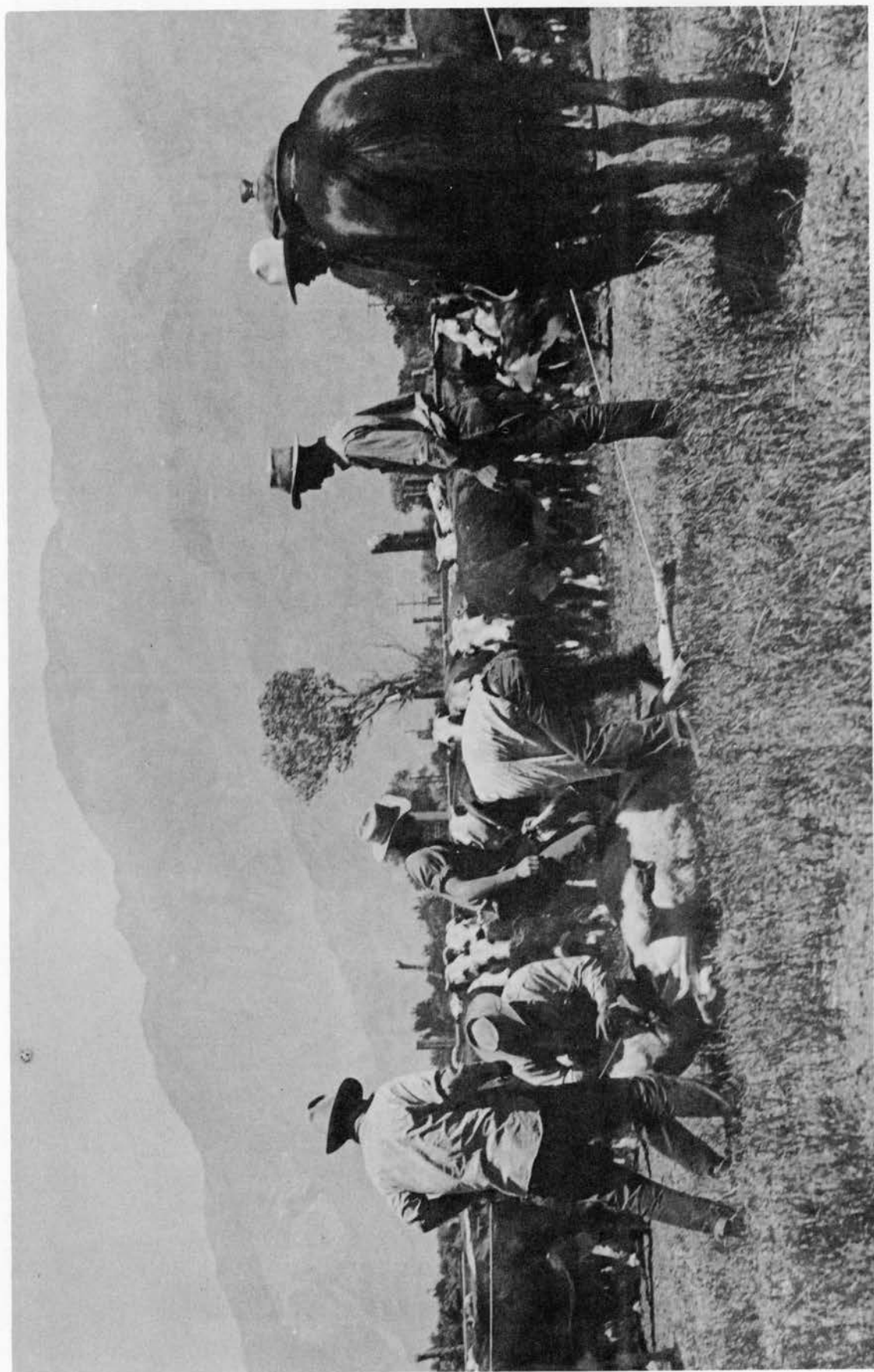
**Southern Inyo Medical Group**

**Happy  
25th Anniversary**  
*from*

**Douglass W. Dyer, D.D.S.**

**Donald F. Jacques, D.D.S.**

**Southern Inyo Dental Group**



PREPARING FOR BRANDING TIME ON THE ANCHOR RANCH  
AT LONE PINE

# C.P.S.

*Music and Variety*



INSTRUMENTS BOOKS  
GIFTS NOVELTIES  
SOUVENIRS



BOX 437 -- 132 N. MAIN STREET  
LONE PINE, CALIFORNIA



## SUBURBAN GAS

OF LONE PINE

800 S. MAIN ST.  
LONE PINE, CALIF.

Phone TR6-3201



WESTERN WEAR FOR ALL THE FAMILY

*at*  
**THE TOGGERY**  
115 N. MAIN BISHOP  
*featuring*

HYER, JUSTIN, ACME BOOTS-STETSON,  
RESISTALL, U-ROLL-IT HATS  
H-BAR-C SHIRTS, PANTS, JACKETS

**SUCCESS TO YOUR RODEO**

SUPPORT OUR ANNUAL TRI-COUNTY  
FAIR



## WELCOME VISITORS!

to the  
**LONE PINE  
STAMPEDE**

*Southern Inyo  
Chamber of Commerce*

# Welcome

To Lone Pine  
And Western Days Celebration!

SEE OUR COMPLETE  
LINE OF NAME BRANDS  
WESTERN WEAR  
FOR THE ENTIRE FAMILY

Stetson PENDLETON  
LEVI  
Lee WRANGLER  
ACME BOOTS

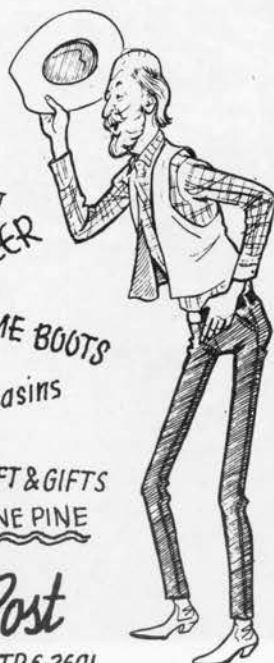
*Ship and Shore*  
Guild and Minnetonka Moccasins  
AUTHENTIC INDIAN CRAFT & GIFTS

OUR 18th YEAR IN LONE PINE

INDIAN

## Trading Post

Main and Pine TR6-3691



## MILLER'S CHEVROLET

LONE PINE

**AUTHORIZED SALES & SERVICE**

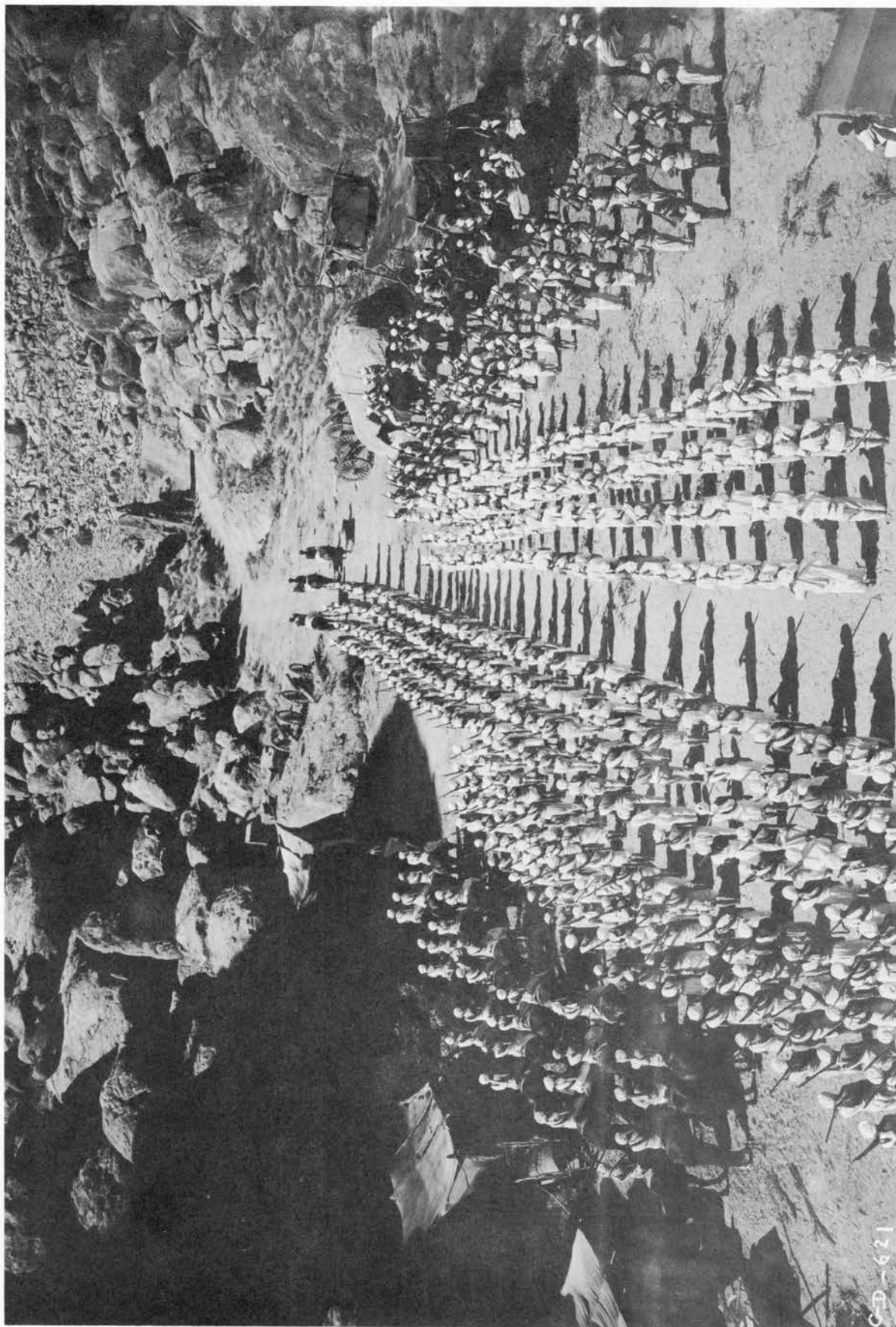
**CHEVROLET**  
CARS & TRUCKS

**CORVAIR**  
By CHEVROLET



**Complete Auto and Truck Service  
Facilities ..... Body, Radiator and  
Engine Repairing.... Auto Painting  
Towing Service**

330 NORTH MAIN · LONE PINE, CALIFORNIA



PART OF THE CAST DURING ONE OF THE SCENES FROM GUNGA DIN,  
FILMED IN THE ALABAMA HILLS AT LONE PINE 1938.

C-D-621



Compliments of  
**HENRY F. GERFEN**  
REALTY

380 N. MAIN ST. • BISHOP • UP 3-3332

# BRISTLECONE

*Motel*

BIG PINE, CALIFORNIA

*Souvenirs*



## SEQUOIA-KINGS PACK TRAINS

Shepherd Pass  
Kearsarge Pass  
Sawmill Pass  
Taboose Pass

Box 176  
INDEPENDENCE  
CALIFORNIA

*Fishing Camping Scenery*



**O.K. Kelley  
Service**



COMPLETE  
AUTOMOTIVE  
SERVICE

24-HOUR TOWING  
ROAD SERVICE

634 So. Edwards  
INDEPENDENCE, CALIF.

Phone TR 8-2611

THE  
**Copper Kettle**  
COFFEE SHOP

KITTIE LEE INN

524 N. Main-BISHOP

CHARLIE'S ROOM

*Cocktails*

Upton 3-3556

PRESCRIPTION  
SPECIALISTS

## OWENS VALLEY DRUG CO.

112 SOUTH MAIN ST.

BISHOP, CALIFORNIA

GREETING CARDS  
COSMETICS  
GIFTS

SICKROOM SUPPLIES  
PRESCRIPTIONS  
DRUGS

Upton 2-2901

INYO - MONO Coca-Cola  
Bottling Company



Distributors For Lucky Lager  
BEER

387 Hammond St.

Upton 2-2021

Bishop

## EASTERN SIERRA CO.

250 S. MAIN ST. BISHOP, CALIFORNIA  
UPTON 2-2011

Distributor For  
HIRAM WALKER • JIM BEAM

OLYMPIA • COORS  
& FALSTAFF BEERS

I.S.C. & PETRI WINES

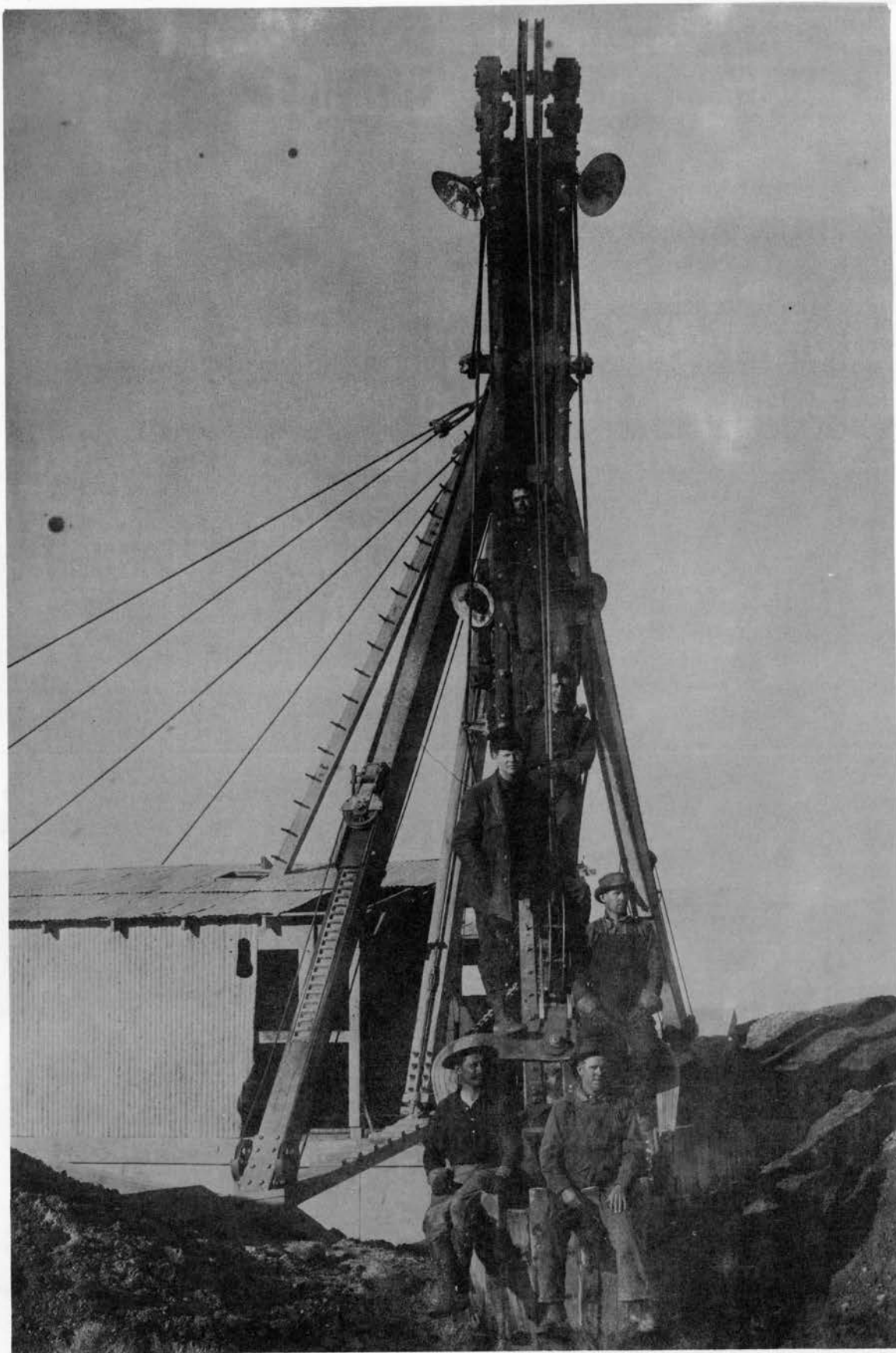
For  
TYPEWRITERS  
ADDING MACHINES  
and  
CASH REGISTERS

SOLD,  
REPAIRED  
and  
EXCHANGED

Call  
**Hank DeYoung  
Enterprises**

UP 2-6361

136 W. Line, BISHOP



AN AQUEDUCT CONSTRUCTION CREW

Compliments of

Dr. O.W. Rysse  
CHIROPRACTOR

Lone Pine, Calif.

Owens Valley  
**LAUNDROMAT**

Box 175  
LONE PINE, CALIF.



TIRES  
TUBES

**BURKHARDT'S**  
**UNION SERVICE STATION**

MAIN & POST

LONE PINE

**Union 76 Tires**

Firestone Products

BATTERIES  
ACCESSORIES



**MI-LADY'S DRESS SHOP**

*and SMALL FRY*

Women's and Children's Apparel

121 N. MAIN

LONE PINE

Phone TR6-3576



Chuck and Eva Whitney, Operators  
Phone TR6-4661 or TR6-2281

QUIET  
COMFORTABLE  
OFF HIGHWAY

1 R 6-3231  
BOX 568

**Timberline  
Motel**



215 E. POST  
LONE PINE  
Turn at Union Station  
1/2 Block East

BETTY & JOHNNY HELMER

EDWARD C. JACOBY

PUBLIC ACCOUNTANT

P.O. Box 52

LONE PINE, CALIF.

TRinity  
6-2081

**R.F. OYLER**  
**INSURANCE**

INSURANCE DESIGNED FOR  
PROTECTION - ENGINEERED  
FOR ECONOMY

**REAL ESTATE BROKER**

120 N. MAIN

LONE PINE, CALIF.

**ECONOMY  
MOTOR PARTS, INC.**

AUTO PARTS,  
GLASS and  
SERVICE

**JOB-PROVED**  
**Jeep**  
VEHICLES



Route 1, Box 26  
So. Main St.  
UP2-6581  
BISHOP,  
CALIF.

Chuck Perry

Jim Clark



FLOATING DREDGE USED IN AQUEDUCT CONSTRUCTION



OUR BUSINESS IS TO KEEP YOU IN GOOD SPIRITS

## SIERRA *Liquor Store*

ICE CUBES  
LIQUORS AT  
L.A. PRICES

137 N. Main BISHOP

UPton 2-4871

## RAINBOW

COCKTAILS  
COORS ON TAP  
Bishop, Calif.



BREAKFAST • LUNCH • DINNER

## Walt's Kitchen

*Home Cooked Food Is Our Specialty*  
281 N. MAIN • BISHOP, CALIFORNIA

BEER  
POOL  
CARDS  
EATS



## VALLEY CLUB & CAFE

*Amusement Center*

BISHOP, CALIF.

## Buck's Store

UPTon 3-3939

- SHOES FOR THE ENTIRE FAMILY
  - MEN'S AND BOY'S WEAR
- 275 N. Main • BISHOP, CALIF.  
Lester E. Buck, Owner

## Ray's Den Motel

K.F. RANDOLPH, Prop.

phone  
TR 8-2597

AIR CONDITIONED  
PANEL-RAY HEAT  
405 N. EDWARDS  
INDEPENDENCE, CALIF.

## SIERRA CHALET DINER

Across From The  
Lone Pine Roadside Park

A Complete and Modern FROSTY FREEZE  
500 N. Main Lone Pine

## PINES CAFE

104 SOUTH EDWARDS  
INDEPENDENCE, CALIF.

Dining Room • Cocktail Lounge

TR 82-1466



## Jim Nikolaus

## GLACIER SERVICE

ON U.S. 395 & 6  
AT INTERSECTION OF GLACIER  
LODGE ROAD



BIG  
PINE  
CALIF.



220 No. Main  
LONE PINE  
Phone TR 6-2766

# ROGERS MARKET

QUALITY MEATS

GROCERIES

PRODUCE

BEER - WINE  
& SUNDRIES

203 NORTH MAIN

LONE PINE, CALIFORNIA



## ROSSI'S

CAFE AND  
TAVERN

LONE PINE

*featuring*

BROASTED CHICKEN

Breakfast · Lunch · Dinner



*Best Wishes to  
the Lone Pine Stampede*

**DON H. TERRY**

Distributor

STANDARD OIL  
PRODUCTS



TR 6-2901  
LONE PINE

## GEORGE'S *Liquor* STORE



BEER  
WINE  
LIQUOR

*"Bud" Slater - Charles Mates*

150 South Main  
LONE PINE

*Prescription  
Service*



## LONE PINE DRUG STORE

Margaret & Ben Baker

24-HOUR EMERGENCY SERVICE

*Phone TR 6-2321*

Welcome To A Western  
Celebration- THE STAMPEDE

480 S. Main

Lone Pine

## *Off the Highway!*

LONE PINE, CALIFORNIA



*"At the Foot of Mt. Whitney"*

## FIRST CHOICE!



- ✓ DELUXE ACCOMMODATIONS
- ✓ 1/2-BLOCK WEST OF HIGHWAY
- ✓ SINGLES - DOUBLES - KITCHEN APTS.
- ✓ TELEVISION, HI - FI
- ✓ COURTESY COFFEE IN ROOMS



*Phone TR 6-4711*

ROY AND MILDRED OLSON  
OWNERS-OPERATORS  
P.O. Box 55 - LONE PINE

"EVERY SERVICE FOR THE TOURIST AND SPORTSMAN"

\* \* S U C C E S S \* \* \*

\* \* L O N E P I N E S T A M P E D E ! !

from MERCHANTS and FRIENDS of SOUTHERN INYO COUNTY:

CARTAGO	Mason Trucking Company Jack Heinen Enterprises Jim Riley's Richfield Service Station & Garage Mr. & Mrs. Ed Diehl's La Casa Cartago Rest Home Bill Thornburgh's Cabin Bar Ranch Hazel's Cabin Cafe
OLANCHA	Mark Lacy & Son Ranch Reeve's Shell Service Station Castner's Texaco Service Ranch House Cafe & Cottonwood Pack Station Bob & Gerry Galloway's Market Terry & Hazel West's Mobil Service Station George DuFault's Chevron Station & Owens Lake Garage George Brown Ranch William Cook's Hancock Service Station Frank & Ann Rose's Airflight Cafe Chris Carstensen's 76 Union Station J.G. Grant Motel Larry Schulz's Rustic Motel Sally Smith's Snow Pack Cafe The Mellard Ranch The Butterworth Ranch
DUNMOVIN	Nelson's White Mountain Cafe
GILL'S OASIS	Ray & Marge's Cafe & 76 Union Station
LITTLE LAKE	Earl Sullivan's Chevron Station & June's Snack Bar Burkhart's Kennedy Meadows Pack Trains
HORNBECK	C. Hornbeck's Rock Shop Florence & Johnson Richfield Service Station
BRADY	Brady's Cafe & Mobil Service Station

MARGARET M BAKER  
BOX 7  
650 SCHOOL ST  
LONE PINE, CA 93545

