

Price 15¢



TENTH ANNUAL  
*Lone Pine*  
**STAMPEDE**

Program and Souvenir Book

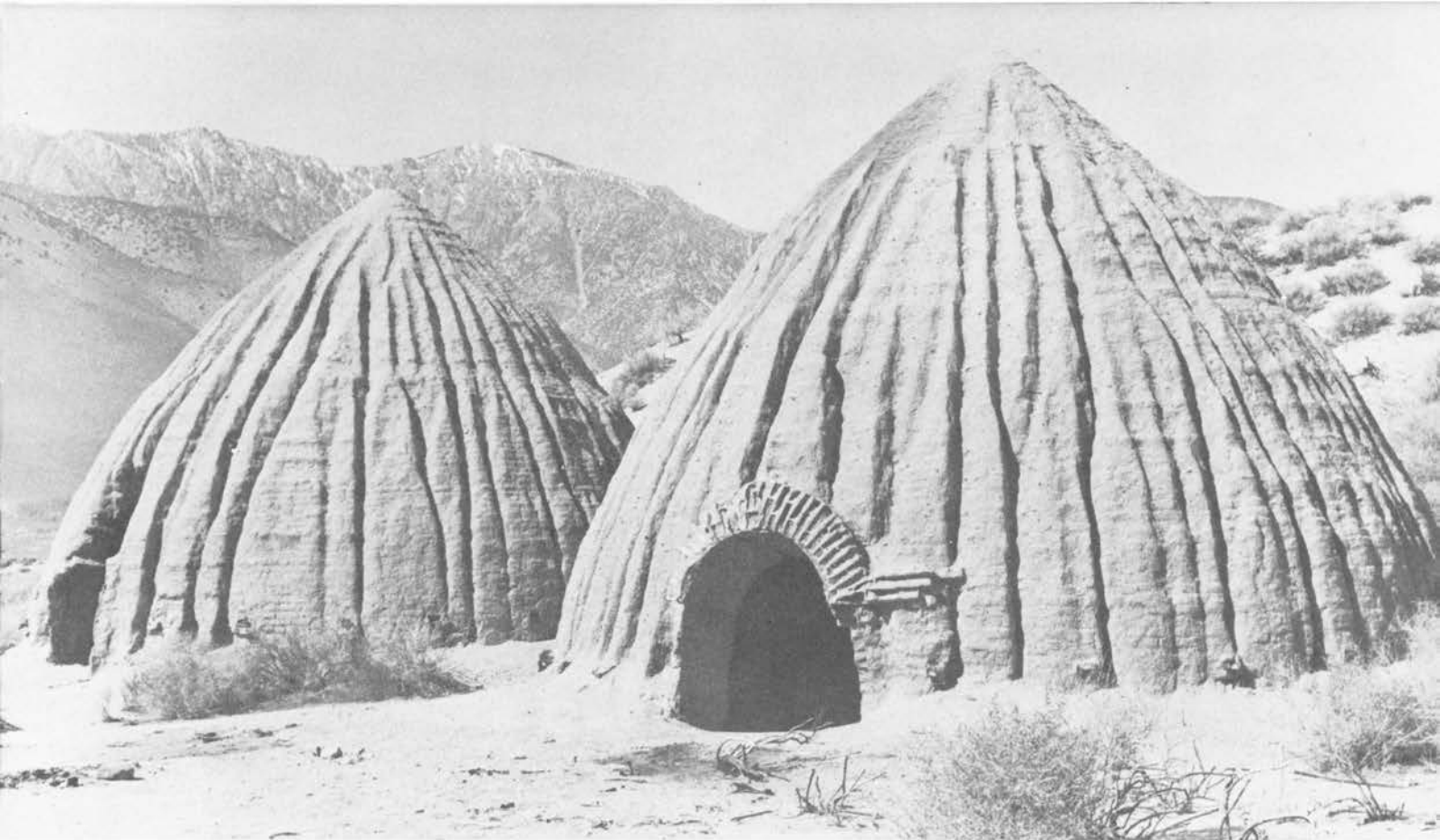
May 4-5-6, 1951



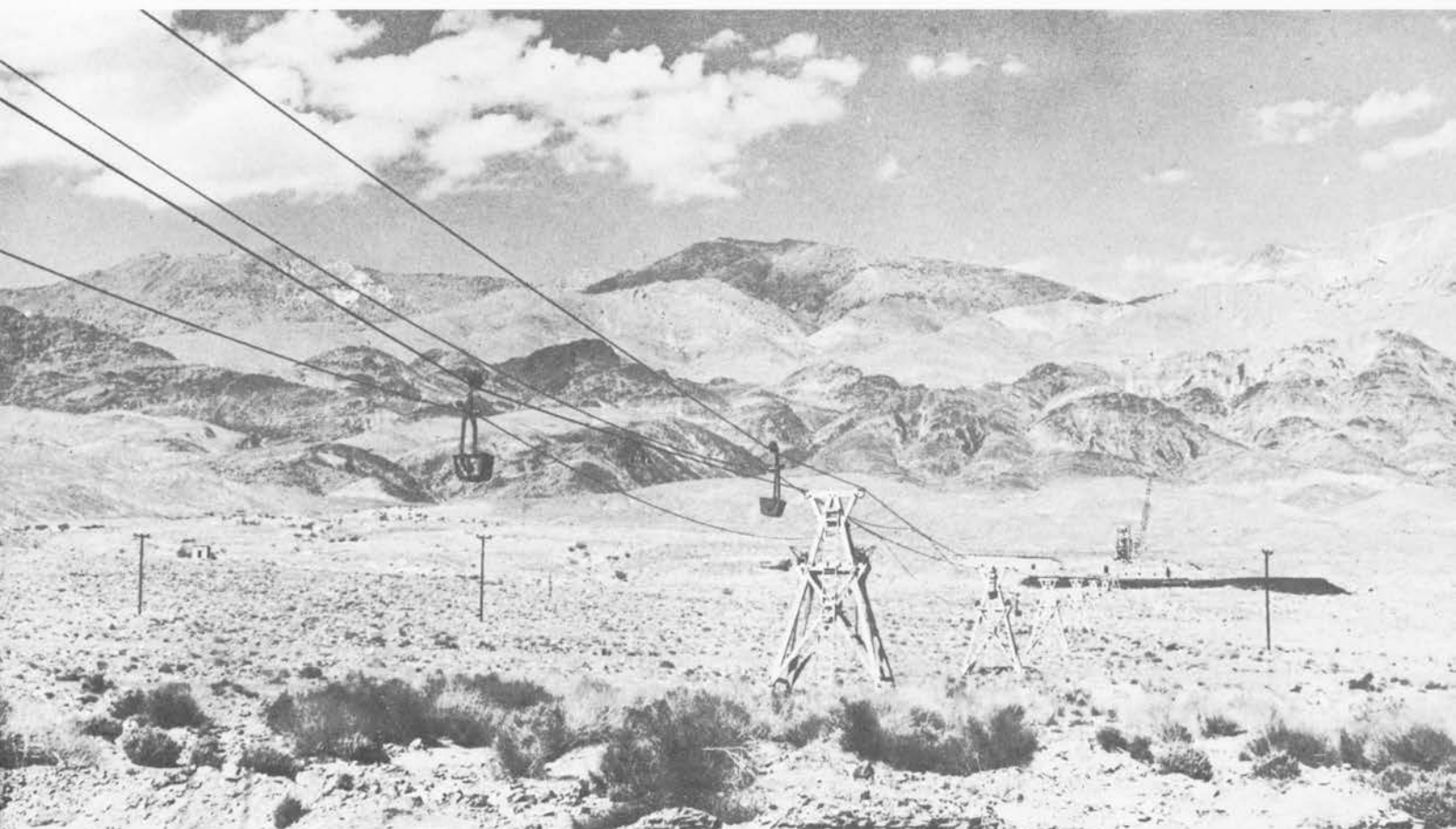
Nation's Loftiest Peak — Mt. Whitney — Seen through the Alabamas

Bob Gillis Photo

Page Sponsor: **CARL'S SIERRA CAFE AND COCKTAIL LOUNGE**



Shades of the past — Old Cerro Gordo charcoal kilns



Cerro Gordo Tramway at Keeler

Page Sponsors: J. W. COPELAND YARDS • INDIAN TRADING POST  
LUCKY LAGER DISTRIBUTING COMPANY • SOUTHERN INYO MEDICAL GROUP



# Lone Pine Churches



Trinity Memorial Church



Santa Rosa Catholic Church

Bob Gillis Photos



Assembly of God Church



Church of the Nazarene

Page Sponsors: FRANK'S TEXACO STATION • SCHROEDER'S TRAILER COURT • HALE'S WELDING SHOP  
 BON-WAY BEAUTY AND GIFT SHOP • LONE PINE CLEANERS • WELLS CARGO • EVE BLANDING  
 BILL'S FLOWER SHOP • TATUM'S LAUNDRY • CROSSON'S PLACE (Darwin) • LONE PINE TRANSFER  
 VALLEY BARBER SHOP • LONE PINE BAKERY • R. V. MCCAIN, SHELL DISTRIBUTOR

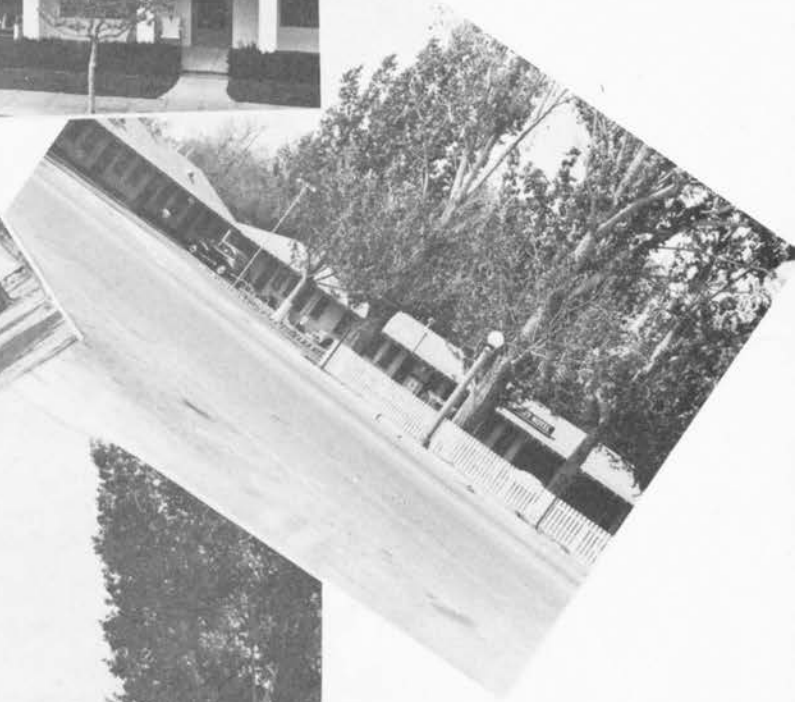


Photo Courtesy Los Angeles Times

The Winding Trail Leads to Excellent Hunting and Fishing

Page Sponsors: **CORRAL BAR AND CAFE** • **SPANISH GARDEN**

## Excellent Accomodations at Lone Pine



Top: Dow Hotel; middle left, Mt. View Motel; middle right, Mt. Whitney Motel; lower, Frontier Motel





Mule team at Keeler many years ago

# Rodeo Events

## BRAHMA BULL RIDING

Eight seconds allowed for ride before signal is given by timer. Riding must be done with one hand and loose rope. No knots or hitches to prevent rope from falling off bull when rider leaves him. Rope must have bell under bull's belly. Riders knocked off at chute, or if bull falls, are entitled to a re-ride at judges' discretion. If rope breaks, contestant is entitled to re-ride on same bull. Rider is disqualified if bucked off, not ready when called, touches animal with free hand, or uses sharp spurs.

## BAREBACK BRONC RIDING

Broncs are ridden without saddles; one hand rigging is used. Judges decide on all rigging. Horses are numbered and drawn. Eight seconds is allowed for ride before signal is given by timer. Riders knocked off at chute, or whose horse falls at chute, are entitled to re-ride at judges' discretion.

## CALF ROPING

Time starts when calf passes barrier. Two loops are allowed and calf may be caught in any manner, providing rope goes over the head first. Contestant may adjust rope and reins in a manner that will prevent horse from dragging calf. Rope may be dallied or tied hard and fast. Contestant must dismount, go down rope and throw calf, then cross and tie any three feet. If calf is down when roper reaches it, the calf must be let up and thrown by hand. Tie must hold until passed by judges and roper must not touch calf after giving finish signal. Ten seconds penalty for beating or breaking barrier.

## SADDLE BRONC RIDING

Riding is done with plain halter, one rein and saddle. Riding rein and hand must be on same side. After horse leaves starting place, horse must be spurred first jump out, high in the shoulders, and rider must continue to spur throughout ride. Credit is given for spurring over point of shoulders. Ten seconds is allowed each rider from time horse leaves chute. Ride is completed when signal is given. Rider may not change hands on rein, wrap rein around hand, pull leather or lose stirrup.

## BULLDOGGING

Steer must be caught from horse, brought to a stop and twisted down. If steer is accidentally knocked down before being brought to a stop or is thrown by the bulldogger by putting the animal's horns into the ground, it must be let up on all four feet and then thrown. Steer is considered down only when it is lying flat on its side, all four feet and head straight. Each bulldogger has a "hazer," who attempts to keep steer running straight ahead. Ten second penalty for breaking barrier.

## TEAM ROPING

Time starts when steer crosses barrier. One roper must first catch head, half head or horns of steer, and the other must catch both or one hind foot. Each is allowed two loops. If animal falls before second rope is on hind feet, he must be permitted to regain his footing. Both ropes must be on the steer and horses. Catching by head and one front foot disqualifies team.

## INYO-MONO BRAND OWNERS STEER STOPPING

Inyo-Mono brand owners gather annually at Lone Pine in friendly rivalry for special awards in the steer stopping contest. They say it's a big tougher in front of a crowd than down in the home corral. Time starts when steer crosses barrier. Contestant is allowed only one loop; steer must be caught by the head.

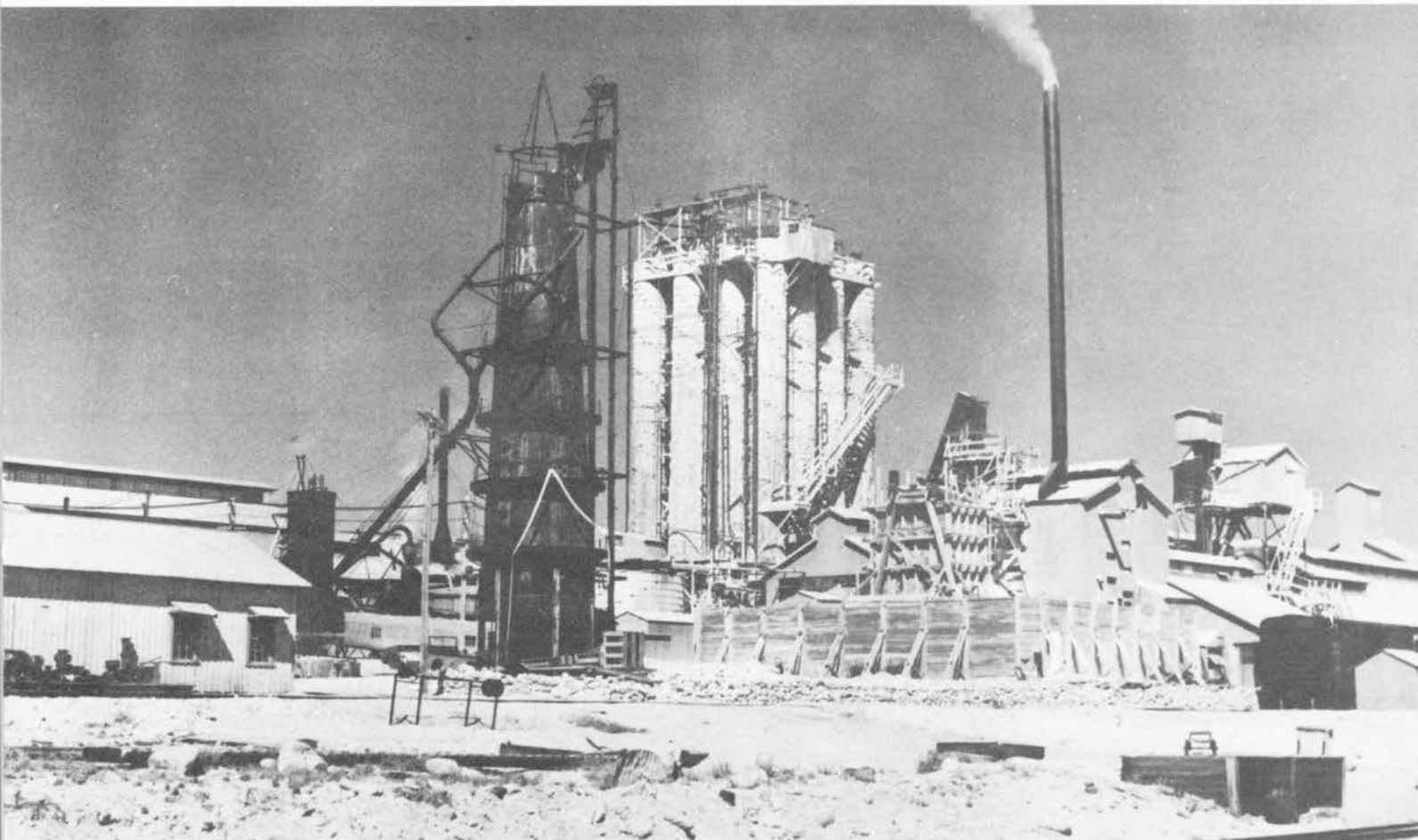
## INYO-MONO CUTTING HORSE CONTEST

Horses to be worked two minutes. Horses are judged on performance only. No choke ropes, ties or wires around horse's neck permitted. Horse must be ridden with a bridle or hackamore. Breast collars may be used, but rider must keep hands free. Chaps and spurs may be worn, but quirt or bat must not be carried. Contestant rides into herd and cuts out any cow he chooses to work. He is allowed a "cutback" man to keep cow from going to far end of arena. The more the horse works the cow of his own free will the higher will be his marking. Horse should work with a loose rein and every time rider picks up on horse's head he will be penalized.





Natural Soda Products Co. Soda Ash Plant, Keeler



Pittsburgh Plate Glass Co. Soda Ash Plant, Bartlett

Page Sponsors: **NATURAL SODA PRODUCTS CO.** • **LONE PINE CAFE** • **PITTSBURGH PLATE GLASS CO.**  
**EARL TERRY, STANDARD OIL DISTRIBUTOR**

## Several Lone Pine Homes



Bob Gillis Photo



Bob Gillis Photo

## Lone Pine's Hospital



Southern Inyo Hospital at Lone Pine

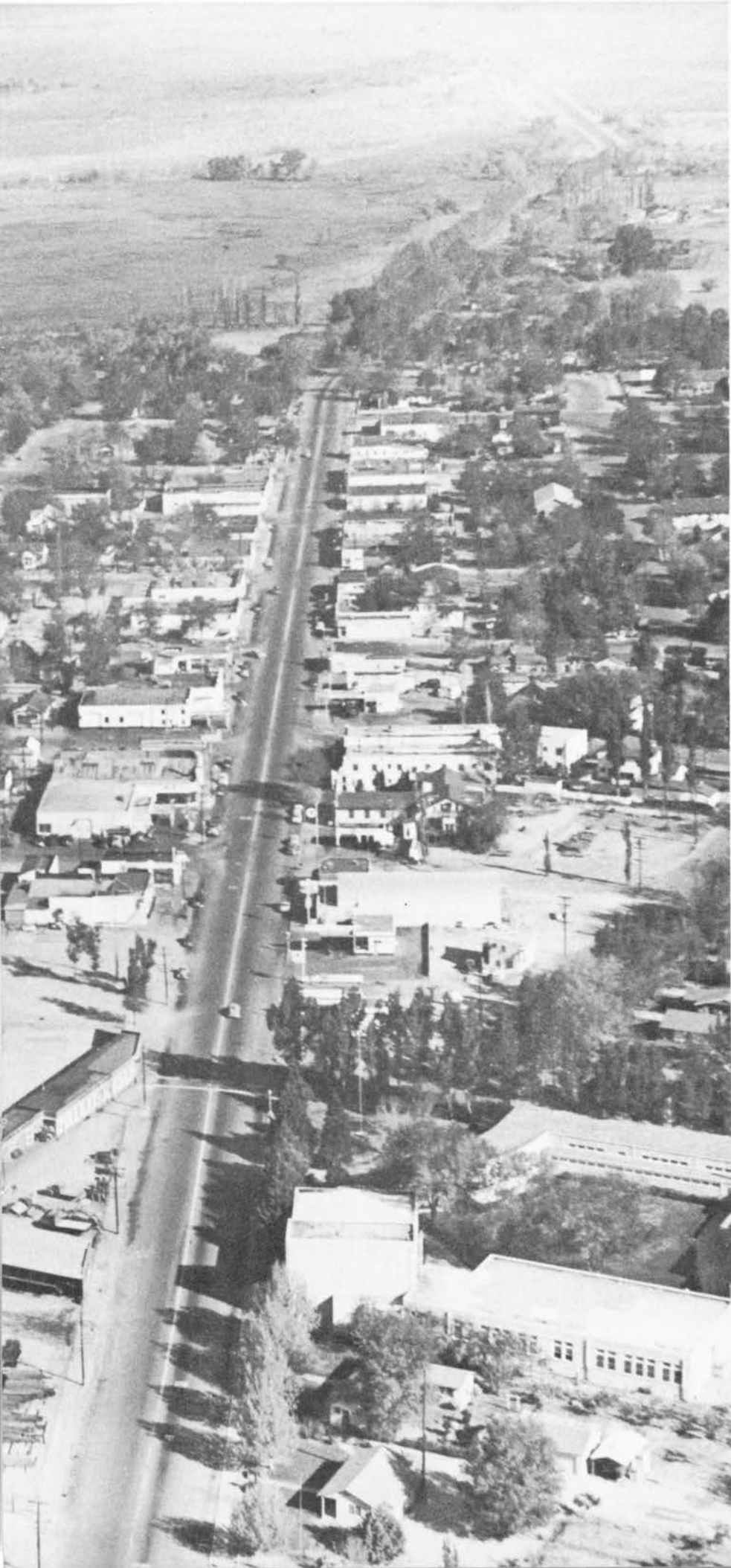


New Settling Basin — Lone Pine Domestic Water Supply — On Lone Pine Creek

Page Sponsors: MT. WHITNEY MOTEL • EDNA'S CAFE • NOGALES CLUB & CAFE  
SPITZNAGLE "Nothing but Insurance" • WHITNEY THEATER







## *Lone Pine Stampede, Inc.*

Jack B. Hopkins, Pres.  
Ben Baker, Vice-Pres.  
Walter Jones, Exec. Sec.-Treas.  
Mrs. E. H. "Ted" Cook, Sec.

### **TRUSTEES**

Russell Spainhower  
Frank Chrysler  
Otto "Slim" Honerlah  
Fred Reynolds  
E. H. "Ted" Cook  
Henry Olivas  
C. D. Ruiz

### **COMMITTEE MEMBERS**

S. C. "Dinty" Moore  
John A. Lubken  
Howard Miller  
Harry J. Lee  
Bob Rutherford  
John Morris  
Harold "Skinny" Gates

*Air View of Lone Pine,  
looking north along Main Street*

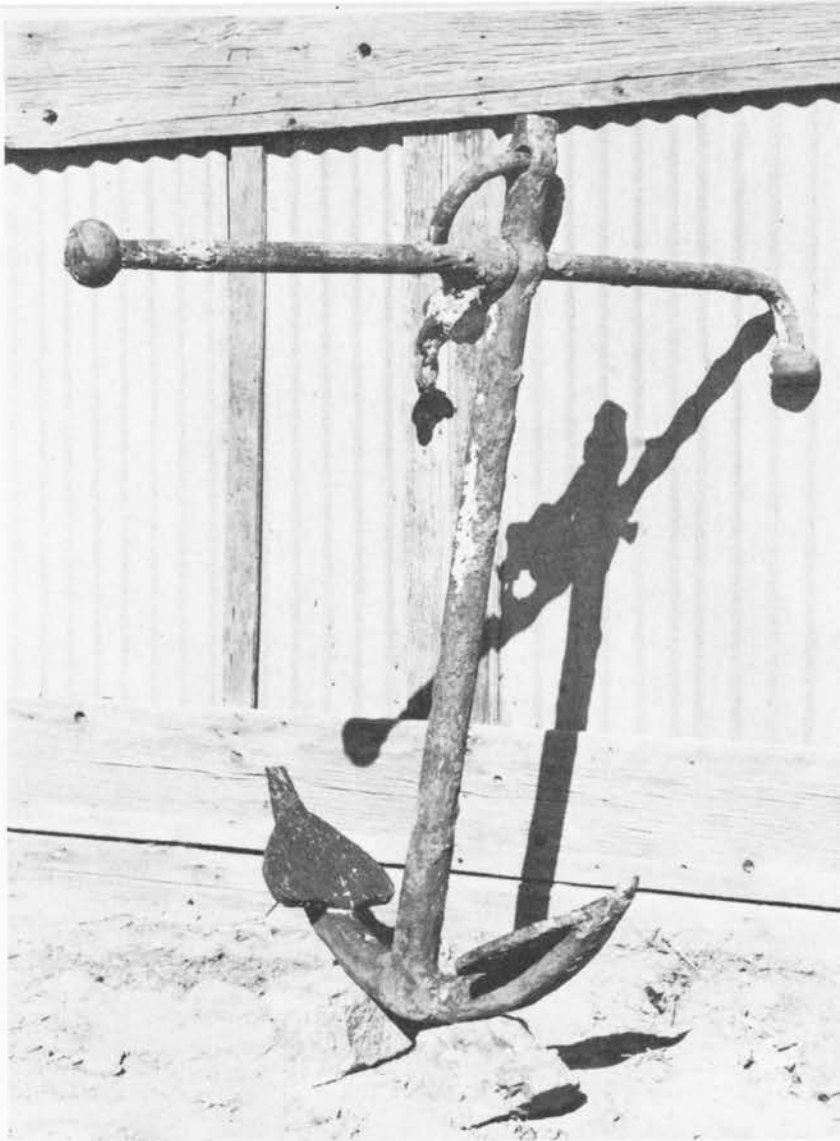
Page Sponsors: JOSEPHS • YOUNG'S MARKETS

Bob Gillis Photo

## *A Relic*

### FAR FROM OCEAN LANES

The ship's anchor, right, a type in common use 50 to 100 years ago, was dug from the bottom of dry Owens lake recently. Old timers say it very well could have been from the Bessie Brady or the Molly Stevens, the two clamshell bottom, ferry-type boats that transported Cerro Gordo silver across the lake about 1870. It stands 4 feet 9 inches high, has spade points three feet apart and spread of the top arm is four and a half feet. The chain ring is 10 inches in diameter and chain links measure two and a half inches in length. The spades are 9 inches wide by 12 long.



Sierra Talc Co. Mill at Keeler





Mt. Whitney Fish Hatchery, Independence

Page Sponsors: MAIRS' MARKET • WINNEDUMA HOTEL • ALEX KRATER, INSURANCE  
AUSTIN'S PHARMACY • KERN WHOLESALE • TITLE INSURANCE & TRUST CO.



Tree grown around ram's head — Found in Inyo Mountains by Harold "Skinny" Gates

Page Sponsors: DR. DOUGLASS W. DYER • G & G MALT SHOP • THE B's LIQUOR STORE  
GOLDEN NUGGET CAFE & BAR • MT. WHITNEY PACK TRAINS





Air View of Anaconda Darwin Mines

Page Sponsors: ANACONDA COPPER MINING CO., DARWIN  
YOU STRIKE IT RICH WITH GOLDEN STATE PRODUCTS



10th ANNUAL LONE PINE STAMPEDE  
*Program of Events*  
MAY 4 - 5 - 6, 1951

**MAY 4**

4 p.m. — Burro Races    Main Street between Bush and Willow Streets

8 p.m. — Street Dance    Main Street between Bush and Willow Streets

10 p.m. — Coronation of Stampede Queen

Whiskerino Contest awards will be made at Street Dance

All Day — Kangaroo Court

**MAY 5**

10 a.m. — Parade    Main Street

1:30 p.m. — Grand Entry at Rodeo Grounds

2 p.m. — R.C.A. Approved Professional Rodeo

9 p.m. — Stampede Dance    High School Gymnasium

**MAY 6**

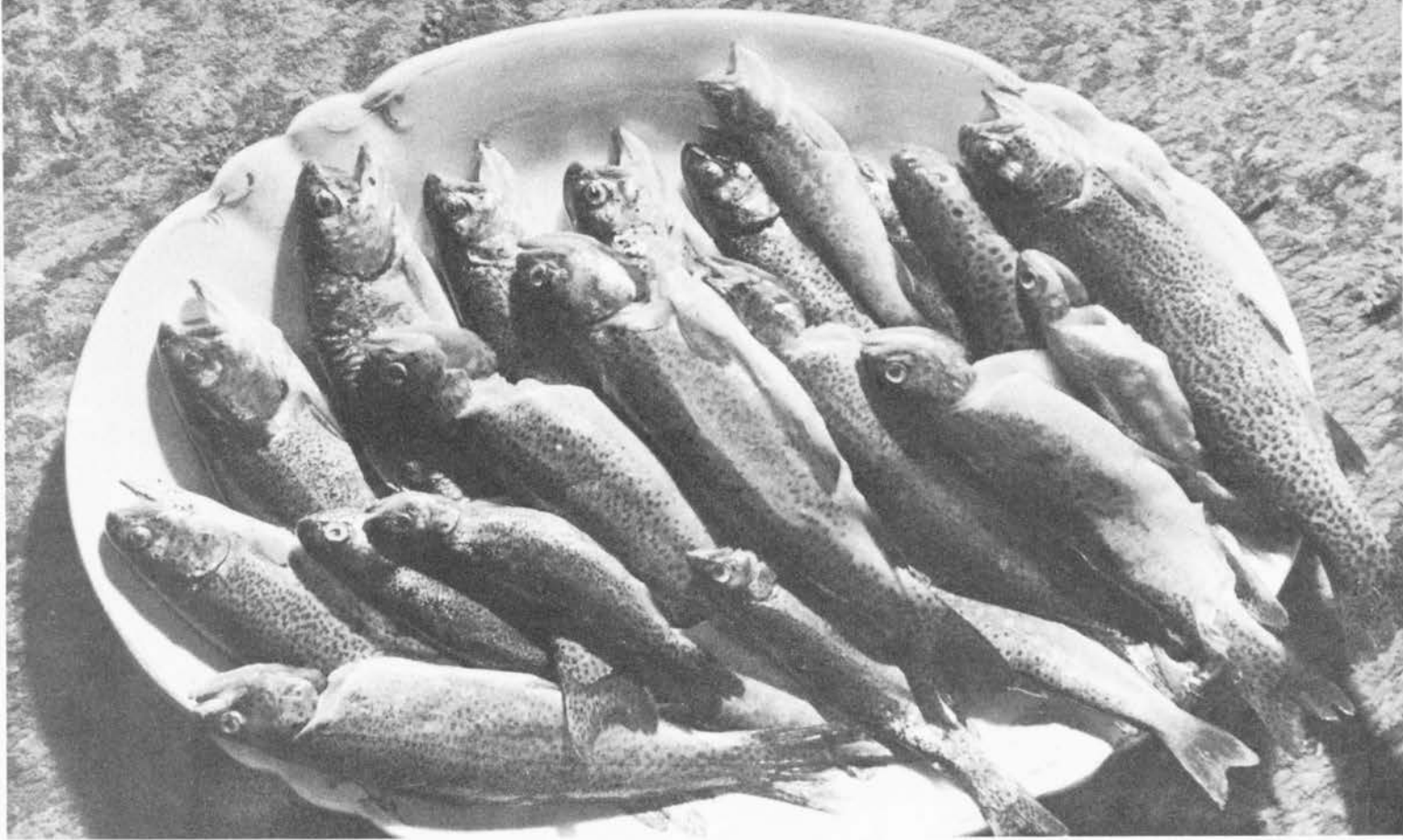
2 p.m. — R.C.A. Approved Professional Rodeo



Lone Pine from the air — Looking West

Page Sponsors: DOW HOTEL • HENDERSON'S INSURANCE

Bob Gillis Photo



Many Inyo-Mono streams and lakes produce beauties like these

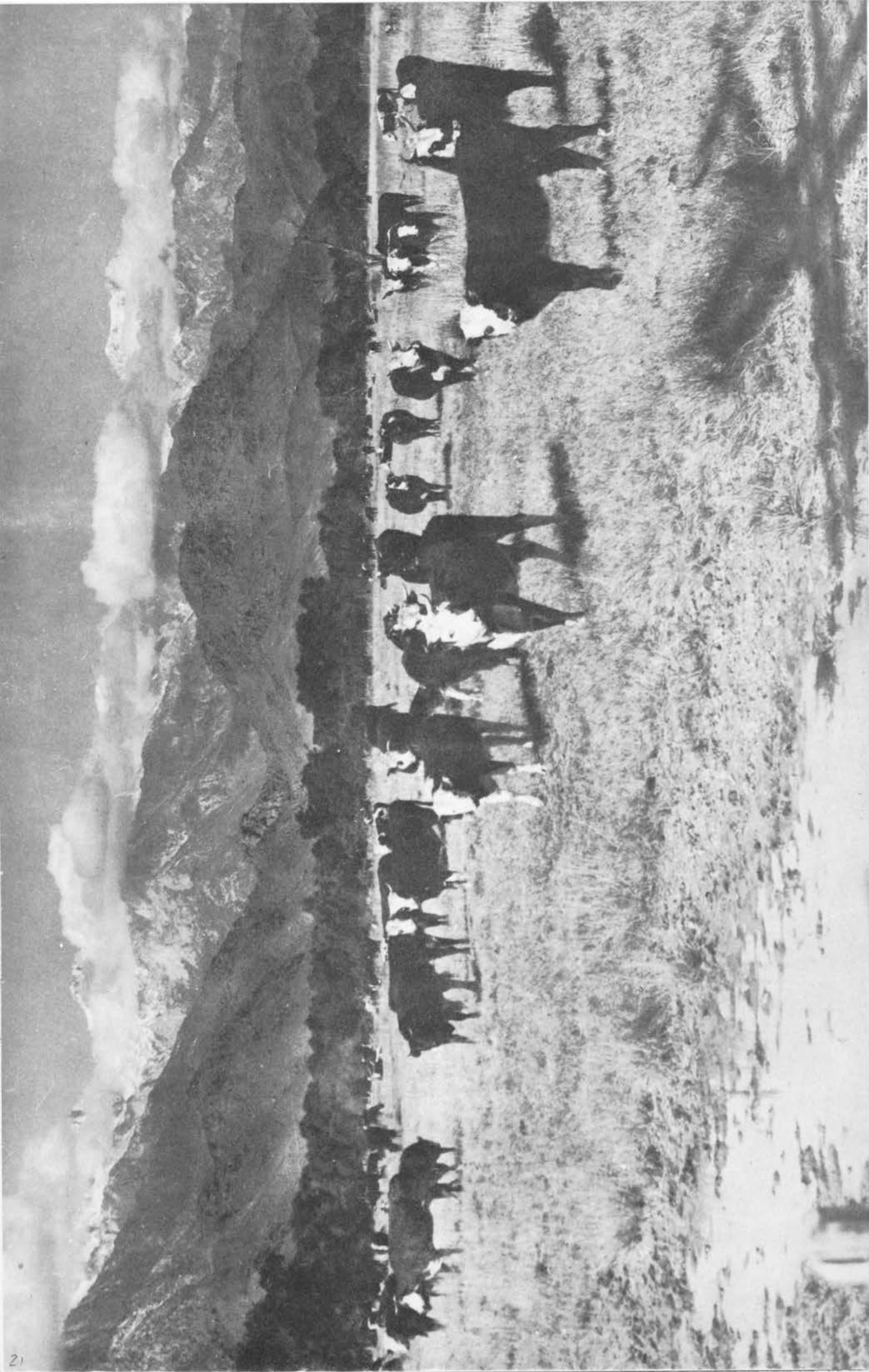


A High Sierra Lake — just one of hundreds

Photo Courtesy Los Angeles Times

Page Sponsors: **KENNETH G. IRONS AGENCY, INC.** • **BISHOP CLEANERS**  
**GREENWOOD STUDEBAKER** • **INYO COCO COLA BOTTLING CO.**



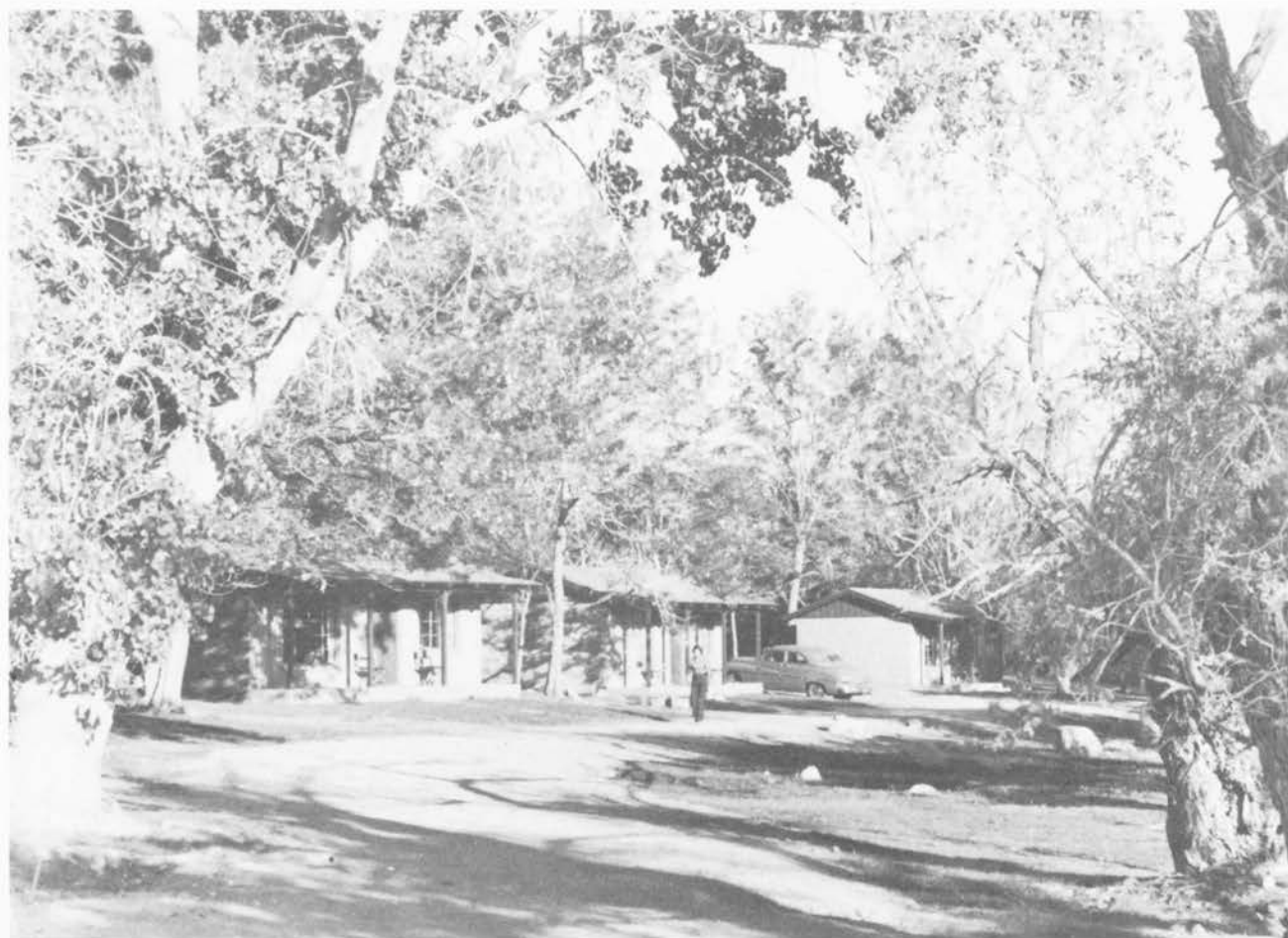


Cattle Raising is a major industry in Inyo and Mono counties

Page Sponsors: HERRON'S SPORTING EQUIPMENT • BISHOP AUTO SALES • BISHOP HARDWARE • PHELPS MOTOR CO.  
 BISHOP AUTO COURT • BISHOP HOME FURNISHINGS • McMURRY'S CORNER • BEACON TAVERN • LES' CAFE  
 PERRY PONTIAC • MEADOW FARMS COUNTRY STORE • G & M HARDWARE • LEO CASTAGNO



Inyo Lumber Company Mill at Bishop



Rocking K Guest Ranch, Bishop



ATTEND the 17th ANNUAL

# Bishop Rodeo

## And Labor Day Celebration

SATURDAY - SUNDAY - MONDAY - SEPT. 1 - 2 - 3

Amateur Rodeo, Sept. 1    Professional Shows, Sept. 2-3

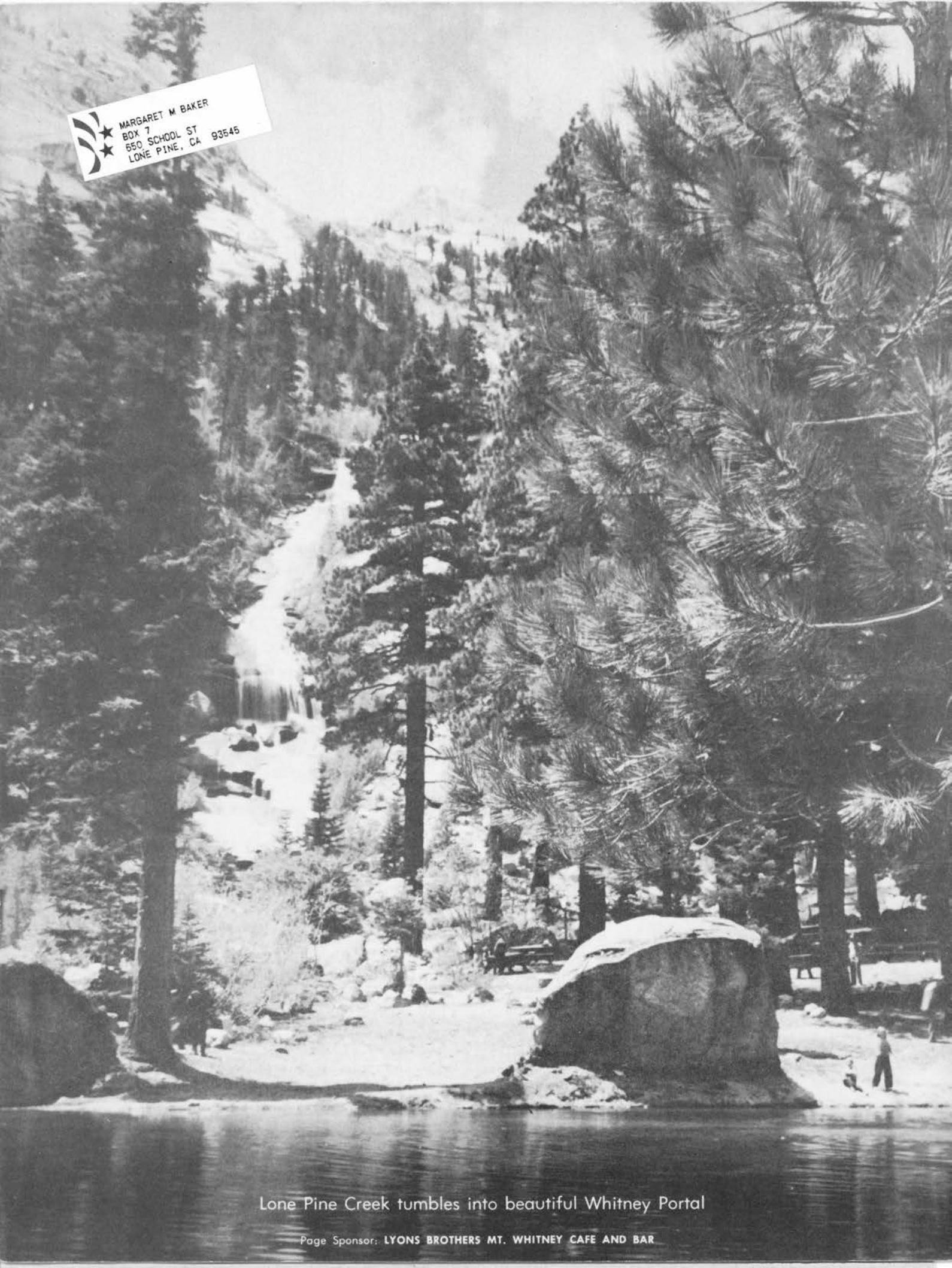
*R. C. A. Approved*  
*3 Big Days*

Parades - Rodeos - Dances - Picnic - Games - Contests

Sponsored by BISHOP HOMECOMING and LABOR DAY ASSOCIATION



MARGARET M BAKER  
BOX 7  
650 SCHOOL ST  
LONE PINE, CA 93546



Lone Pine Creek tumbles into beautiful Whitney Portal

Page Sponsor: LYONS BROTHERS MT. WHITNEY CAFE AND BAR