

1849-1949  
SOUVENIR

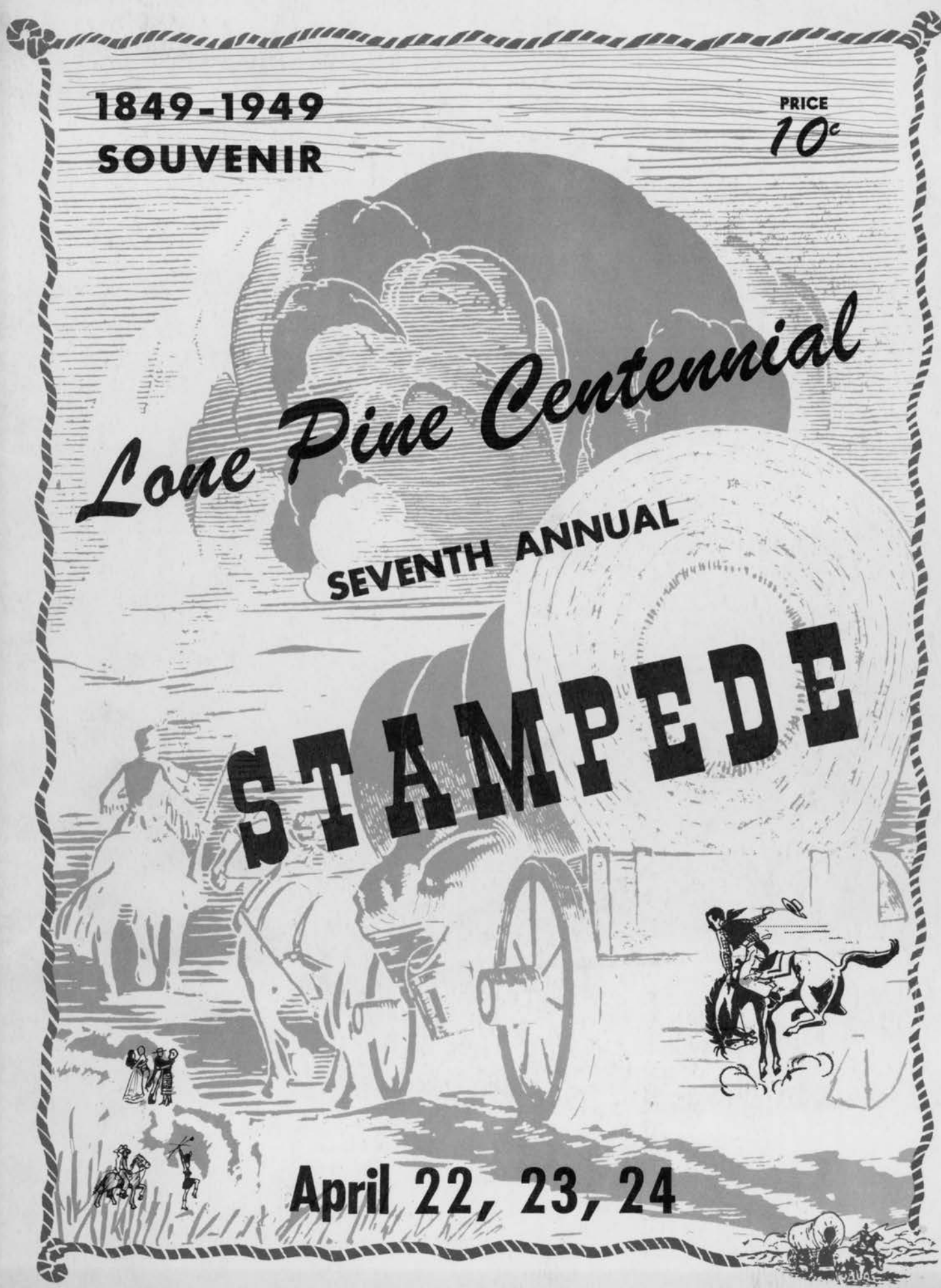
PRICE  
10<sup>c</sup>

*Lone Pine Centennial*

SEVENTH ANNUAL

**STAMPEDE**

April 22, 23, 24





AERIAL VIEW SMITHSONIAN SHELTER HOUSE  
SUMMIT OF MT. WHITNEY

Welcome Message:

We welcome you to our Centennial edition of the Lone Pine Stampede. We hope our show will be up to standards set in other years. We want you to enjoy it a lot.

STAMPEDE COMMITTEE,  
R. B. Spainhower,  
President.





Page Sponsor: **DOW HOTEL**

Home of the movie companies when on location in Lone Pine









Monache scenes — West of Inyo County's Newest Town,  
Grant, California — 25 Miles South of Lone Pine

Consolation Prize • Each Event • Steak Dinner  
JIM'S PLACE, GRANT, CALIFORNIA



## BRAHMA BULL RIDING

Time starts when bull leaves chute. Eight seconds will be allowed for the ride before signal is given by timer. Riding must be done with one hand and loose rope, with or without handhold, or rigging and one hand. No knots or hitches to prevent rope from falling off bull when rider leaves him. Rope must have bell under belly of bull. Riders who are knocked off at chute, or if bull falls, are entitled to a re-ride at discretion of judges. If rope breaks for any cause, contestant is entitled to a re-ride on same bull. If qualified ride is made with any part of rope in riding hand, he is to be marked. Rider is disqualified if he is bucked off, not ready when called, touches animal with free hand, or uses sharp spurs.

### Sponsors:

HALE'S WELDING SHOP

RAY PIERSON

"RED'S" MOBIL SERVICE

LONE PINE CAFE

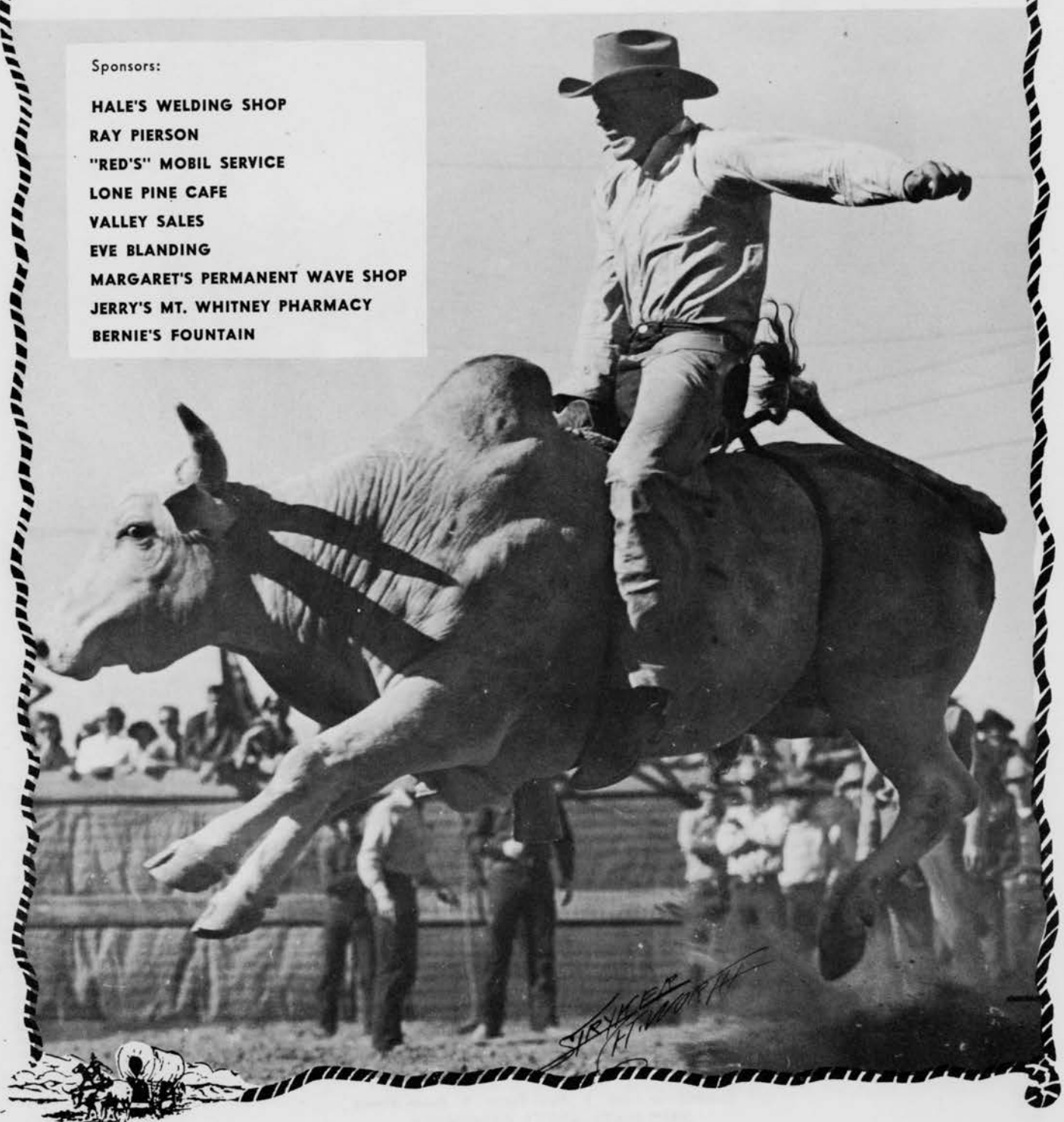
VALLEY SALES

EVE BLANDING

MARGARET'S PERMANENT WAVE SHOP

JERRY'S MT. WHITNEY PHARMACY

BERNIE'S FOUNTAIN







## AERIAL VIEW OF LONE PINE — FROM THE EAST

Lone Pine's history is quite typical of the West. Born of cows and miners in the early 1860's, it has seen its Indian wars, eras of rampant crime and free money, earthquakes, fires, floods and other disasters, as well as periods in which its residents have known successively riches and poverty. Now, living in an area of the four seasons within the great state of California is a distinct pleasure to her citizens — and to countless thousands who annually trek to her deserts and mountains in quest of all types of outdoor fun and recreation. In winter there are all appropriate sports, in springtime wildflowers abound, every summer streams lure thousands from city and county alike, for they're full of fine mountain trout. Then there's Indian summer, fall hunting, and this is the season when mountains and desert abound with color delightful to the eye, artist or not. The name "Lone Pine" is completely descriptive of how and why the little town gets its picturesque name. Actually, there was a lone pine tree which stood near Lone Pine creek. The only pine tree in the entire area, it fell some years ago.



## BAREBACK BRONC RIDING

Bareback bronc riding is one of the most spectacular events of the day. The broncs are ridden without saddles, one hand rigging is used. Riders may use their own rigging if it is not more than 10" in width at hand hold and not more than 6" 'D' ring, or not a freak. Judges decide on all rigging. Horses are numbered and drawn. Eight seconds is allowed for ride before signal is given by timer. Time starts when horse leaves chute. Riders knocked off at chute, or whose horse falls out of chute, are entitled to a re-ride at discretion of the judges.

### Sponsors:

**JIM'S BARBER SHOP**  
**MT. WHITNEY ROCK PRODUCTS**  
**MAZIE'S FOUNTAIN**  
**BILL'S FLOWER SHOP**  
**NICK FOTES**  
**JENNY'S SHOP**  
**HERMAN BUDKE'S SERVICE STATION**  
**CARTAGO SUPPLY**



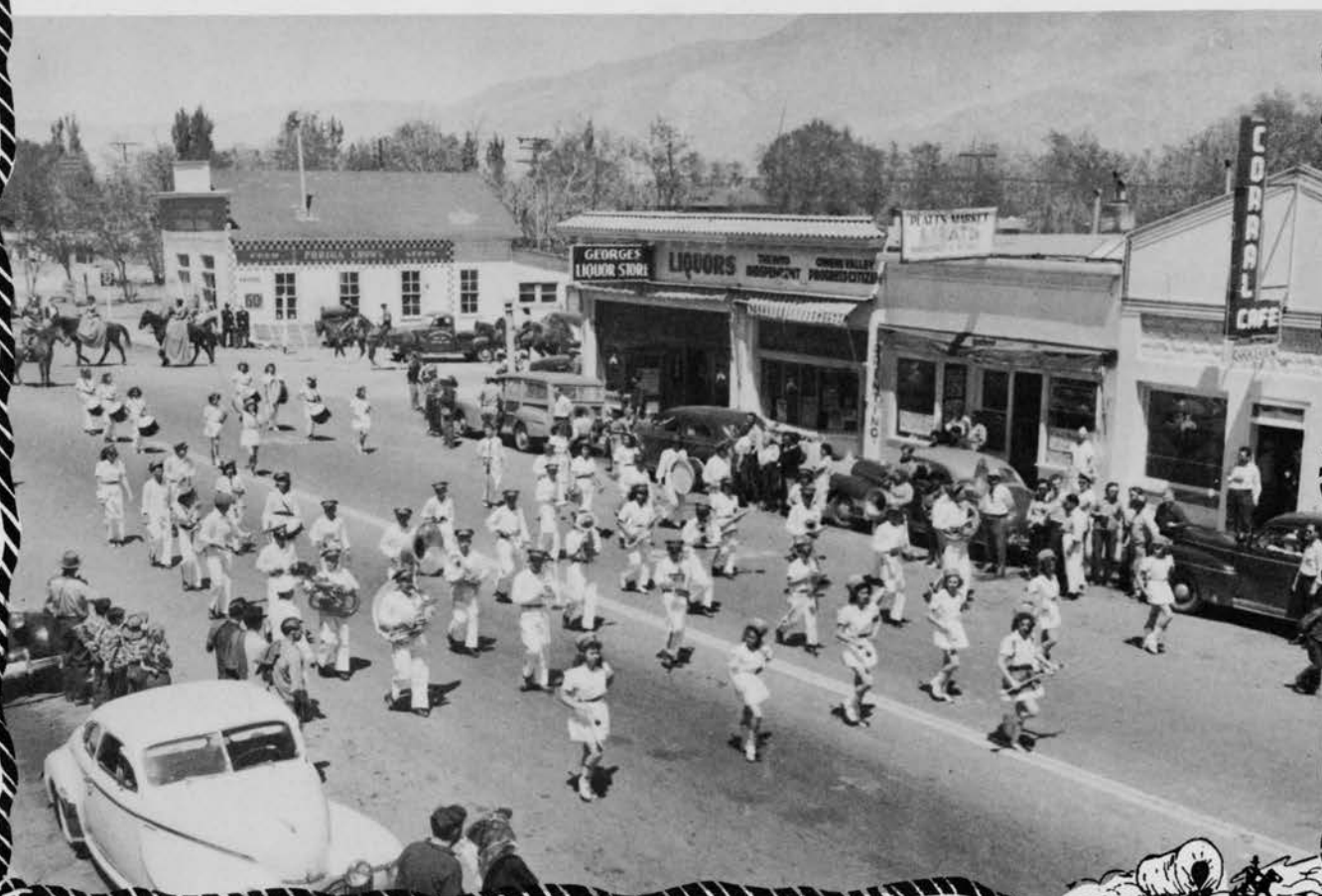
*STEVE  
H. WORTH*







Lone Pine High School Band — A tribute to the work of S. C. "Dinty" Moore



## CALF ROPING

Time starts when calf passes barrier. Two loops are allowed, and calf may be caught in any manner, providing rope goes over the head first. Contestant may adjust rope and reins in a manner that will prevent horse from dragging calf. When a roper busts a calf intentionally, in opinion of judges, roper is disqualified. Rope may be dallied, or tied hard and fast. Contestant must dismount, go down rope and throw calf, then cross and tie any three feet. If calf is down when roper reaches it, the calf must be let up and thrown by hand. Tie must hold until passed by judges, and roper must not touch calf after giving finish signal. Ten seconds penalty for beating or breaking barrier.



*SARVAKER  
CH. WORTH*



Quarter-page Sponsors: LLOYD'S SHOE STORE • DR. GEORGE SHULTZ  
J. C. PENNEY CO. • SAFEWAY STORES

LONE PINE — GATEWAY TO DEATH VALLEY



Quarter-page Sponsors: SPROUSE-REITZ CO. • INDIAN TRADING POST  
GEORGE'S LIQUOR STORE • NOGALES CLUB and CAFE





## SADDLE BRONC RIDING

Riders draw for mounts. If rider draws a horse he has once ridden during a contest, he must redraw. Contestant must ride as often, and on any horse, judges deem necessary. Riding is done with plain halter, one rein and saddle. Riding rein and hand must be on same side. After horse leaves starting place, horse must be spurred first jump out, high in the shoulders, and rider must continue to spur throughout the ride. Credit is given for spurring over point of shoulders. Ten seconds is allowed each rider from time horse leaves chute, or at snubbing before signal is given. Ride is completed when signal is given. Rider may not change hands or rein, wrap rein around hand, pull leather, or lose stirrup.



Half-page Sponsors: **CORRAL CAFE & BAR • SPANISH GARDEN**



## RED MOUNTAIN ROUNDUP

Red Mountain Roundup, held annually at Red Mountain, California, is the first Spring rodeo of the year. It is held the last week of March. At Red Mountain you can count on "the best" — it's an old time western show where "the sky's the limit!"

## STAMPEDE LIVESTOCK

Livestock used in the Lone Pine Stampede is supplied by Wilfred Cline of Lone Pine. Cline is one of the leading livestock men in California and Nevada and is a member of one of the oldest Inyo county families.

## INDIAN WELLS VALLEY STAMPEDE

A great Rodeo is planned for Indian Wells Valley May 7 and 8. For benefit of Camp Kemerec, a summer camp for youngsters, it is to be held adjacent to the Inyokern Naval Base. Plan now to attend the Indian Wells Valley Stampede.









# *The Alabama Hills*

Directly west of Lone Pine is a land of fantasy. Here many square miles of rocky upthrust, weathered by the elements into every imaginable shape, make up the Alabama Hills, the magnet which draws company after company from Hollywood annually.

## *Lone Pine Stampede, Inc.*

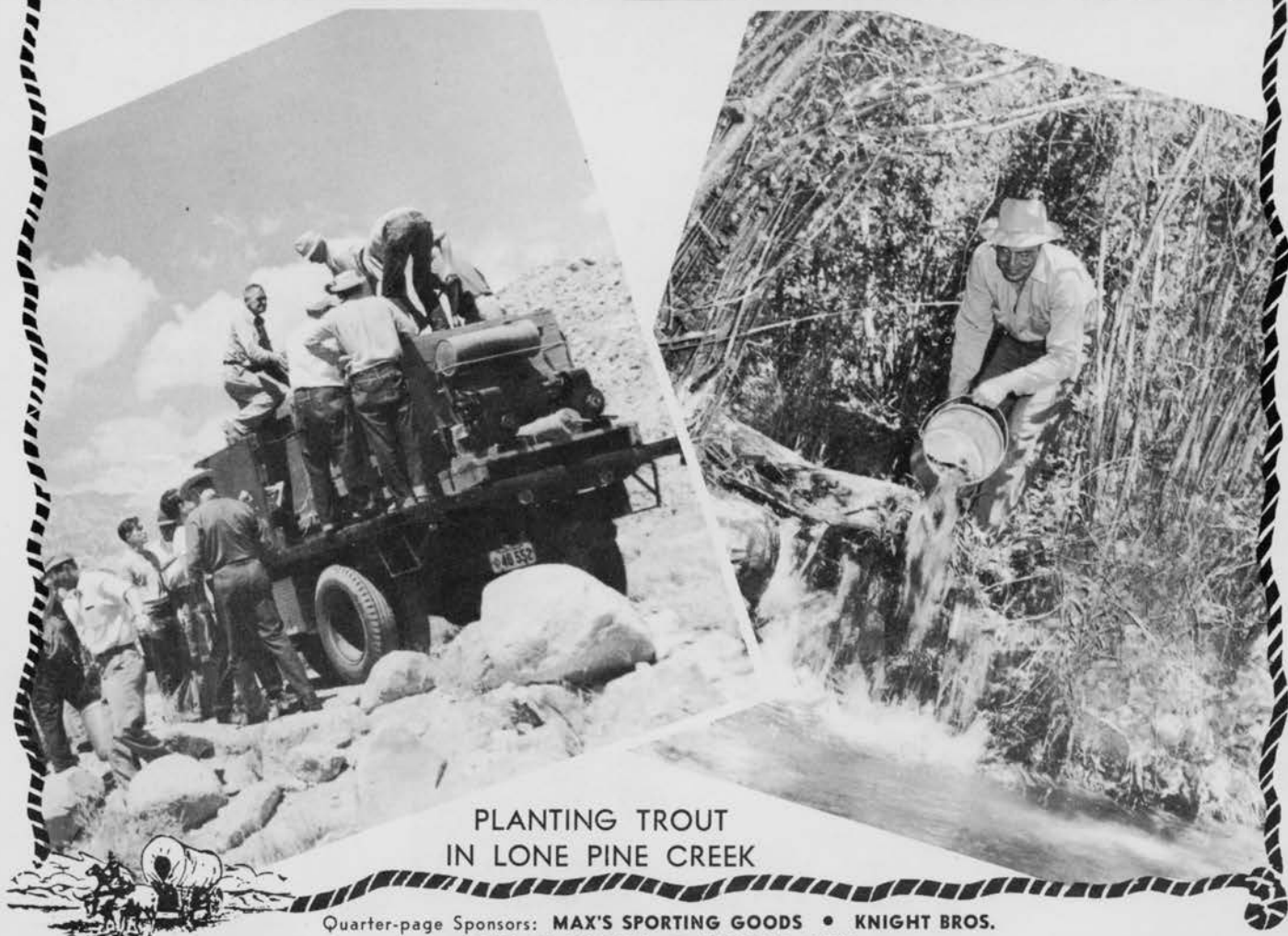
R. B. Spainhower, Pres.  
Ben Baker, Vice-Pres.  
Walter Jones, Exec. Sec.-Treas.  
Mrs. E. H. 'Ted' Cook, Sec.

### **OTHER TRUSTEES**

Frank Chrysler  
Otto "Slim" Honerlah  
Fred Reynolds  
E. H. "Ted" Cook  
Henry Olivas  
C. D. Ruiz

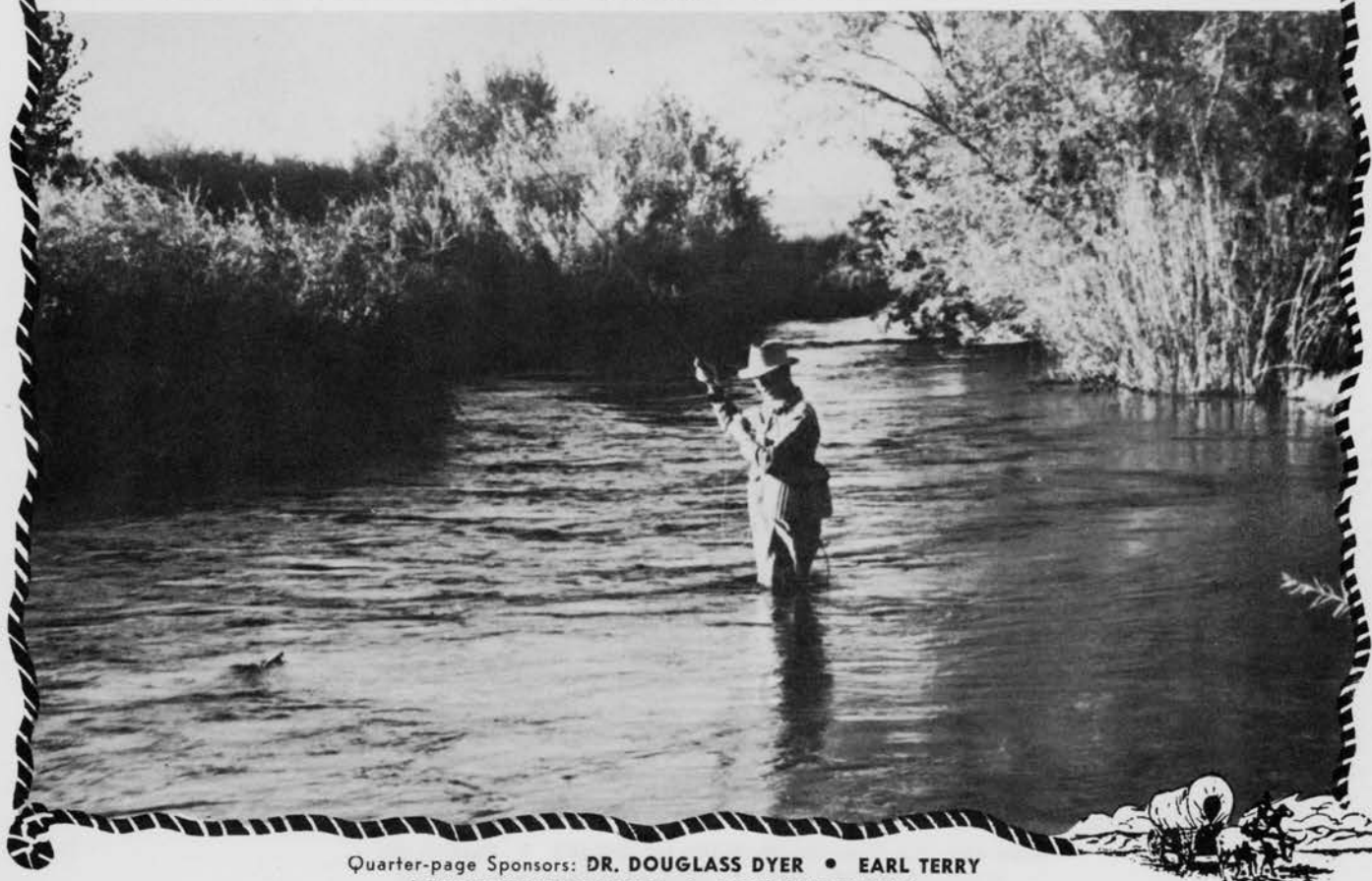
### **COMMITTEE MEMBERS**

George Anits  
S. C. "Dinty" Moore  
Harold Gates  
Harry J. Lee  
Jack Hopkins  
John A. Lubken  
Howard Miller  
Bruce Morgan



PLANTING TROUT  
IN LONE PINE CREEK

Quarter-page Sponsors: MAX'S SPORTING GOODS • KNIGHT BROS.  
BANK OF AMERICA • WILFRED CLINE



Quarter-page Sponsors: DR. DOUGLASS DYER • EARL TERRY  
LONE PINE DRUG STORE • LONE PINE BAKERY





## HUNTING

Hunting is good in Inyo county. Last season 1350 bucks were taken and hunters bagged many limits of duck, geese, pheasant and quail. Airfields back in the wilderness areas are a boon to the hunter. Too, a state game farm at Manzanar, 10 miles north of Lone Pine, is planned, as is also a series of check dams in the Owens river designed to provide feeding and nesting areas for wild-fowl.

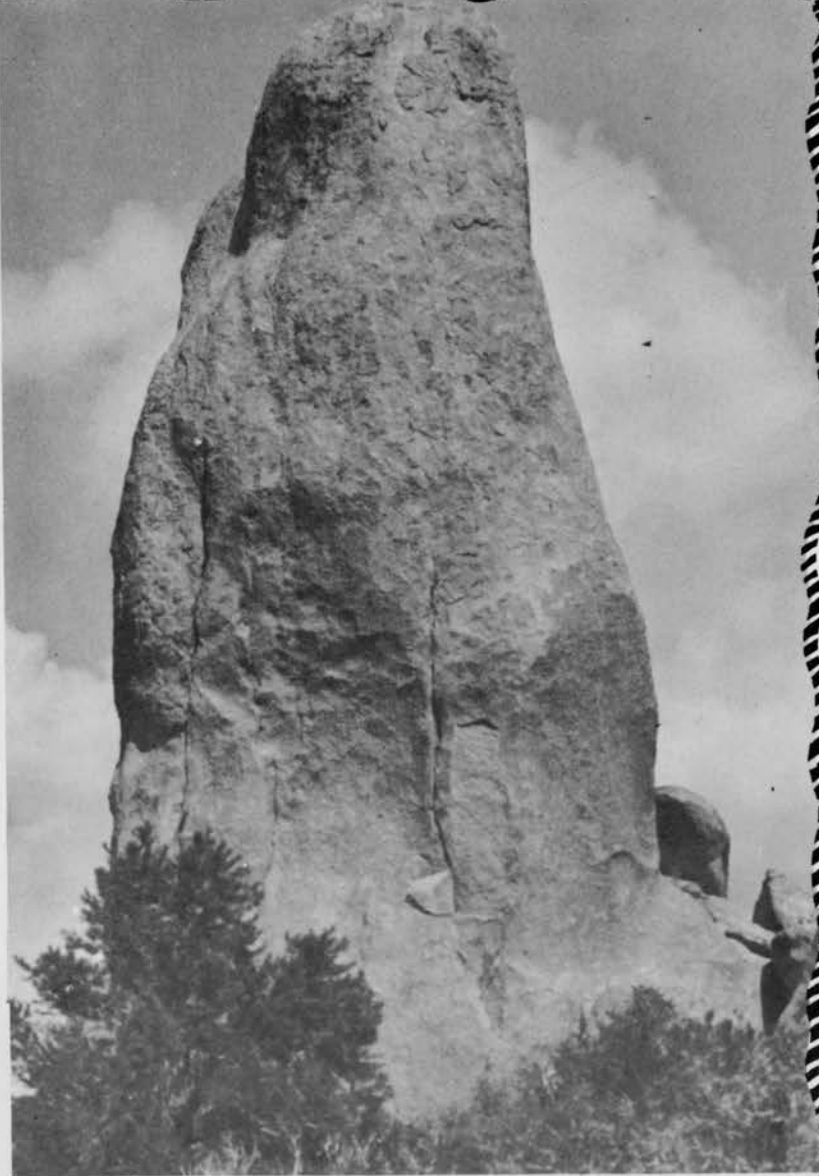


Quarter-page Sponsors: HOPKINS HARDWARE • INYO CAFE  
WESTERN TRUCK LINES • KERN WHOLESALE, Bakersfield



## INDEPENDENCE

Independence, laying between Mt. Williamson on the Sierra crest and the Winnedumah Monument atop the Inyos to the east, is the County Seat of Inyo. Many visitors are attracted to the Independence area for hunting, fishing and winter sports.

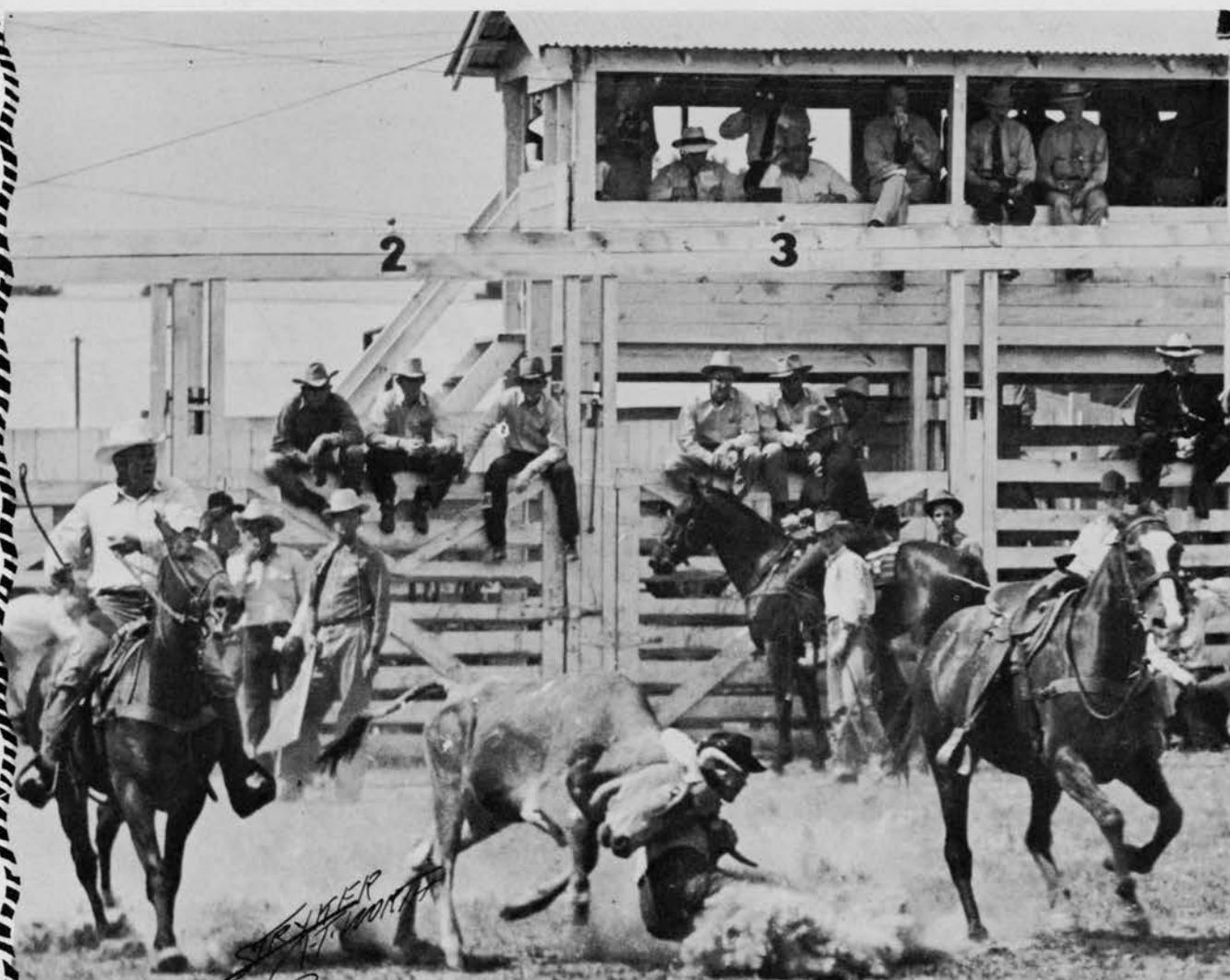


Quarter-page Sponsors: **MAIRS' MARKET** • **HILLIER HARDWARE**  
Additional Sponsors: **King's Pharmacy** • **Winnedumah Hotel**  
**Krater's Insurance** • **Paul's "76" Station**



## BULLDOGGING

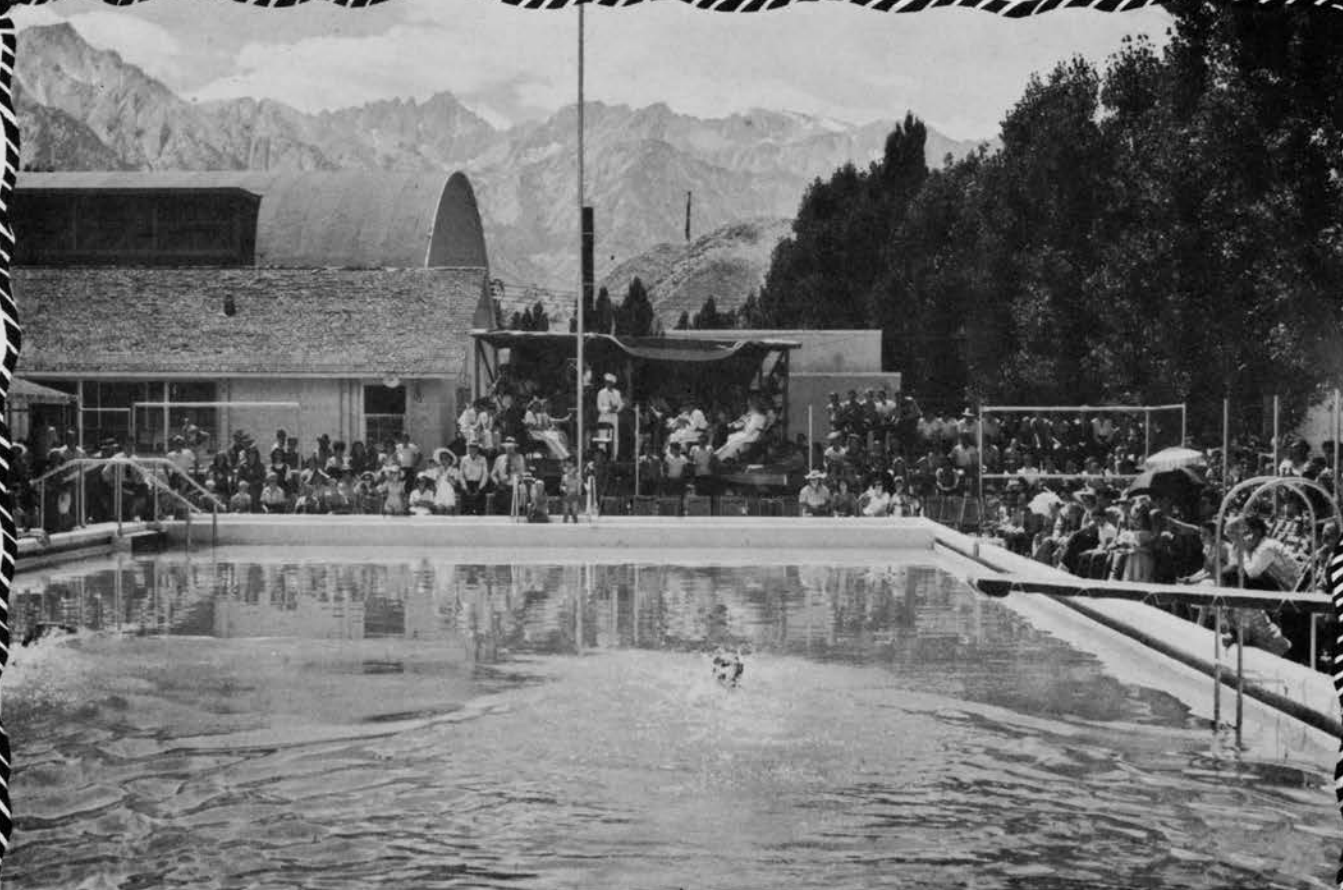
Steer must be caught from horse, brought to a stop and twisted down. If steer is accidentally knocked down before being brought to a stop, or is thrown by the bulldogger by putting the animal's horns into the ground, it must be let up on all four feet and then thrown. Steer is considered down only when it is lying flat on its side, all four feet and head straight. Each bulldogger has a "hazer" who attempts to keep the steer running straight ahead. Hazer must retire from the field as soon as the wrestler catches the steer, and he must not render any assistance. Ten seconds penalty for breaking the barrier.



Additional Sponsors: BRYERTON'S FIRESTONE STORE • SCHROEDER'S RICHFIELD SERVICE  
LONE PINE CLEANERS • CRAWFORD'S SIERRA MOBILGAS SERVICE • WELLS CARGO  
FRANK LASKY • DAY'S TIME CLINIC • LONE PINE DAIRY







The Lone Pine Plunge, pictured above, was planned as a living memorial to our World War II dead and was built entirely through donations of efforts and material by local citizens. At the right is pictured the "old way."



Quarter-page Sponsors: J. W. COPELAND YARDS • ELLIS MOTORS  
BURKHARDT'S UNION SERVICE • MT. WHITNEY PALACE

## TEAM ROPING

Team roping is regarded by many contestants as the outstanding event of a rodeo. Time starts when steer crosses the barrier. One roper must first catch head, half head or horns of steer, and the other must catch one or both hind feet. Each is allowed two loops. If either misses with both loops, team receives no time. If the animal falls before second rope is on the hind feet, he must be permitted to regain his footing. Both ropes must be on the steer and horses when tie is started. Steer must be tied below hocks. Catching by head and one front foot disqualifies team.

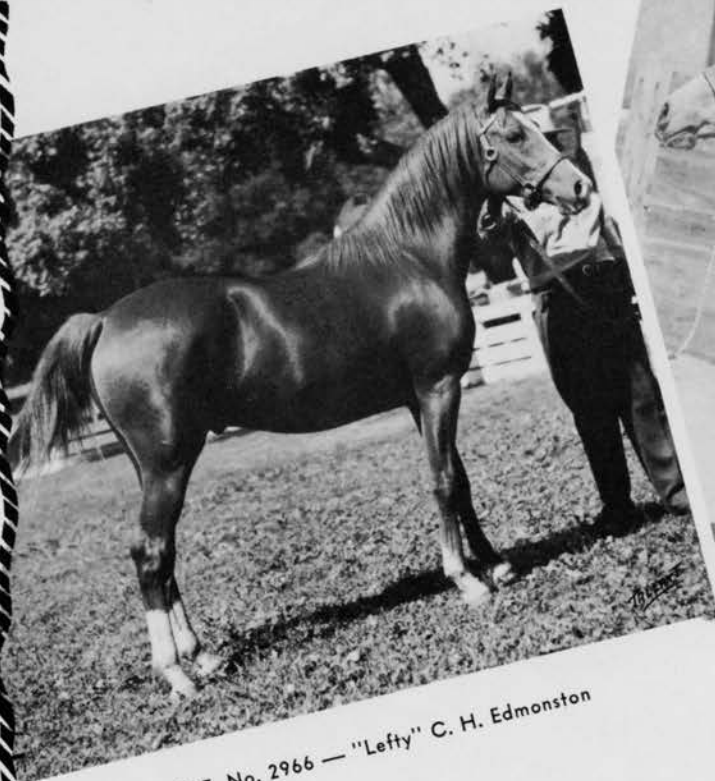


## INYO-MONO BRAND OWNERS STEER-STOPPING

Brand owners of Inyo-Mono gather annually at Lone Pine in friendly rivalry for special awards given in the steer-stopping event. They say it's a bit tougher out in front of a crowd than down in the home corral. Time starts when steer crosses barrier. Contestant is allowed only one loop, and steer must be caught by the head.

Additional Sponsors: RALPH TEMPERLY • TATUM'S LAUNDRY • DEWITT MORGAN  
OWENS VALLEY ELECTRIC • CHAS. SHELBY'S TEXACO SERVICE • LONE PINE TRANSFER  
FRANKIE STEVENS, Golden State Distributor • HARRY COOPER, Pabst Distributor





SEF, No. 2966 — "Lefty" C. H. Edmonston



IBN — Foster Smith



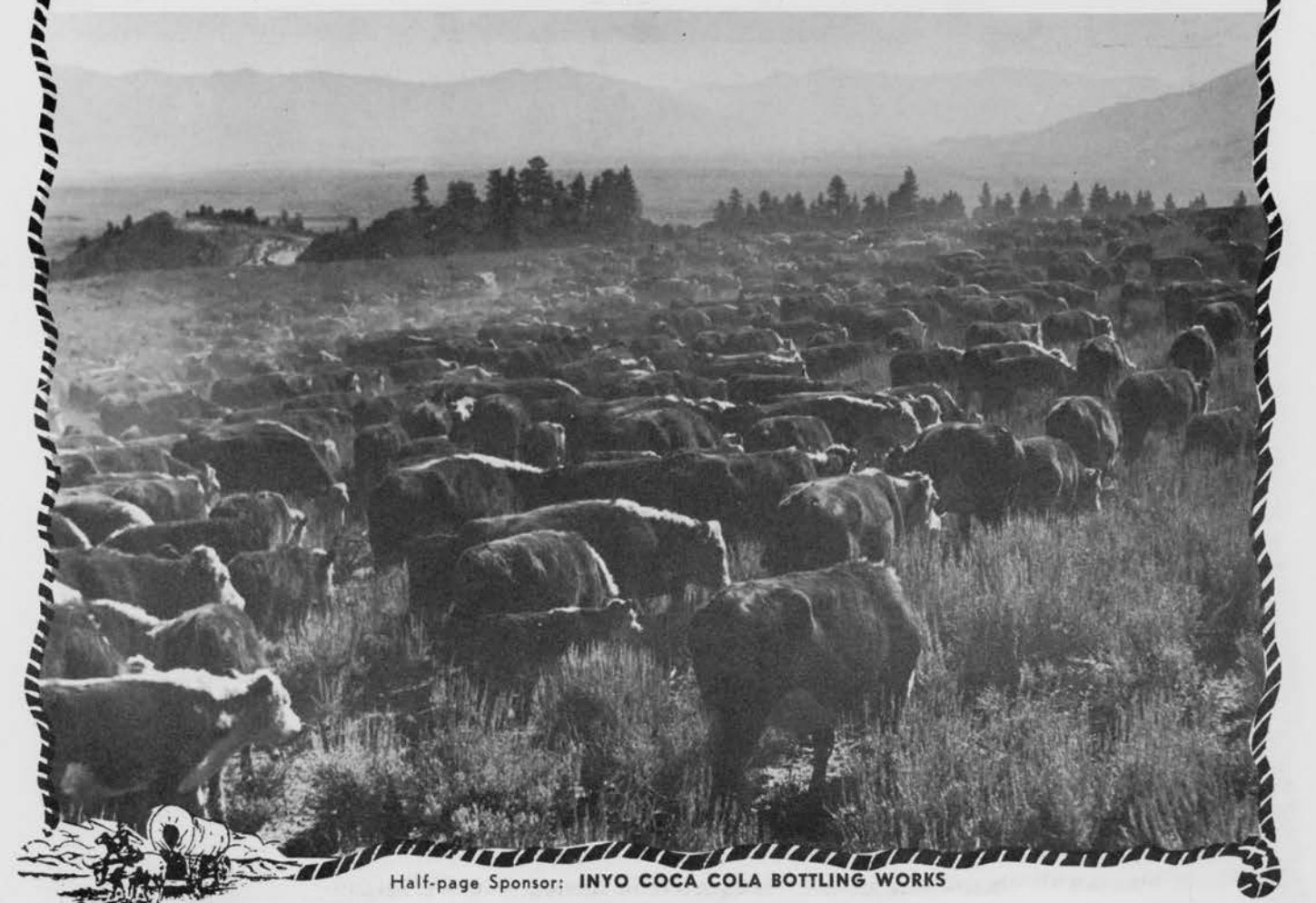
CANWIN — Mrs. C. H. Edmonston

## LONE PINE ARABIANS

Quarter-page Sponsors: **FEAR'S CHEVRON SERVICE • DAN E. NELSON**  
**EDNA'S COFFE SHOP • CHALFANT PRESS**







Half-page Sponsor: INYO COCA COLA BOTTLING WORKS

Quarter-page Sponsors:  
EASTERN SIERRA CO. • CHAS. M. SPITZNAGEL, Nothing but Insurance



## BISHOP

When Labor Day rolls 'round  
next fall

We'll drive to Bishop and greet  
you all —

And see the sort of a Western  
show

They give where the boys are in  
the know.

Those guys were born to the smell  
of the sage,

And fork their broncs at an  
early age.

Their "Home Coming" show is the  
real thing —

Go there next fall! Come here  
next spring!





*Russell Henderson*

Tommy & Specialty, Inc.





LONE PINE CHAMBER OF COMMERCE

Now in its fifth year of outstanding community service



MARGARET M BAKER  
BOX 7  
650 SCHOOL ST  
LOVE PINE, CA 93545



MT. WHITNEY FROM WHITNEY PORTAL ROAD



Sponsor: LYONS BROS. MT. WHITNEY CAFE, Lone Pine