



Ike Livermore

Norman (Ike) Livermore is one of the best friends packers ever had. Now retired at age 75, Ike's career spans many activities. As Secretary for Resources for 8 years under Gov. Reagan (1967-74) and later as Member and President of the State Fish and Game Commission (1980-84), he was a major force in far-reaching decisions rebounding to the benefit of the High Sierra Wilderness and the packing industry.

Ike was Grand Marshall of the second Mule Days in 1971 and was the key in arranging for Gov. Reagan to come to Bishop in the same capacity in 1974.

At Mineral King, the story was universal that Phil Davis, one of the big-time packers there in the early 20s, fell in love with his head packer's wife and married her in exchange for two strings of mules.

In 1934-35, with the help of Allie Robinson and packers of both sides of the Sierra, he organized and was the first Executive Secretary of the High Sierra Packers Association. At that time, based on a motorcycle trip when

he visited all pack stations south of Tioga Pass, he wrote and distributed a detailed report on the High Sierra

A one-arm packer (Harvey Watts) whose only explanation of his forearm loss was that "it was bit off."

packing business. At that time this covered some 71 High Sierra pack outfits running some 2,200 head of stock.

He regards his two most important accomplishments as: (1) That he has led pack trips over more High Sierra passes than any other packer (alive or dead!), and (2) that he was the key influence in persuading Gov. Reagan and President Nixon to "deep six" the long pro-proposed trans Sierra Minarets Road which, if built, would have cut the John Muir Trail in half and greatly depreciated the High Sierra Wilderness.

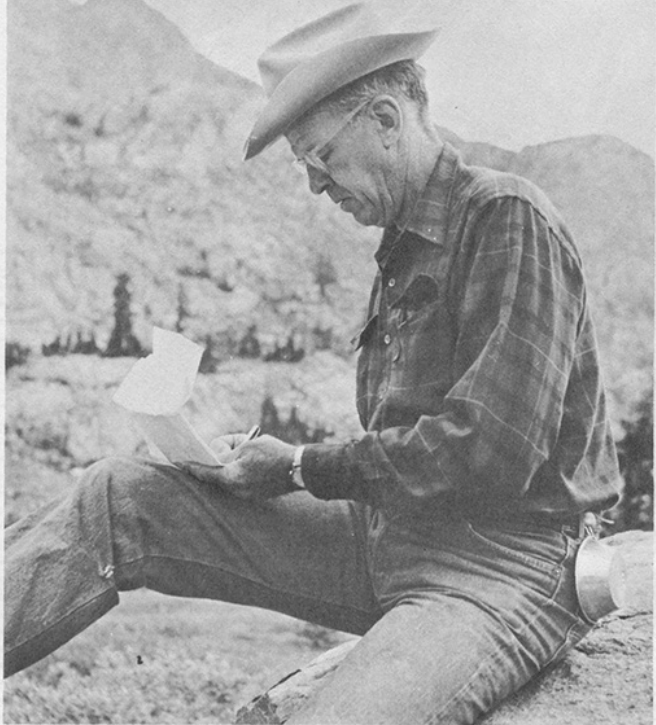
As packer and partner with Ray Buckman of the pack outfit at Mineral King (1929-1946) and with Bruce and Charles Morgan and Tommy Jefferson of Mt. Whitney Pack

Trains based in Lone Pine (1946-1973), Ike was at one time the owner of the largest pack train in California.

As packing contractor for the large Sierra Club "High Trips" in the years before these large gatherings were Packing in a fat man from Mineral King who, even though we gave him the biggest saddle possible, was so fat that he wore a blister on the front of his stomach.

abandoned, he traveled through the high country with as many as 120 head of horses and mules, 15 packers, and a "nighthawk."

Ike and his wife Dina have 5 children - 2 girls and 3 boys. All are wilderness enthusiasts, and his 3 sons during their school and college years, followed him in packing –



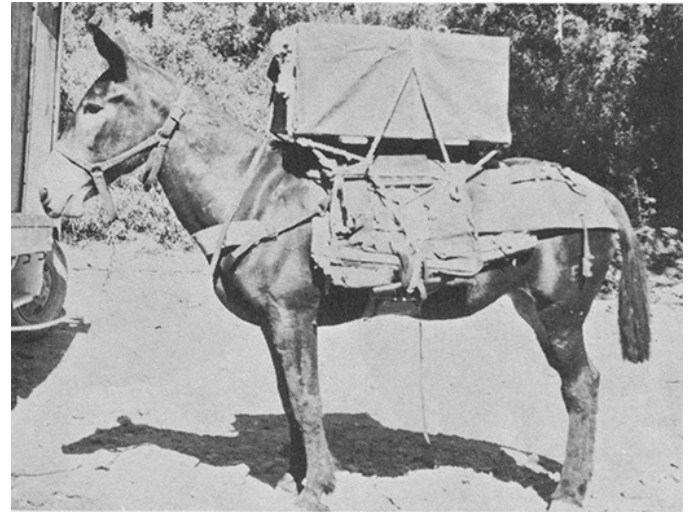
*Ike Livermore taking notes on a Fish and Game fact finding trip, Sept., 1967.
Photo by Ward Gillilan, Dept. of Fish and Game*

working at pack stations or dude ranches in the Sierra, Yosemite, Colorado, Wyoming and Montana.

I saved the life of a tourist who had bloated from eating a whole can of tomato sauce. I was able to have some rubber hose in the camp and "blew" an enema into him which he later reversed.

Ike now divides his time between his home in San Rafael and a 7,500 acre ranch in northern Napa County, which he owns with his four brothers, a continuous family ownership dating to 1880. Though "retired," he still takes his family and friends on yearly Sierra back country trips, and is currently involved in many environmental activities. Pictured is a mare named "Lou" with a heavy wood stove packed on her, circa 1946. Sierra Club "high trips" used to require as many as four of these extra stout "stove mules." These bulky and heavy wood burning cook stoves also required the services of an outstanding and husky packer, Pete Buckly being one of the last employed by Ike Livermore.

By the late 1940s, the "high trips" were discontinued due to competing pressure from increasing numbers of smaller backpack parties. "Lou" later saw service on Bruce Morgan's Mt. Whitney Pack Trains 20 mule team. (See caricature drawing of Bruce and mules on top of Mt. Whitney, below)





50 YEARS LATER

In 1936, forty-eight west-side and twenty-two east-side packers served the Sierra. Fifty years later there are only twenty-eight packers left as members of the High Sierra Packers Association. Fourteen from each side of the High Sierra remain of seventy packers in 1936.

Below, compare the stock count from the Normal B. Livermore, Jr. report on "The Tourist Packing Business of the High Sierra Region," published February 1936, to the stock counts of the 1986 Packers Association records.

HIGH SIERRA PACKERS 1936

	High Sierra Packers	Location	# Stock
1	Allie Robinson	(Onion Valley, Symmes Creek, Taboose) Oak Creek - Independence	170
2	Chrysler & Cook	Mt. Whitney Pack Trains	100
3	Nelson Smith	Camp Nelson, Quaking Aspen	90
4	Crabtree Brothers	Coolidge Meadows	75
5	Billy Brown	Jackass Meadows, Bass Lake	75
6	Lloyd Summers	Mammoth Camp Pack Outfit, Agnew Mdw. Lake Mary	70
7	Earl McKee	Giant Forest	70
8	Earl Pascoe	Kern River (20 miles from Kernville)	65
9	Halliday	Rainbow Pack Outfit, Bishop Creek	60
10	George Parker		60
11	Archie Dean	Onion Valley, Independence	60
12	Roland Ross	Mineral King	60
13	Cecil Pack Train	Big Meadows, Badger	60
14	V. Cunningham	Huntington Lake (High Sierra Pack)	60
15	Slim Tatum	Frontier, June Lake	52
16	R. H. Logan	Big Pine Creek, Big Pine	50
17	Barney Sears	Olancho	50
18	Fairview Pack Outfit	Kernville (Camp Pascoe)	25
19	J. Robinson	Shaver Lake	50
20	Clyde Johnson	Crown Valley	50
21	Phil Buckman	Mineral King Portion of permit became Red's Mdw. Pack	49
22	McGuffin	Lake Mary Pack Outfit, Mammoth	45
23	D.G. McComber	Broken Bow Pack Outfit, Rock Creek	42
24	Dick Burns	Olancho	40
25	Burkhardt & Olivas	Olancho	40
26	Sam Lewis	Haiwee Canyon, Little Lake	40
27	Cecil Pascoe	Bar 53 Pack Outfit, Kernville	40
28	Art Griswald	Bolch Park	40
29	Hugh Traweek	Hume	40
30	E.R. Casner	Mono Hot Springs	40
31	Schober	Bishop Creek	35
32	Poly Kanawyer	Hume	35
33	Cecil Thorington	McGee Creek	30
34	Wally Wilson	Lone Pine	30
35	Jordan Hot Springs	Southfork, Kern River	30

An additional 35 packers that had a total of 661 head of livestock. Estimated total excluding donkeys - 2614.

Below, compare the stock count from the Normal B. Livermore, Jr. report on "The Tourist Packing Business of the High Sierra Region," published February 1936, to the

stock counts of the 1986 Packers Association records. Horseshoe and Monache Meadows, stringent Park livestock regulations and the failure to maintain trails on the

General Area of Packers	1936		1986	
	# Packers	# stock	# Packers	# stock
Independence	3	290	1	less than 80
Lone Pine	5	220	2	70
Olancho/Little Lake	4	138	1	70

Construction of roads and dams on the western slopes of the Sierra destroyed the need for many of the packers on the westside. Today only 14 packers remain

of 48 in 1936; and, most have relocated to be closer to the roadheads at the entrance to the current wilderness boundaries.

HIGH SIERRA PACKERS 1986

1	Red's Meadow Pack Outfits	120	16	Cottonwood Pack Station	50
2	Rock Creek Pack Station	110	17	Cedar Grove Pack Station	50
3	Kennedy Meadows Resort (Sonora)	100	18	Schober Pack Station	45
4	Rainbow Pack Outfit (Onion Valley & Bishop Creek)	85	19	Pine Creek Pack Station	44
5	Mammoth Lakes Pack Outfit	85	20	Kennedy Meadows Pack Station	40
6	Mineral King Pack Station	70	21	Mather Pack Station	40
7	High Sierra Pack Station	70	22	Virginia Lakes Pack Outfit	30
8	McGee Creek Pack Station	65	23	D & F Pack Station	30
9	Wolverton Pack Station	65	24	Horse Corral Pack Station	30
10	Kerrick Corral	65	25	Muir Trail Ranch	30
11	Minarets Pack Station	60	26	Lost Valley Pack Station	25
12	Yosemite Trail Pack Station	60	27	Mt. Whitney Pack Trains	20
13	Frontier Pack Train	60	28	Little Antelope Pack Station	20
14	Golden Trout Wilderness Pack Trains	60	Estimated Total No. horses & Mules		1579
15	Leavit Meadows Pack Station	50	*Figures calculated from stock reported to the High Sierra Packers Association.		

Yosemite Park & Curry Co. livestock counts have been deleted from this comparison. Today Curry runs over 350 horses, mules and burros.

These figures have been compiled by Craig London.