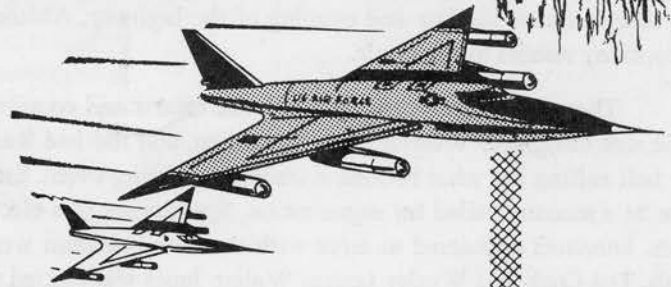
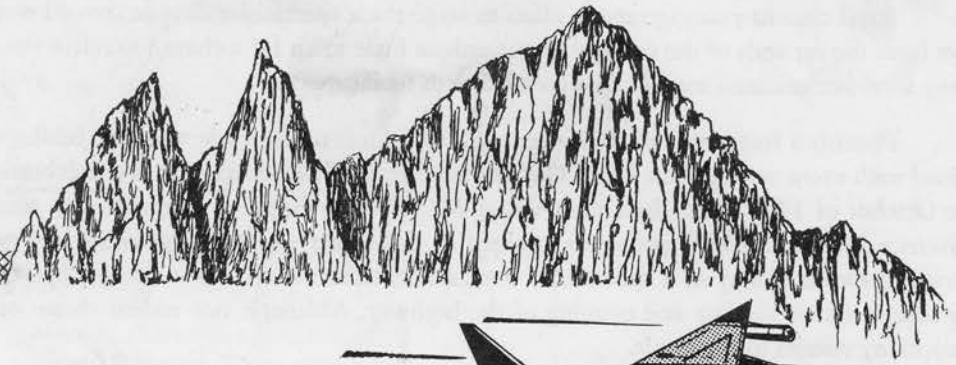
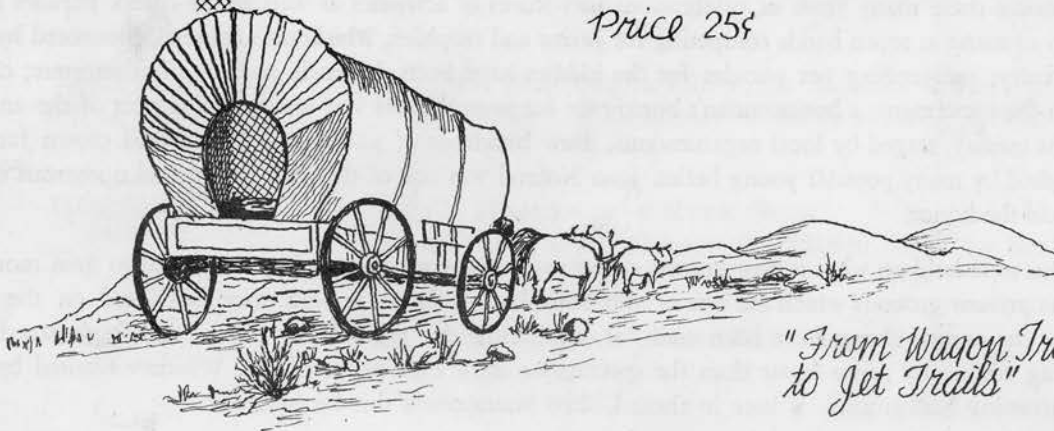


THE HISTORY OF THE LONE PINE STAMPEDE



SOUVENIR
of
LONE PINE
STAMPEDE
1963

Price 25¢



*"From Wagon Trails
to Jet Trails"*

THE HISTORY OF THE LONE PINE STAMPEDE

Local citizens years ago made plans to stage these spectacular days of the old west and bring visitors and champion cowboys from the far ends of the country to our unique little town for a chance to relive the wild west in a gala weekend celebration. Many local businessmen may well be credited with its inception.

Possibly a forerunner of the current and well known Stampede were the Jubilee celebrations of the early 30's, the fourth annual such event was held on Labor Day weekend in 1935. Another such big celebration was the Wedding of the Waters in late October of 1937 when the Death Valley-Mt. Whitney highway program saw many honored notables present, including Governor Merriam. This pageant was unique in California and was highlighted by water brought from Tulainyo Lake and carried to Death Valley in a spectacular observance, culminated with a fireball by beacon fires from Mt. Whitney signaling the completion of the fete and opening of the highway. Although not rodeos these were fine community performances, and drew many visitors to the locale.

Then in April of 1941, through the efforts and community spirit of a few local citizens, the first big show of rodeo fame was instigated. Wilfred Cline, stockman, and the late Russell Spainhower, Southern Inyo rancher and cattleman, started the ball rolling for what became a traditional spring event. Stock for the rodeo was provided by Cline and by a unanimous vote, at a meeting called for organization, Spainhower was elected Stampede president, a position he held for nine consecutive years. Directors appointed to serve with the new president were Ben Baker, Howard Miller, Fred Reynolds, Otto "Slim" Honerlah, Ted Cook and Wesley Logan. Walter Jones was elected secretary-treasurer, a post he filled continuously for 21 years. Announcer for this first rodeo was Jack Hopkins, this spot is still occupied by him and he continues to cover the shows in paramount form. Ben Baker continues to be a most active member of the committee and "Slim" Honerlah, until this year, has faithfully served as a committee member.

After eight years of fine performances the Stampede became an incorporated organization and since then has been an RCA show of top caliber. The first such show boasted prize money of \$850 plus entry fees and during the years of growing popularity the last purses totaled \$1800 plus entry fees, making prizes running close to \$4000.

As the Stampede continued to grow and become more widely known amongst the professionals such top-notch names in the rodeo world as Casey Tibbs, Rex Connley, Bill Linderman, Ross Dollarhide, Chuck Shepard, Don Adams, Lawson Fore, Bill Hogue, Enoch Walker, famed Canadian cowboy, appeared on the rodeo program. One of our own young cowboys that grew up in this community, Wayne Cline, is now in good money in rodeo circles. Among other notables who have added much to the local shows with their stellar performances have been Joaquin Sanchez, Fes Reynolds and Wes Curtis.

Let us not forget that along with these professionals, our local businessmen have contributed much in making these shows the pride of the community. Following the nine year term of Russell Spainhower as president, by-laws were amended to read a one year term for each president and beginning in 1951 the following citizens served well as leaders of the Stampede Inc.: Jack Hopkins, Ben Baker, Fred Reynolds, Tom Noland, Norvil Aigner, Henry Olivas, Lefty Edmonston, C. M. Richards, Bob Rutherford, Gwen Gardner, Bud Slater and Joe Bonham. Other names, to mention a few, who have played major roles in the successful celebrations are Frank Chrysler, Ted Cook, John Morris and Howard Miller.

Calendar of events during these many years of celebrations lists scores of activities as well as the rodeo. Parades have been of first class quality with as many as seven bands competing for prizes and trophies; whiskerino contests, sponsored by the Lions Club, brought keen rivalry; outstanding pet parades for the kiddies have been the pride and joy of youngsters; carnivals too came in for a share in the excitement; a businessmen's burro race for several years was a stimulating part of the annual weekend; barbecues of highest quality, staged by local organizations, drew hundreds of guests and the coveted crown for the "Stampede Queen" was cherished by many popular young belles. Jean Noland was one of the first queens and numerous other young teenagers have since held the honor.

In the beginning rodeos were held on what is now known as the town ball park and as they continued to gain momentum plans materialized for the present grounds which are one of the best. Hundreds of persons may be seated on the fine grandstands, and monies from the annual shows have been used for improving the grounds to the present high standards. What more picturesque setting could any arena boast than the spectacular snow clad peaks of Mt. Whitney fronted by the pictorial Alabamas for a contrasting background. Where in these United States could this be equaled?



Barbara Getty, right, assumes role of Queen for the 1963 Lone Pine Stampede from the 1962 Queen Janet Barnes.



Keeler stage leaving for Mojave. It took three days to make the trip. Picture by Geo. Cook, Lone Pine 1908.



Chuck and Eva Whitney, Operators
Phone TR6-4661 or TR6-2281

Jack's GATEWAY Coffee Shops

BAKE
SHOP

LONE PINE, CALIFORNIA

OPEN
24 HOURS
A DAY

LONE PINE BAKERY And COFFEE BAR

Home Of Chuck Wagon Bread
COMPLETE LINE OF BAKERY PRODUCTS



Breads

Cakes

Pies

Pasties

Cream Goodies

Cookies

Coffee Cakes

Donuts

Decorated Cakes Made to Order

131 S. Main

TR 6-4811

LONE PINE

FRONTIER MOTEL

HIGHWAY 395 & U.S.6
TR 6-2751

- ✓ COOLED BY REFRIGERATION
- ✓ TELEVISION
- ✓ BEST WESTERN APPROVED
- ✓ ROOMS WITH TUB OR SHOWER

LONE PINE

*The largest heated
swimming pool
in Lone Pine*

Margies MERRY-GO-ROUND

CHARRY BROILED STEAKS
BAR-B-Q CHICKEN & RIBS

Lone Pine



Rutherford's

MOBIL & GARAGE SERVICE

403 South Main
LONE PINE

TR 6-2376

SIERRA CHALET DINER

Across From The

Lone Pine Roadside Park

A Complete and Modern FROSTY FREEZE
500 N. Main Lone Pine



GLASSPAR • • AMERICAN TRAILERS

MERCURY
OUTBOARDS
MerCruiser

BOB LUND'S GARAGE

361 SOUTH MAIN ST.
BIG PINE, CALIF.

Bob Lund

Res. WE 8-2343
Bus. WE 8-2341

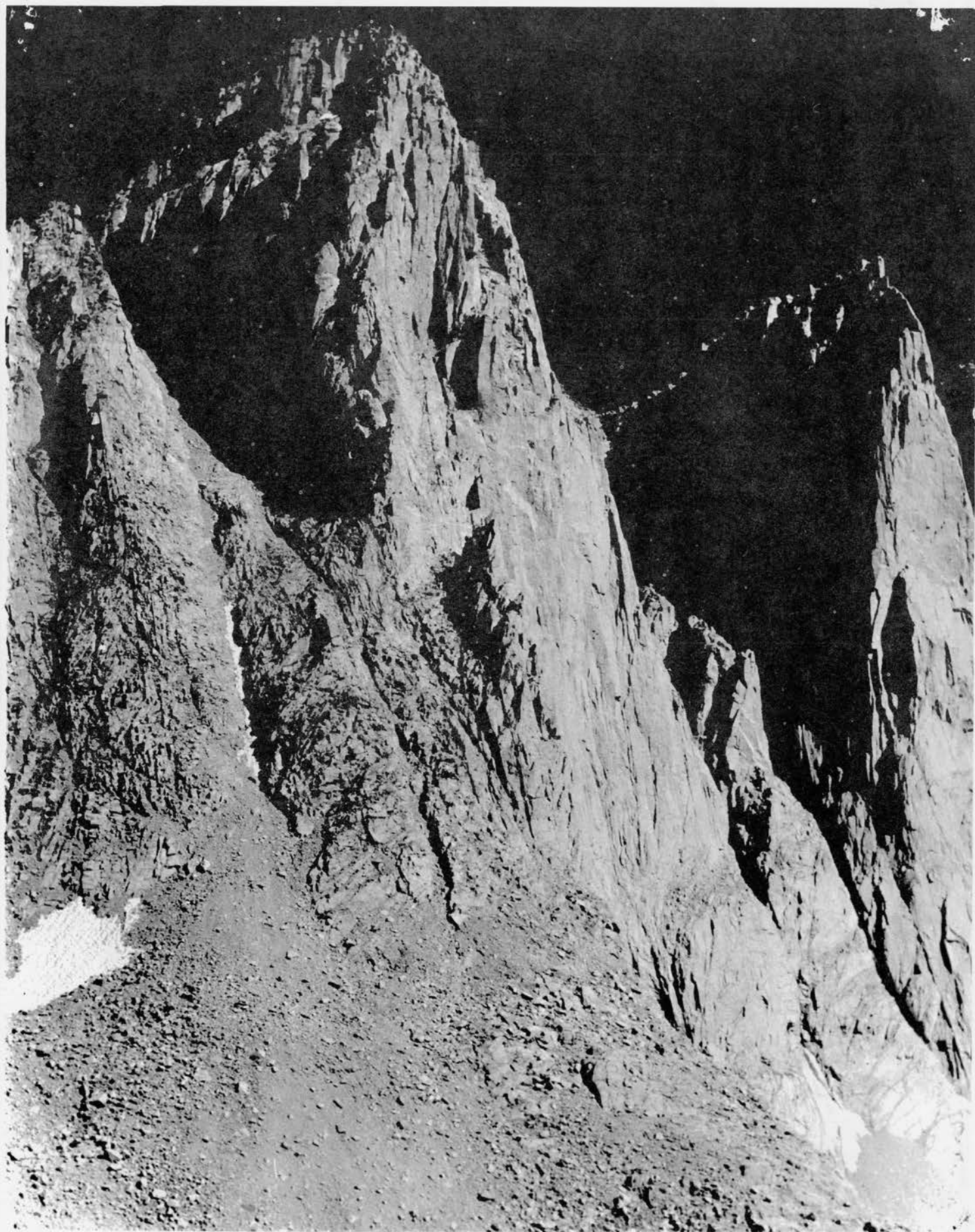


JOE GULLINO

Your Texaco Star

Dealer

WE 8-2235
BIG PINE, CALIF.

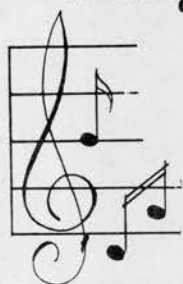


Pinnacles just south of Mt. Whitney.



Walt and Bud
CHEVRON Gas Station
 INDEPENDENCE
 TR 8-2581

Margaret L. Bowles

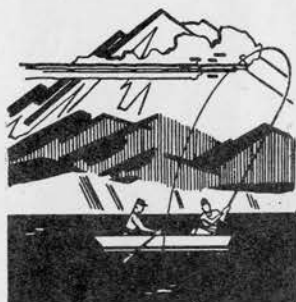


**Seeburg
 Juke Boxes**

**BACKGROUND MUSIC
 RENTALS**

Phone TR 6-4331

Lone Pine



In Lone Pine It's...

**Hopkins
 Hardware**

**HARDWARE
 SPORTING GOODS
 TOYS**

**HUNTING & FISHING
 SUPPLIES
 and LICENSES**

**BLOCK ICE
 Coin Operated
 24-Hours**

COLD STORAGE

*Phone
 TR 6-2501*

**Southern Inyo
 Medical Group**

LONE PINE

FURNACE CREEK

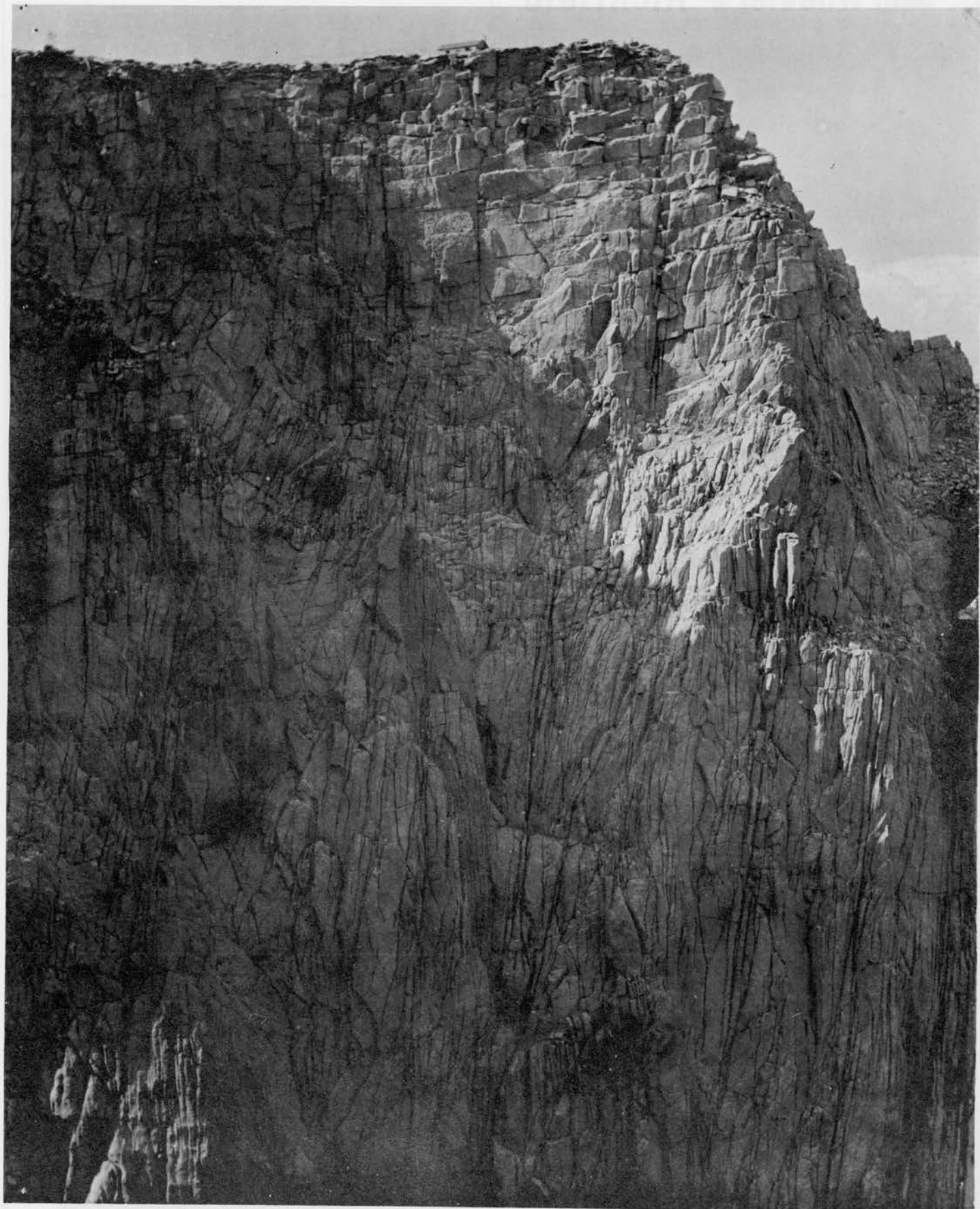
TECOPA

**DR. WINFRED ZIMMERLY
 DR. WALTER WILSON**



**220 No. Main
 LONE PINE**

Phone TR 6-2766



South side of Mt. Whitney.



Wheeler's Richfield Independence

HAND POLISHED ROCK JEWELRY
COMPLETE LAPIDARY
SUPPLIES

ALL BRANDS OF OIL
AND BLUE CHIP STAMP'S



Best Wishes

to the
LONE PINE
STAMPEDE
from
INDEPENDENCE
Lion's Club



Member California Land Title Association

Congratulations on a fine
local celebration from
the T.I. Staff.

Title Insurance and Trust Company

224 N. EDWARDS STREET

INDEPENDENCE, CALIFORNIA

THOMAS D. STOCKTON
Manager

KRATER'S INSURANCE AGENCY

ALL TYPES OF INSURANCE

LIFE	AUTO
FIRE	TRAVEL
GLASS	BURGLARY
LIABILITY	SURETY BONDS

NOTARY PUBLIC

REAL ESTATE BROKER

Alex C. Krater

TR 8-2901

149 N. Edwards St

Independence, California



MAIRS' MART

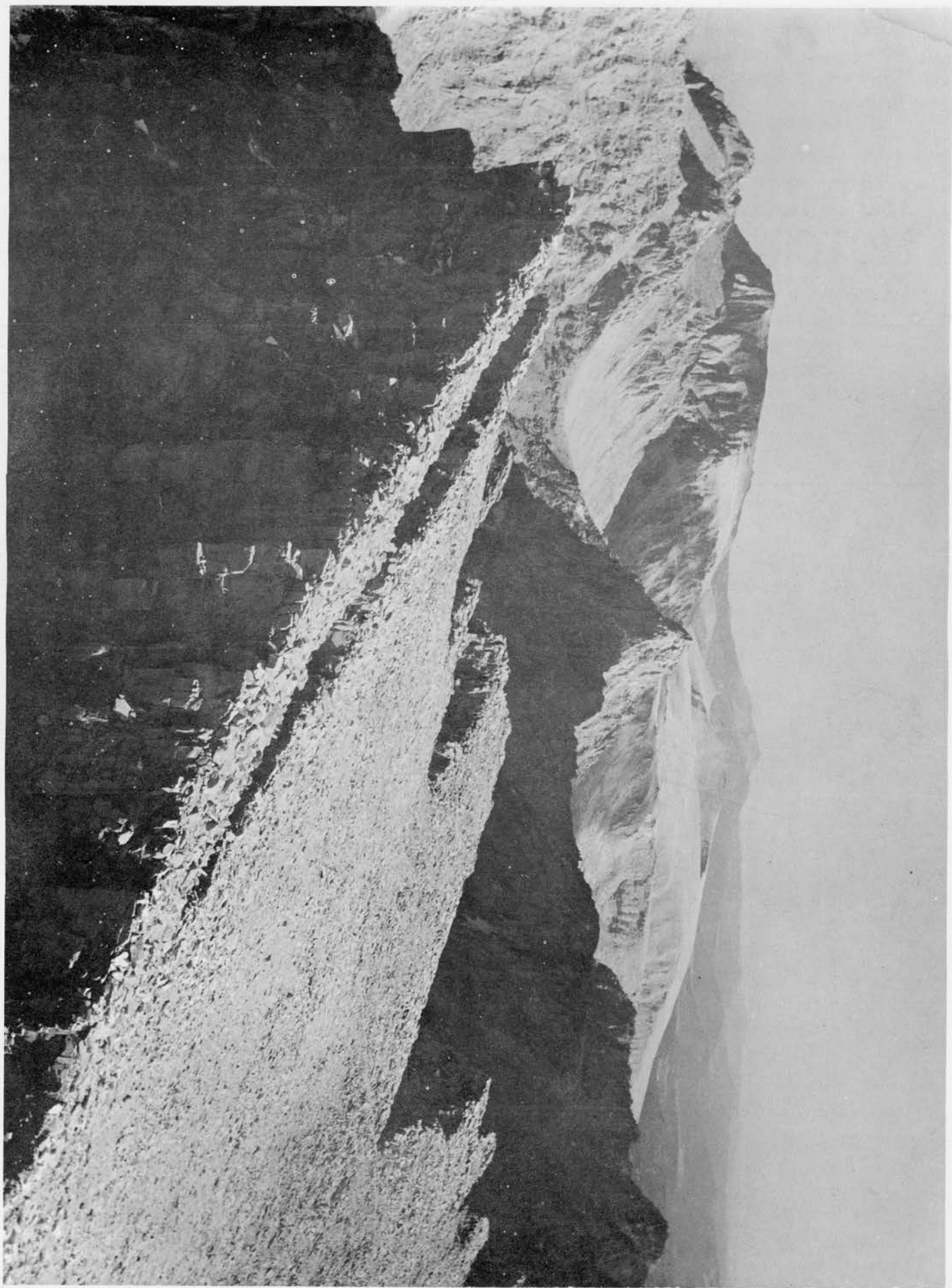
and GENERAL STORE
INDEPENDENCE

Fisherman's Headquarters

TOYS
YARN
MEATS
GIFTS
YARDAGE
SWEATERS
GROCERIES
SPORTING GOODS

*The Most Complete
Store in the Valley*

Looking south from summit of Mt. Whitney.



BEER
POOL
CARDS
EATS



VALLEY CLUB & CAFE

Amusement Center

BISHOP, CALIF.

LUTHER MOTORS

187 West Line St.
BISHOP, CALIF.

- Chrysler
- Dodge
- Plymouth

CHAS. E. LUTHER
Business UP 3-3575
Home UP 2-6141

RAINBOW

COCKTAILS
COORS ON TAP

Bishop, Calif.

OUR BUSINESS IS TO KEEP YOU IN GOOD SPIRITS

SIERRA Liquor Store

ICE CUBES
LIQUORS AT
L.A. PRICES

137 N. Main BISHOP

UPton 2-4871

MODE O' DAY

LINGERIE

DRESSES
SPORTSWEAR

ACCESSORIES

Phone: UP 2-9131

162 W. LINE ST.
BISHOP

COMPLETE BODY, FENDER REPAIR

RADIATORS
REPAIRED

24-hour
low service

UPton 2-2221

INYO-MONG BODY SHOP

387 N. WARREN, BISHOP, CALIF.

H. J. Wilkinson



BREAKFAST • LUNCH • DINNER

Walt's Kitchen

Home Cooked Food Is Our Specialty

281 N. MAIN • BISHOP, CALIFORNIA

Paul A. Ziegler, Inc.

310 South Main • BISHOP, CALIF.

UPton 2-4511

Ford



Jim Nikolaus

GLACIER SERVICE

ON U.S. 395 & 6
AT INTERSECTION OF GLACIER
LODGE ROAD



BIG
PINE
CALIF.



Buck's Store

UPton 3-3939

- SHOES FOR THE ENTIRE FAMILY
- MEN'S AND BOY'S WEAR

275 N. Main • BISHOP, CALIF.

Lester E. Buck, Owner

Welcome to the LONE PINE STAMPEDE

OWENS VALLEY GRANGE 808

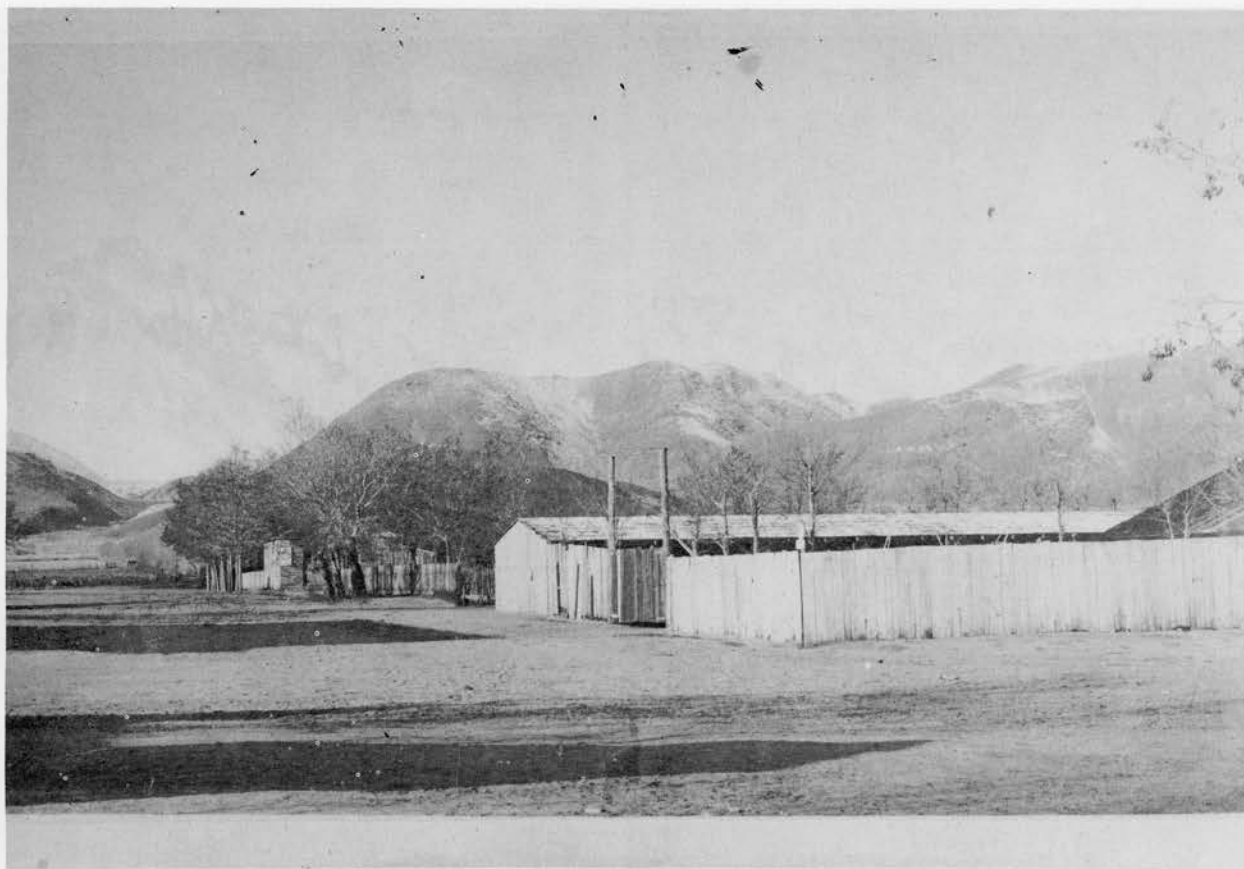
We Welcome New Members

BEST WISHES

to the
LONE PINE
STAMPEDE

Chalfant Press, INC.
BISHOP - LONE PINE





Dodge Livery Stables, now site of Rogers Market, Corner Bush and Main St.



A celebration at Lone Pine Plaza in 1895.

Ray's Den Motel

PHONE
TR 8-2597

K.F. RANDOLPH, Prop.

AIR CONDITIONED
PANEL-RAY HEAT
405 N. EDWARDS
INDEPENDENCE, CALIF.

INDEPENDENT GARAGE

COMPLETE MOTOR OVERHAUL

SERVICE FOR ALL MAKES
CARS AND TRUCKS

"PEE WEE" MATTHEWS

PHONE TR 8-5351

204 SOUTH EDWARDS INDEPENDENCE, CALIFORNIA



PINES CAFE

104 SOUTH EDWARDS
INDEPENDENCE, CALIF.

Dining Room • Cocktail Lounge

TR 82-1466



ECON-O-BLEND

7 Grades - 7 Prices

JIM DAVIS

Hancock Service

INDEPENDENCE, CALIF

GATES DEALER - Tires & Accessories

TR 8-5061

Bob Whites FLYING SERVICE

FLYING TO MONACHE AND TUNNEL MEADOWS
FOR HUNTING AND FISHING... SINCE 1945

Fly to... TUNNEL AIR CAMP

In A New Cessna 180

Where Saddle and Pack Stock Is Available for Trips to...

- ROCKY BASIN LAKES
- KERN RIVER
- GOLDEN TROUT CREEK
- ROCK CREEK

Packer and Guide Service Available

CAMPsites • TENTS • COTS
FOR RENT AT TUNNEL AIR CAMP, BY DAY OR WEEK

ELEVATION 9100
ON SOUTH FORK OF KERN RIVER

LONE PINE AIRPORT

Phone TR 6-2782

Lone Pine, Calif.



Wm. S. Hoffman

General Contractor

- REMODELING
- ADDITIONS
- CABINETWORK

*For estimate
or further
information call*

LONE PINE TR 6-4056

*Success to the
Lone Pine
Stampede*



DR. AND MRS. DOUGLAS DYER

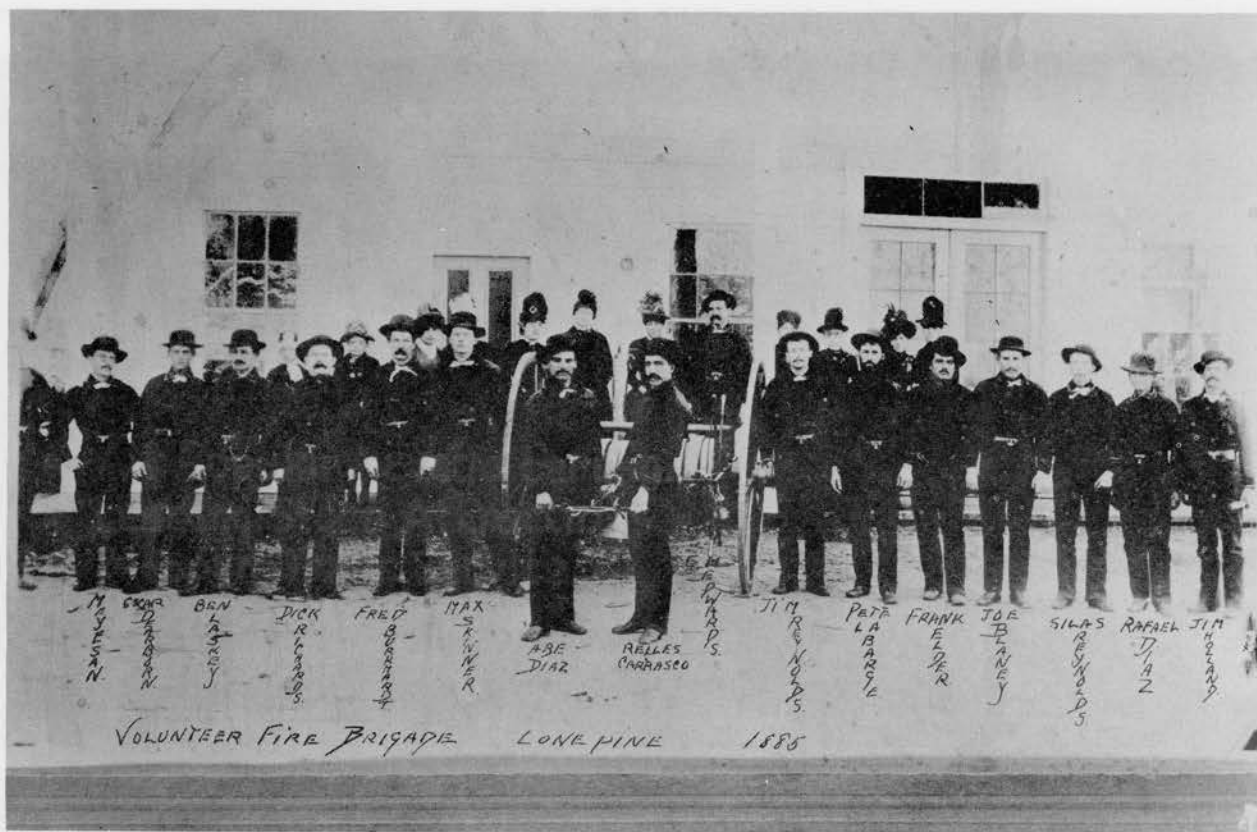


- Air Conditioned
- TV In All Rooms
- Fish Frozen Free

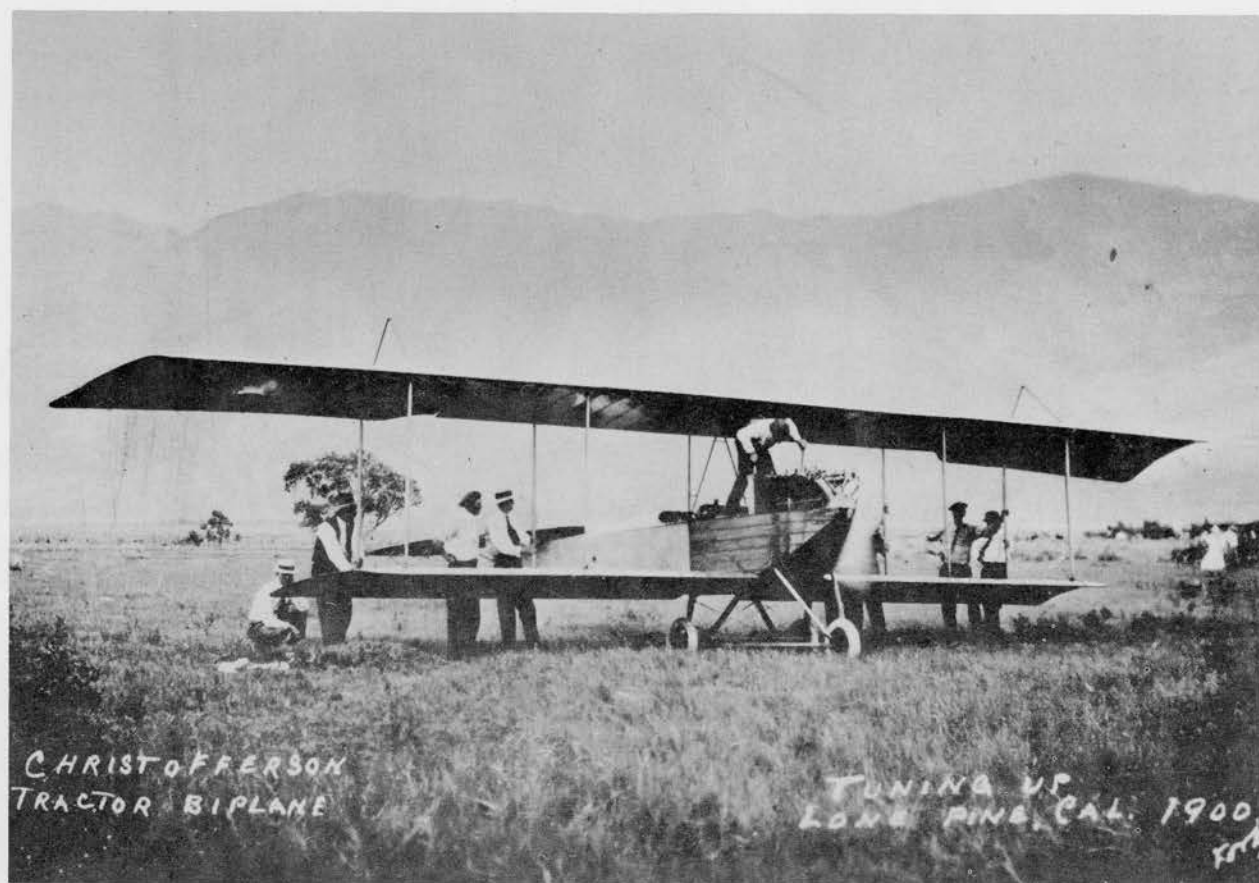


Your hosts -

"RED" and "ZEL" BUTLER... Phone TR 6-2427
305 N. Main Lone Pine



Lone Pine Volunteer Fire Brigade 1885



First airplane flight over Mt. Whitney. Lottie Arcularius collection, Bishop.

ROGERS MARKET

QUALITY MEATS

GROCERIES

PRODUCE

BEER - WINE
& SUNDRIES

203 NORTH MAIN

LONE PINE, CALIFORNIA



ROSSI'S

**CAFE AND
TAVERN**

LONE PINE

featuring

BROASTED CHICKEN

Breakfast • Lunch • Dinner



*Best Wishes to
the Lone Pine Stampede*

DON H. TERRY

Distributor

STANDARD OIL
PRODUCTS



TR 6-2901
LONE PINE

GEORGE'S *Liquor* STORE



BEER
WINE
LIQUOR

"Bud" Slater - Charles Mates

150 South Main
LONE PINE

*Prescription
Service*



LONE PINE DRUG STORE

Margaret & Ben Baker

24-HOUR EMERGENCY SERVICE

Phone TR 6-2321

Welcome To A Western
Celebration- THE STAMPEDE

480 S. Main

Lone Pine

Off the Highway!

LONE PINE, CALIFORNIA



"At the Foot of Mt. Whitney"

FIRST CHOICE!



- ✓ DELUXE ACCOMMODATIONS
- ✓ 1/2-BLOCK WEST OF HIGHWAY
- ✓ SINGLES - DOUBLES - KITCHEN APTS.
- ✓ TELEVISION, HI - FI
- ✓ COURTESY COFFEE IN ROOMS



Phone TR 6-4711

ROY AND MILDRED OLSON
OWNERS-OPERATORS
P.O. Box 55 - LONE PINE

"EVERY SERVICE FOR THE TOURIST AND SPORTSMAN"



Last run of the "Sage Brush Rocket" on narrow guage from Lone Pine.—Phillips Camera Photo.



Natural Soda Products Plant, now dismantled.—Phillips Camera Photo.

MOTEL

COFFEE SHOP

76 Bob Bell
UNION OIL DEALER

CENTER & EDWARDS ST.
INDEPENDENCE

TR 8-2861



Bernadine's
HAIR DESIGNS
BERNADINE RUIZ
Phone TR6-6291
LONE PINE

Compliments
of

HAROLD L. YEATS
LONE PINE



the **CORRAL
BAR**

LONE PINE, CALIF.

HISTORIC
BACK BAR FROM THE
GHOST TOWN OF SKIDOO

*The only bar in the world
where you can see Mt. Whitney*



**SUBURBAN
GAS**

OF LONE PINE

800 S. MAIN ST.
LONE PINE, CALIF.

Phone TR6-3201

FORD THUNDERBIRD MERCURY

FALCON FORD TRUCKS

YOUR
**AUTHORIZED
DEALER**

ELLIS MOTORS

335 Main St.

TR 6-2611

LONE PINE



Authorized Sales And Service

SHELL PRODUCTS

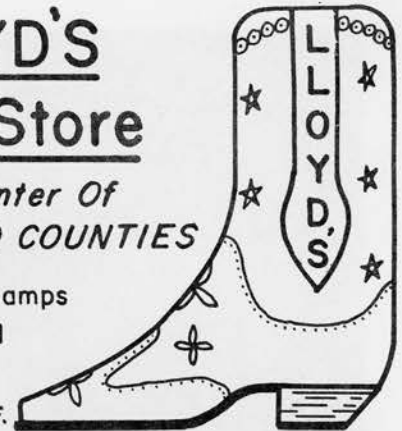


**LLOYD'S
Shoe Store**

*Style Center Of
INYO-MONO COUNTIES*

S. & H. Green Stamps
BANKAmericard

135 N Main
LONE PINE, CALIF.



YARDS
J.W. COPELAND OF CALIFORNIA

RETAIL LUMBER AND



BUILDING MATERIALS

COMPLETE FINANCING PLANS

ADD-ON

\$240 For
8 Months

BUDGET

\$3500 For
60 Months

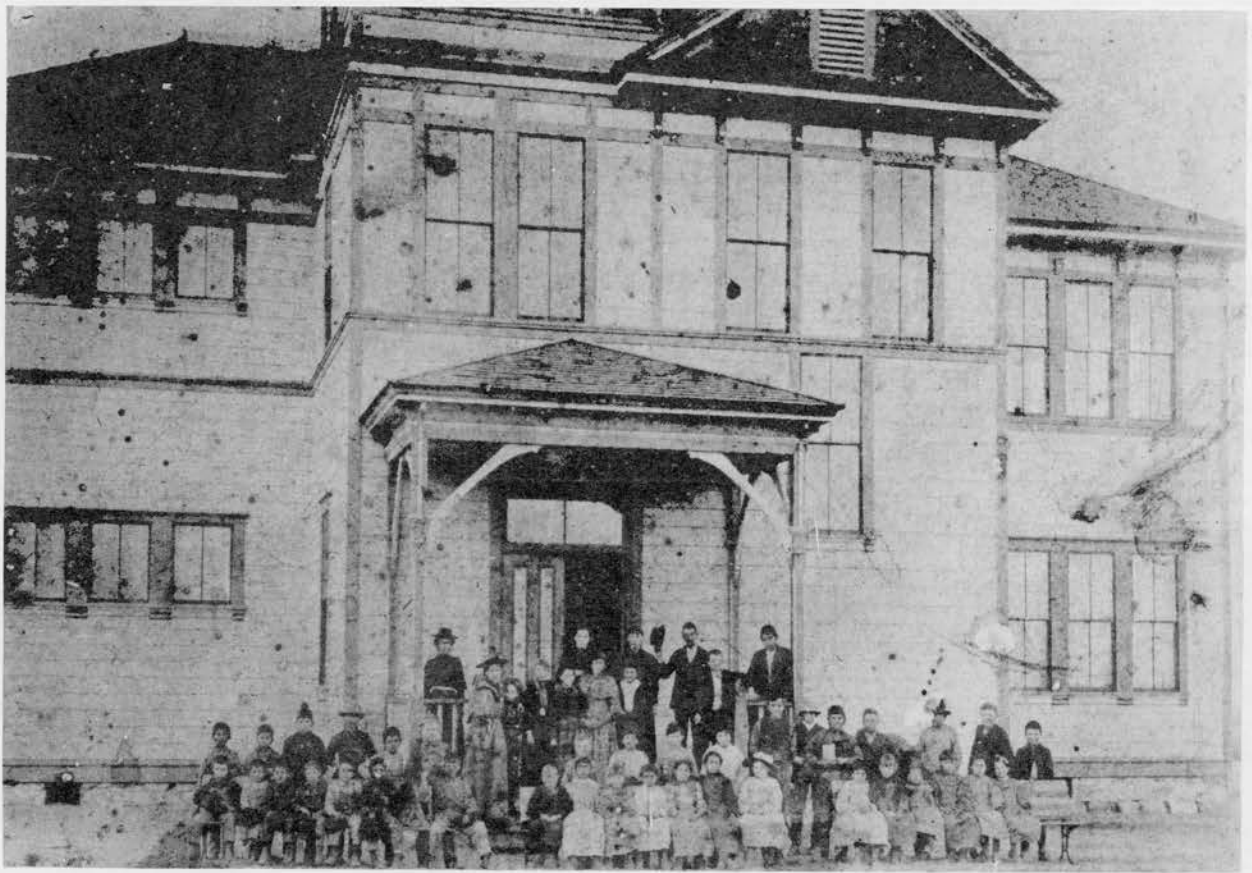
COTTAGE

\$5000 For
7 Years

NO DOWN PAYMENT

Jack Hastings
Mgr. Lone Pine

Lone Pine, Calif.
TR6-2041



Old Lone Pine School



Lone Pine Main St., looking north. Note stream running across street.



MI-LADY'S DRESS SHOP

and SMALL FRY

Women's and Children's Apparel

121 N. MAIN LONE PINE

Phone TR6-3576



IVEY AUTO PARTS

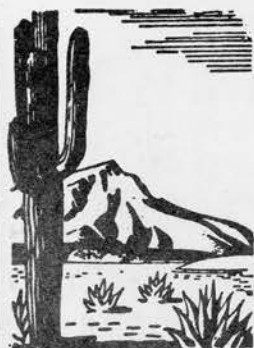
AUTO SUPPLIES & ACCESSORIES

ORIGINAL EQUIPMENT PARTS

223 N. Main

Lone Pine, Calif.

Phone
TR 6-2241



Sierra Bar & Cafe Inc.

FINE CUISINE

"Where The
Valley People
Dine"

*Our
Specialty*
ITALIAN
DINNERS

STEAKS
CHOPS
CHICKEN

OPEN DAILY
11 A.M.

Phone

TR 6-8015

Carl Kountz - Owner

413 SOUTH MAIN

LONE PINE, CALIF.

MILLER'S CHEVROLET

LONE PINE

AUTHORIZED SALES & SERVICE

CHEVROLET
CARS & TRUCKS

CORVAIR
By CHEVROLET



Complete Auto and Truck Service
Facilities Body, Radiator and
Engine Repairing.... Auto Painting
Towing Service

330 NORTH MAIN · LONE PINE, CALIFORNIA

Best Wishes

to the

Lone Pine Stampede Committee

DR. AND MRS. D.L. CHRISTENSON



Padre Crowley points out to Dr. H. W. Deuker the inscription on the gourd which carried water from Lake Tulaingo to Bad Water, Death Valley, at "Wedding of the Waters" celebration.—Phillips Camera Photo.



WELCOME VISITORS!

to the
**LONE PINE
STAMPEDE**

*Southern Inyo
Chamber of Commerce*

C.P.S.

Music and Variety



INSTRUMENTS BOOKS
GIFTS NOVELTIES
SOUVENIRS



BOX 437 -- 132 N. MAIN STREET
LONE PINE, CALIFORNIA

RICHARD'S MOVING and STORAGE

462 W. Line St.

Bishop, Calif.

- Exclusive Sanitized* Vans and Equipment
- Certified Master Movers
- Expert "Uni-Packing"
- Personalized Advice of Moving Consultant Bette Malone*
- Foreign Service Via Sea or Air
- "Safe-Guard" Moving Service for Special Shipments

*REG. U.S. PAT. OFF.



MOVING WITH CARE . . . EVERYWHERE®.

Upton 3-3816 Eves. Upton 3-3817

Welcome

To Lone Pine
And Western Days Celebration!

SEE OUR COMPLETE
LINE OF NAME BRANDS
WESTERN WEAR
FOR THE ENTIRE FAMILY

Stetson PENDLETON
LEVI
Lee WRANGLER
ACME BOOTS

Ship and Shore
Guild and Minnetonka Moccasins
AUTHENTIC INDIAN CRAFT & GIFTS
OUR 18th YEAR IN LONE PINE

INDIAN

Trading Post

Main and Pine TR6-3691



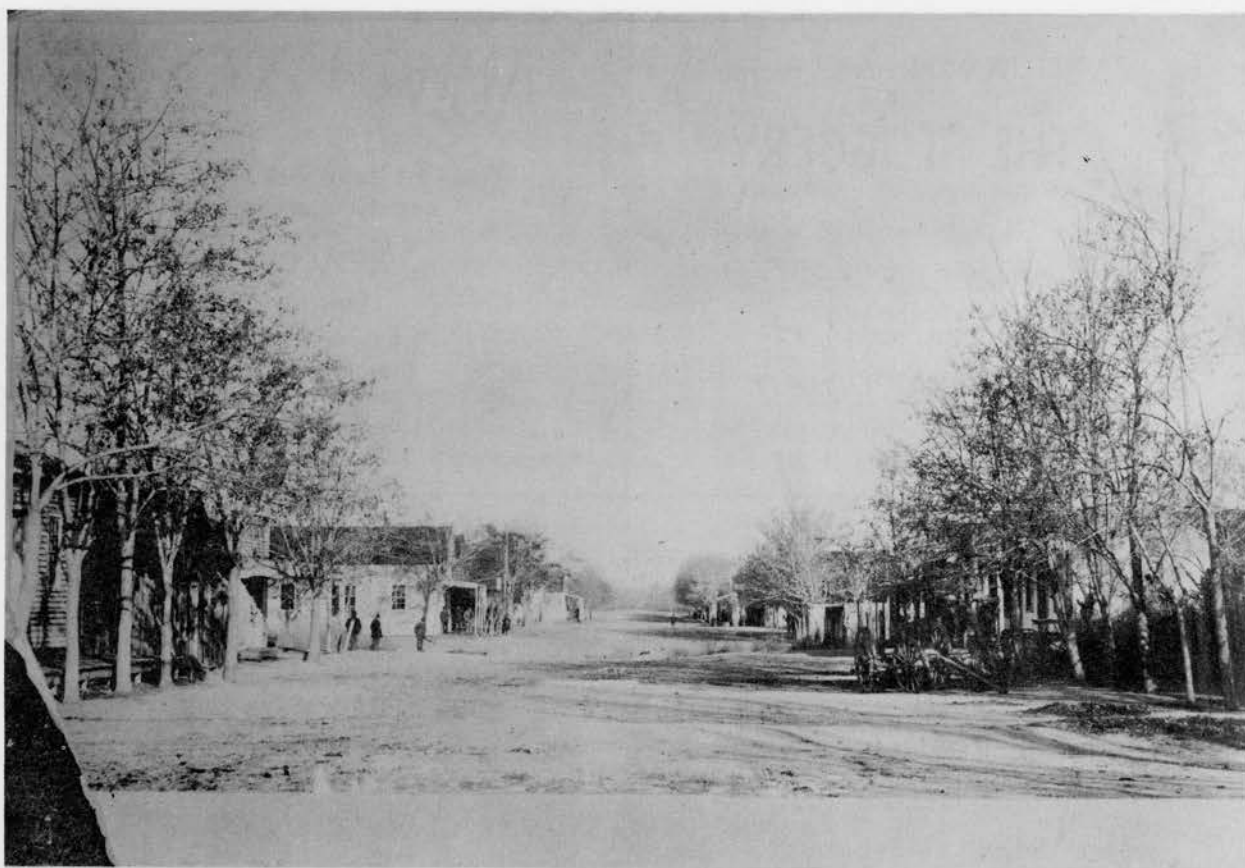
H.C. Barbour

CHEVRON
SERVICE

U.S. 395 & 6
South of Lone Pine

COMPLETE LINE
OF STANDARD
OIL PRODUCTS

OPEN 24 HOURS



Main St., Lone Pine looking north. Large building on left was Lottie's Rooming House. Extreme left now Indian Trading Post, corner Whitney Portal Rd. and Main St.



The old Begole building, now Shultz building, recently occupied by Dr. Don Christenson. Chas. Begole was one of the first Lone Pine settlers and helped lay out the townsite.



WESTERN WEAR FOR ALL THE FAMILY

at
THE TOGGERY
115 N. MAIN BISHOP
featuring

HYER, JUSTIN, ACME BOOTS-STETSON,
RESISTALL, U-ROLL-IT HATS
H-BAR-C SHIRTS, PANTS, JACKETS

SUCCESS TO YOUR RODEO

SUPPORT OUR ANNUAL TRI-COUNTY
FAIR, TO BE HELD IN BISHOP AUG. 30-31, SEPT. 1-2

Why PAY RENT?

See Us

We can help you own your OWN
beautiful, modern mobile home

New or Used

BELOW L.A. PRICES!

Ask Our Customers

BANK OF AMERICA FINANCING

BISHOP MOBILE HOMES

Accessories & Service BISHOP UPTon 2-7911

PERRY MOTORS

637 North Main Street
Bishop, California

AUTHORIZED SALES & SERVICE

Pontiac ÷ Rambler

Buick ÷ GMC

International Harvester

DICK PERRY

UPTON 2-4141

**CALIFORNIA INTERSTATE
TELEPHONE CO.**

"Keep in touch with
a long distance call"

SALUTING THE TOWN
OF LONE PINE AND
HER 1963 STAMPEDE

Marking our 51st
Anniversary

BEST WISHES



to our
Lone
Pine
Neighbors
as they
celebrate
their
annual
Stampede



McMurry's

Cafe
BISHOP

RICHARD'S Furniture
NEW & USED



Early American and
Modern Furniture
Carpeting
Appliances
Accessories

"THE STORE WHERE YOU SAVE!"

OPEN MON.-SAT.
9 A.M.-5:30 P.M.

Call UPTon 3-3816



462 W. Line, Bishop



Trail scene just below Whitney Pass — elevation 13,600 ft.

LASKY'S RADIO & TV

SALES & SERVICE

ZENITH

238 N. Main Lone Pine

Phone TR6-3031

COOLED BY REFRIGERATION T.V. ELECTRIC HEAT

In the shadow of famed Mt. Whitney

The TRAILS MOTEL

HEATED POOL

Hunting & Fishing Information

Miss Bartha W. Price
Manager

MAIN ST - LONE PINE

CHEVRON

GASOLINE

Complete
Lubrication

Atlas Tires and Batteries
Recapping
Road Service - Accessories

FEAR'S CHEVRON SERVICE

Mr. & Mrs. Ralph Fear

Junction U. S. Hwy. 395 - U. S. Hwy. 6
and Whitney Portal Road, Lone Pine

Call
Lone Pine
TR6-2851



VETERANS OF FOREIGN WARS

TURNER BARNES POST
8036 & AUXILIARY



We Have Been Around-

"From Wagon Trails To Jet Trails"

Phone TRipoli 62461
LONE PINE, CALIF.

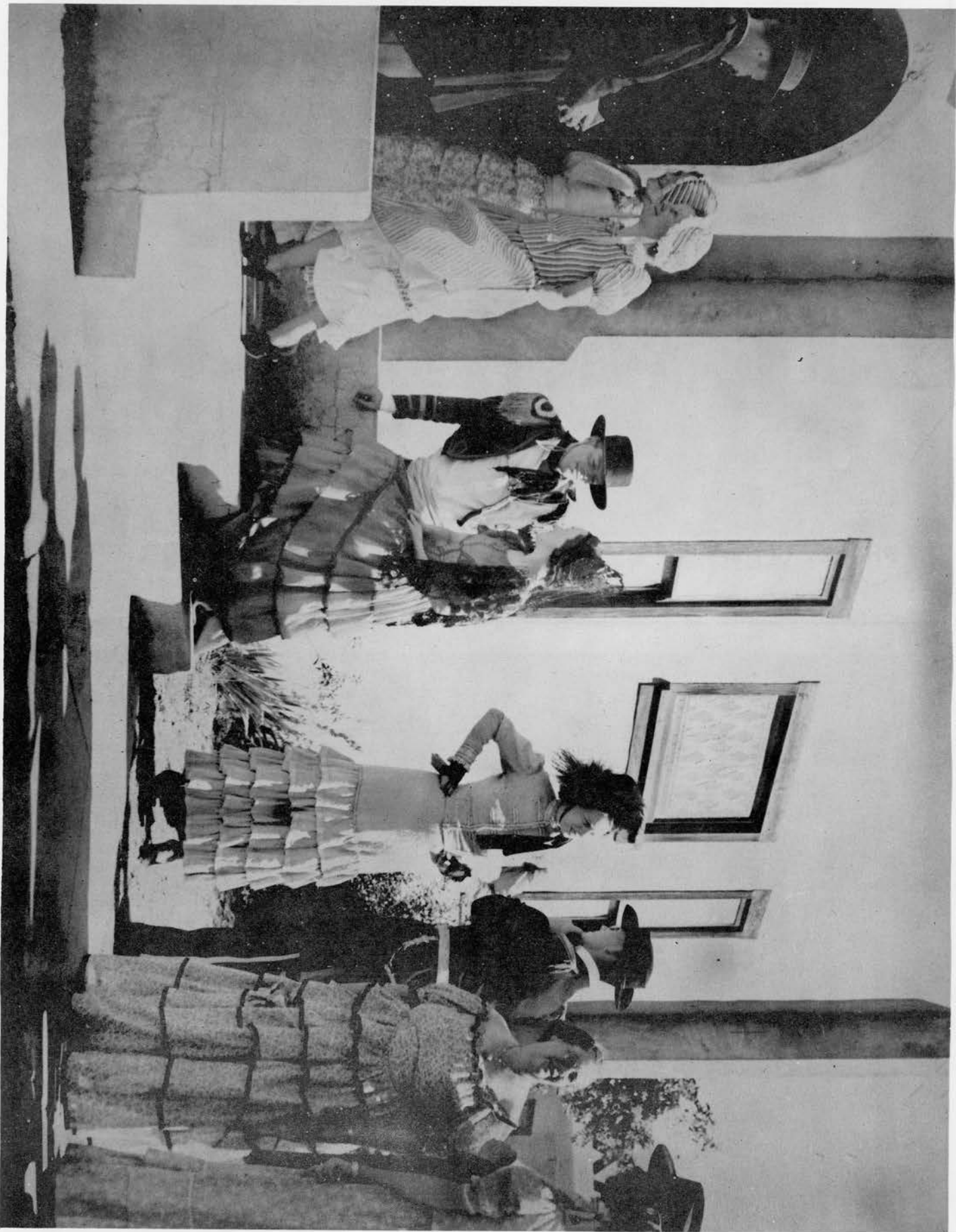
Sportsman Cafe

LONE PINE

Visit

- MT. WHITNEY
- ALABAMA HILLS
via Movie Lane
Road
- DEATH VALLEY

Unique •• Scenic •• Photogenic



Lone Pine celebrates "Wedding of the Waters" 1938.—Phillips Camera Photo.

MILOVICH BROS. INC.

SERVING INYO & MONO COUNTY
SHELL OIL PRODUCTS
CUMMINGS SALES & SERVICE
GOODYEAR TIRES & RECAPPING



CUMMINS ENGINES

PHONE : UPton 3-3524

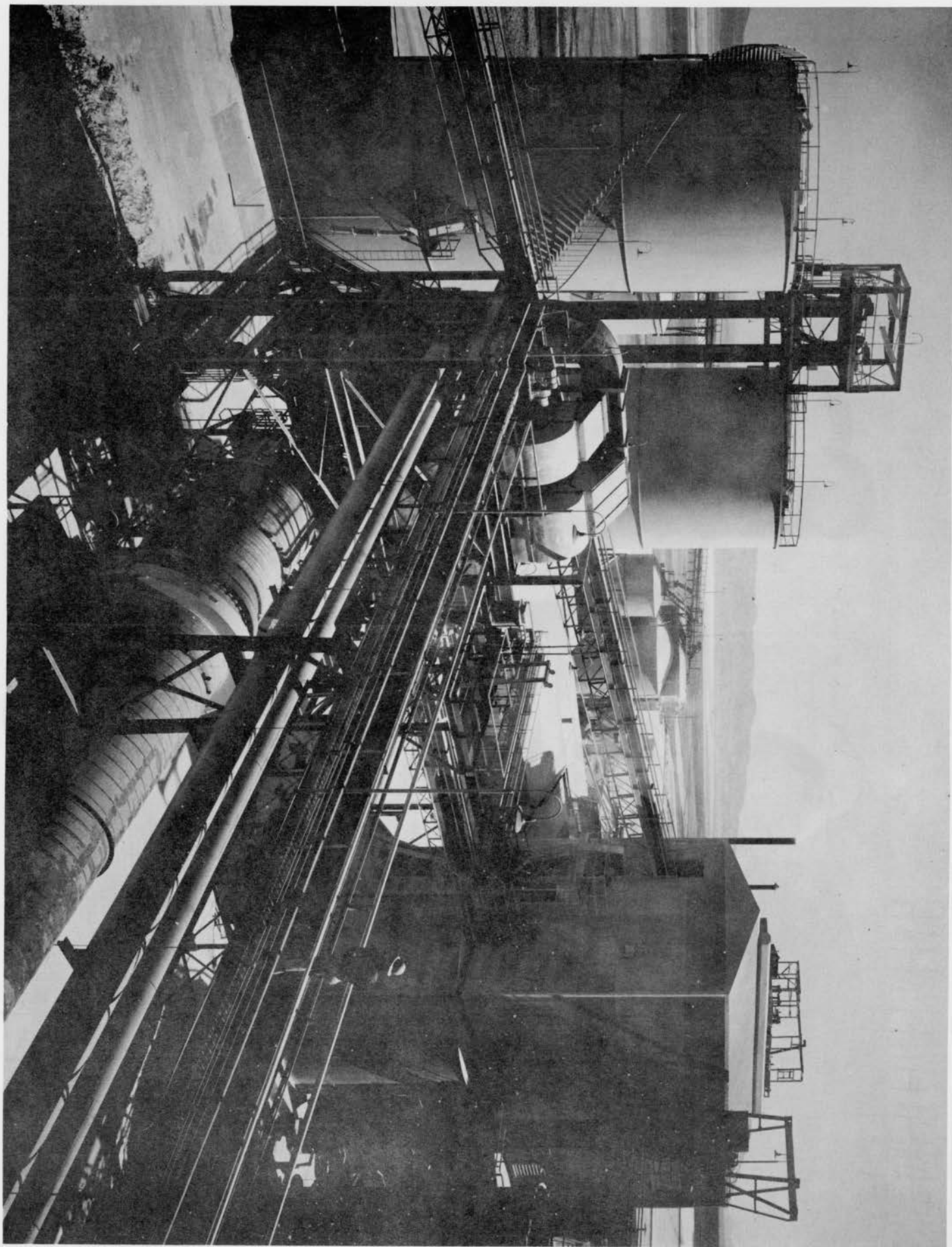
BOX 222

BISHOP, CALIF.

JOSEPHS
PIONEER PROGRESSIVE MERCHANTS - EST. 1895

Retail & Wholesale Groceries - Dry Goods

BISHOP
and
LONE PINE



Pittsburgh Plate Glass Co. plant at Bartlett.

LIKE WESTERN ENTERTAINMENT?

Then We Invite You And Your
Stampede Guests To Pay Us
A Visit.

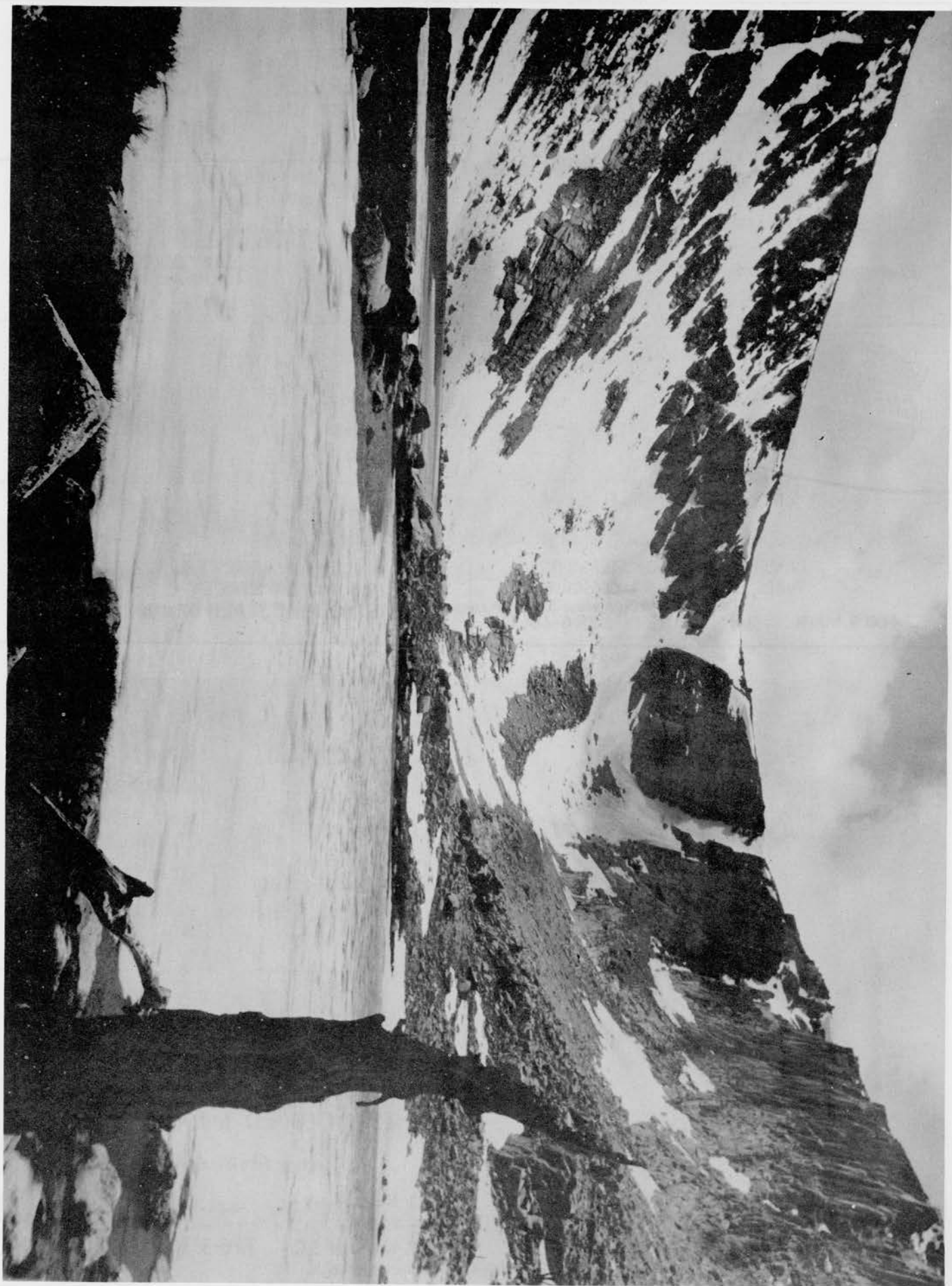
- All Popular Nevada Gaming.
- Leading Stage Attractions.
- 24-Hour Dining Service.
- Gobs Of Slots.
- Deluxe Motel Accommodations

E Capitan

LODGE & CASINO

HAWTHORNE, NEVADA





Cottonwood Lakes

"Where the West greets the Rest"

The RANCH MOTEL

ALL ELECTRIC HEAT
AIR CONDITIONED

2 Blocks Off Highway

KITCHENS AVAILABLE



Elmer and Billie Schroeder
LONE PINE, CALIF.

P.O. Box 266
TR 6-4306



Carrasco's
**RICHFIELD
SERVICE**

1202 So. Main

**TRAILER
COURT**

LONE PINE
Phone TR6-4006

*Make every occasion a pleasant
memory with gifts of distinction*

LORENE'S

GIFT & ROCK SHOP
Leo and Lorene Jones

P.O. BOX 506
235 SO. MAIN ST

LONE PINE, CALIF.

TR 6-2472



• • • • •

Dale's

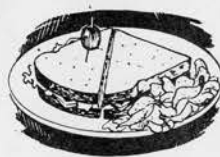
CHEVRON SERVICE

STANDARD OIL PRODUCTS

plus

COMPLETE LINE OF ATLAS TIRES
TUBES, BATTERIES & ACCESSORIES

460 S. MAIN LONE PINE TR 6-4042



Lee's

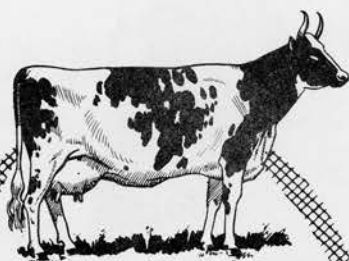
**DELICATESSEN
and CAFE**

LONE PINE

SIERRA BARBER SHOP



BAILEY McROBERTS
105 WATER STREET
LONE PINE, CALIFORNIA



You
Always Get
QUALITY
Milk and
Ice Cream

from

LONE PINE DAIRY

"The Schous"

TR 6-3271



HANCOCK'S
Auto Repair

Complete
AUTOMOTIVE SERVICE

AUTOMATIC
TRANSMISSION

WHEEL ALIGNMENT
RADIATORS

235 N. Main
P.O. Box 671
LONE PINE, CALIF.

PHONE: TR6-3601
Day or Night

—÷— **Nogales** —÷— **CLUB & CAFE**

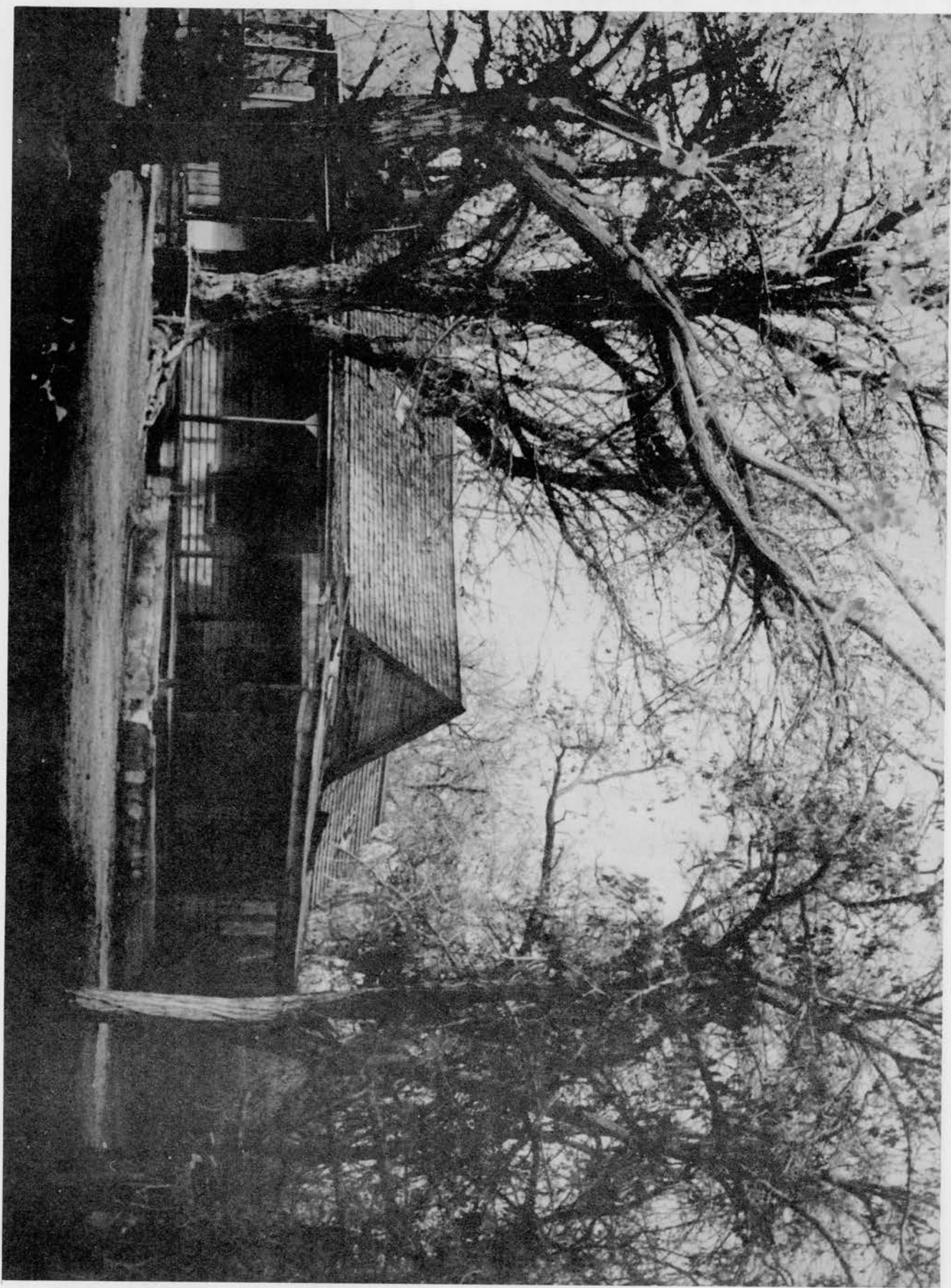
HOME COOKED MEXICAN DISHES

Serving Fine Mexican Dinners

Art Nogales
Manager

107 N. MAIN ST. TR 6-3331

—÷—
Frances Ojeda
Chief Cook
LONE PINE



One of the most photographed houses outside of the Hollywood studios is this old home on the Anchor Ranch, south of Lone Pine.—Phillips Camera Photo.

The BISHOP BAKERY
125 North Main Bishop, California

The Home Of The Original
World Famous
SHEPHERDER BREAD

NOW OPERATED BY
HOLLAND-AMERICAN BAKERY

150 SOUTH MAIN · BISHOP, CALIFORNIA · UPTON 2-6791

Also Sold At
MAIRS' MART
INDEPENDENCE



UPTON 2-3077

Bobbie's TOTS-TO-TEENS
SPECIALIZING IN CHILDREN'S
and INFANTS CLOTHING

236 NORTH MAIN ST.
BISHOP, CALIF.

SIERRA FURNITURE CO.

NEW AND USED FURNITURE AND APPLIANCES

P. O. BOX 8 - BISHOP, CALIFORNIA

Phone: UPTON 2-3781

WALTER C. GETTS

NORTH MAIN ST. AT THE 'Y'

**LONE PINE
FEED & SUPPLY**

HAY - GRAIN
POULTRY SUPPLIES & EQUIP.
GARDEN TOOLS & SEEDS
FERTILIZERS & SPRAYS

Duane Rossi, Owner
840 S. Main St.
Lone Pine, Calif.

Also 237 South St., Bishop, Calif.

Compliments of
**HENRY F. GERFEN
REALTY**

380 N. MAIN ST. · BISHOP · UP 3-3332

SPORTSMAN LIQUOR STORE

and
— **DELICATESSEN** —
Drive In Parking

386 North Main

Bishop, Calif.

**Oyler-Wiley
MOTORS**



CHEVROLET



OLDSMOBILE



CADILLAC



USED CARS

**Parts
Sales & Service**

462 NORTH MAIN

BISHOP, CALIFORNIA

PIONEER HARDWARE

Paints · Hardware · Sporting Goods
Stockmen's Supplies

293 North Main ÷ Bishop, California

"Every thing for the Horseman's needs"

dealer for **TEX TAN**

C.P. ANDRE

UPTON 2-2031

**PRESCRIPTION
SPECIALISTS**

OWENS VALLEY DRUG CO.

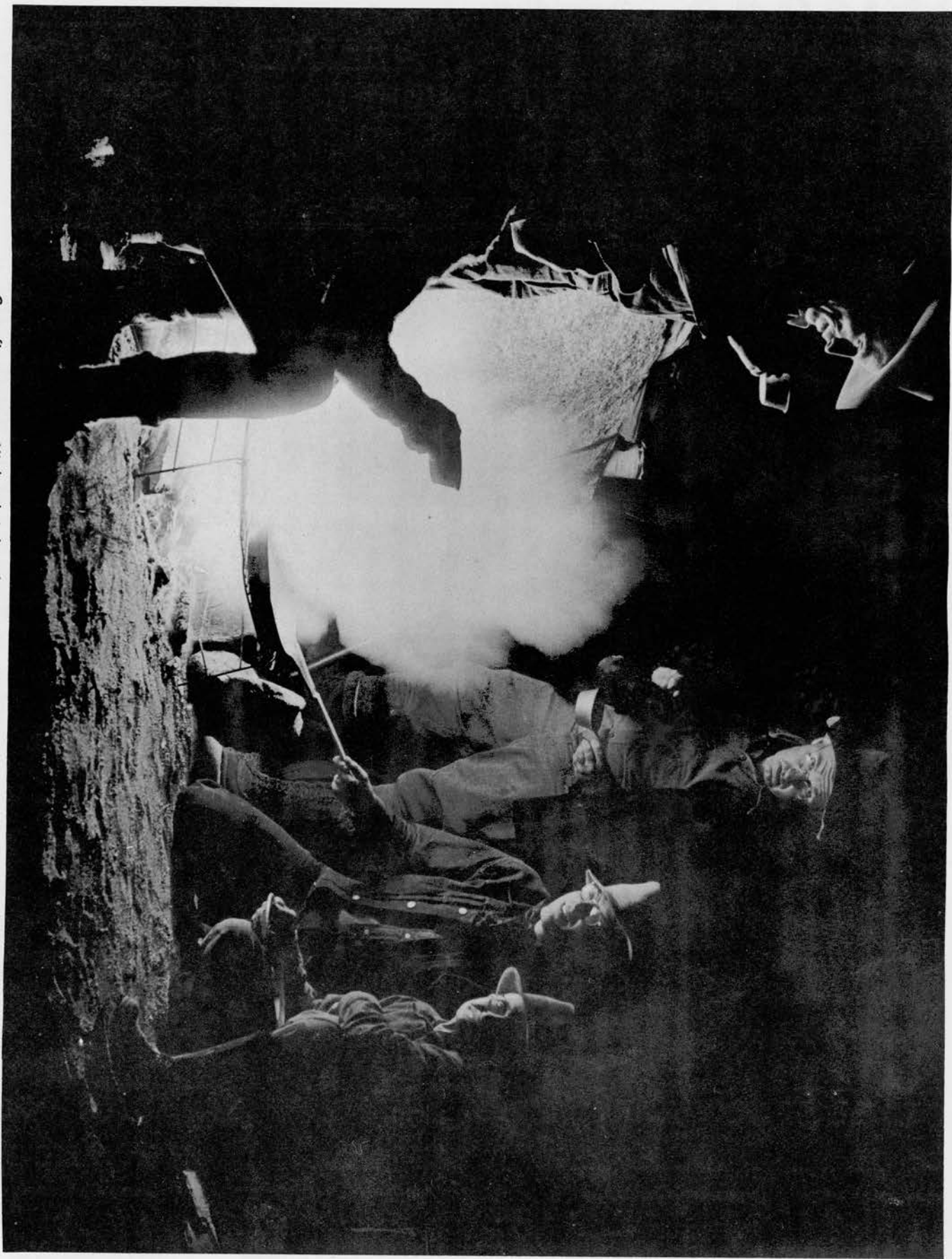
112 SOUTH MAIN ST.

BISHOP, CALIFORNIA

GREETING CARDS
COSMETICS
GIFTS

SICKROOM SUPPLIES
PRESCRIPTIONS
DRUGS

Upton 2-2901



Campfire scene at Hitchcock Lakes during "Wedding of the Waters" celebration. Left to right: Bob Crosby, Ted Cook, Father John J. Crowley, Jack Hopkins and Allan Ramsey. Phillips Camera Photo.

BISHOP BUILDING MATERIALS

*Pumice Blocks
Fireplaces
Cement
Steel*

1162 NORTH MAIN AT THE "Y"
P.O. Box 1013

UPTON 2-6431

Sierra Electric Motors

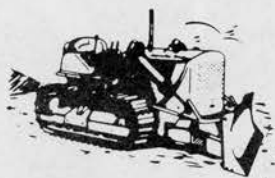
*Sale and service all makes motors,
generators, magnetic switches,
power tools, L.A. PRICES!*

*Complete stock of
G.E. and Emerson 1/4-1 H.P.
275 S. Main UP3-3164 BISHOP*

CRAWFORD RENTALS

444 SOUTH MAIN

BISHOP, CALIFORNIA



Call
UPTon
3-3845
OPEN DAILY

We Rent Anything!
FROM TRACTORS TO HAND TOOLS
IF We Don't Have It . . . WE'LL GET IT!

INYO - MONO Coca-Cola Bottling Company



**Distributors For Lucky Lager
BEER**

387 Hammond St.

UPTon 2-2021

Bishop

THE
Copper Kettle
COFFEE SHOP

KITTIE LEE INN
524 N. Main-BISHOP

CHARLIE'S ROOM
Cocktails

UPTon 3-3556

For
TYPEWRITERS
ADDING MACHINES
and
CASH REGISTERS

SOLD,
REPAIRED
and
EXCHANGED

UP 2-6361

Call
**Hank DeYoung
Enterprises**
174 W. Line, BISHOP

EASTERN SIERRA CO.

250 S. MAIN ST. BISHOP, CALIFORNIA
UPTON 2-2011

Distributor For
HIRAM WALKER · JIM BEAM

**OLYMPIA · COORS
& FALSTAFF BEERS**

I.S.C. & PETRI WINES

HARRISON'S *House of Music*

"Everything in Music"

CONN ORGANS · LESLIE SPEAKERS · PIANOS
SALES · SERVICE · INSTRUCTION

MUNTZ AUTO STEREO
for
HOME, CAR & BOAT
CONN BAND INSTRUMENTS

CASSIE HARRISON
BILL HARRISON

UPTON 3-3489
117 EAST LINE STREET
BISHOP, CALIFORNIA



Harry Reynolds Saloon



**O.K. Kelley
Service**



COMPLETE
AUTOMOTIVE
SERVICE

24-HOUR TOWING
ROAD SERVICE

634 So. Edwards
INDEPENDENCE, CALIF.

Phone TR 8-2611



SEQUOIA-KINGS PACK TRAINS

Shepherd Pass
Kearsarge Pass
Sawmill Pass
Taboose Pass

Box 176
INDEPENDENCE
CALIFORNIA

Fishing Camping Scenery

**ECONOMY
MOTOR PARTS, INC.**

AUTO PARTS,
GLASS and
SERVICE

Jeep
VEHICLES



Route 1, Box 26
So. Main. St.
UP 2-6581
BISHOP,
CALIF.

Chuck Perry

Jim Clark

Mary Lou's Worms

BAIT & TACKLE
by Chuck
Big Pine, Calif.

KODAK SUPPLIES NOVELTIES SPORTING GOODS

Camera Art Shop

Sportsmans Headquarters

Edith May Mendenhall, Prop.

Phone WE 8-2274

Big Pine, Calif.

INYO CAFE

*home
made*

SAUSAGE
PIES
BREAD, etc.



Phone TR 8-5332

INDEPENDENCE

BRISTLECONE

BIG PINE, CALIFORNIA

Aberdeen Resort

14 MILES NORTH OF INDEPENDENCE

DUCKS
GEESE
QUAIL

CABINS &
TRAILER
SPACE

TROUT
DEER
PHEASANT

Telephone
TR 8-2852

Ralph & Lillian McClane

Post Office Box 58
Via Big Pine, California

LICENSED CONTRACTOR • PLUMBING & TRAILER SUPPLIES

C. (Chick) B. ARNOLD PLUMBING

336 North Warren
BISHOP, CALIF.

Residence
UPton 2-8807

Office
UPton 2-8806

A Good Night's Rest—

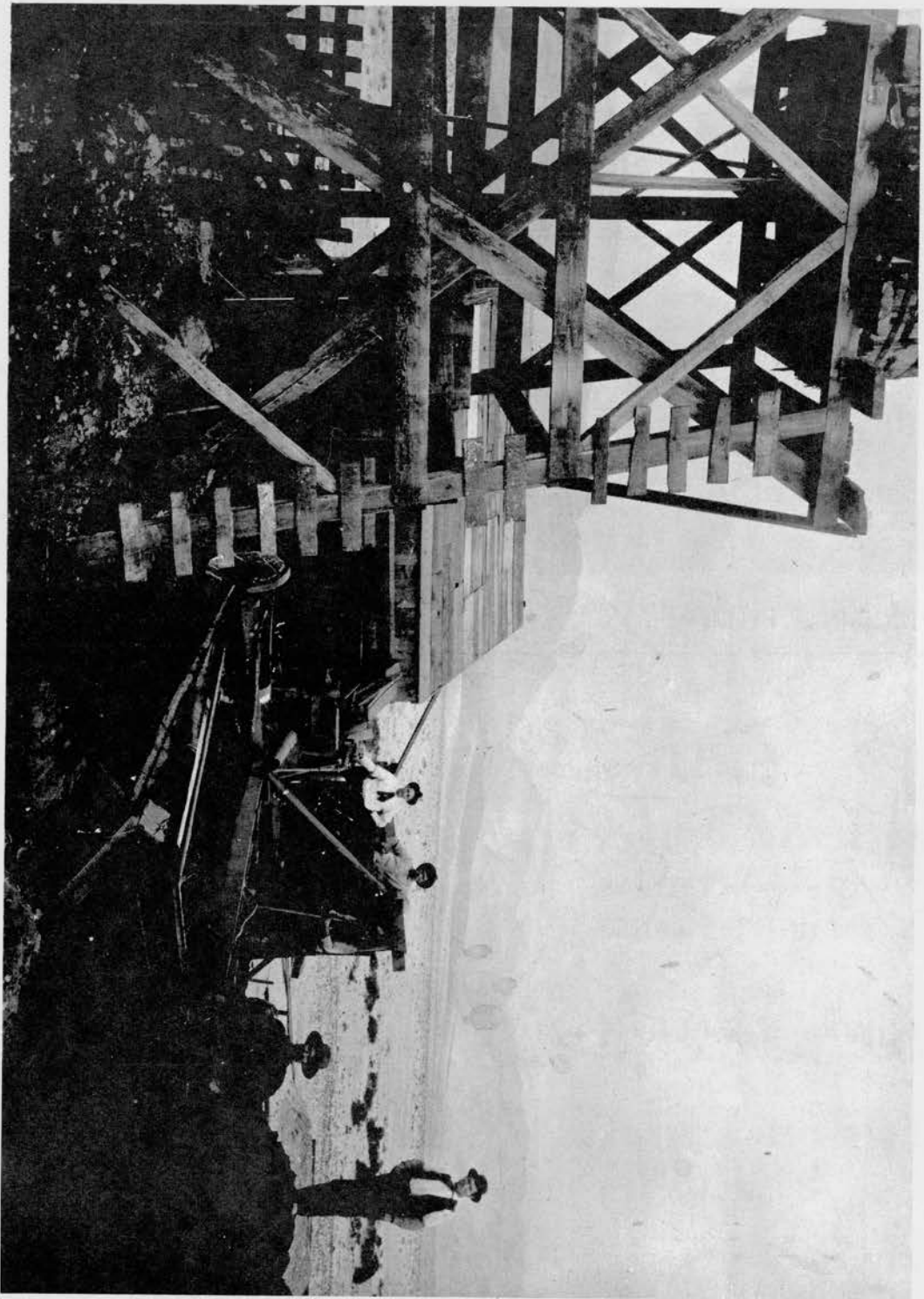
CAN ADD SPARKLE TO YOUR VACATION

Stop at the . . . **BIG PINE MOTEL**
WHERE YOUR COMFORTS ARE OUR EVERY AIM!

START REFRESHED TO
The Backcountry
Bristlecone Area
Eureka Sand Dunes
Death Valley

ON U.S. 395 & 6
BIG PINE, CALIF.





Old I.D. Soda works at Keeler early 1900.

Compliments of

Dr. O.W. Rysse
CHIROPRACTOR

Lone Pine, Calif.

Rich's SPORTING GOODS
and LIQUOR STORE
C.M. "Rich" RICHARDS
"We keep you in good spirits"
Phone
TR 6-4561
220 SOUTH MAIN ST.
LONE PINE, CALIF.

Edna's BEAUTY SALON
EDNA GILLASPIE
Specialists In Hair Styling, Shaping
and Permanent Waving
Bus. Phone TR6-4871
Res. Phone TR6-2686
130 BUSH ST.
LONE PINE

THELMA'S CAFE

Why Not Eat Here?
The Truckdrivers Do!
OPEN 24 HOURS EXCEPT SUN.
LONE PINE

QUIET
COMFORTABLE
OFF HIGHWAY

TR 6-3231
BOX 568

**Timberline
Motel**



215 E. POST
LONE PINE
*Turn at Union Station
1/2 Block East*

BETTY & JOHNNY HELMER

Owens Valley
LAUNDROMAT
Box 175
LONE PINE, CALIF.



TIRES
TUBES

BURKHARDT'S
UNION SERVICE STATION
MAIN & POST
Union 76 Tires
Firestone Products
LONE PINE
BATTERIES
ACCESSORIES

Bank of America
NATIONAL TRUST AND SAVINGS ASSOCIATION
LONE PINE BRANCH

United States Depository

SAFE DEPOSIT BOXES
ESCROWS

400 NORTH MAIN ST.
LONE PINE, CALIFORNIA

EDWARD C. JACOBY
PUBLIC ACCOUNTANT
P.O. Box 52
LONE PINE, CALIF.
TRinity
6-2081

R.F. OYLER
INSURANCE

INSURANCE DESIGNED FOR
PROTECTION - ENGINEERED
FOR ECONOMY

REAL ESTATE BROKER

120 N. MAIN

LONE PINE, CALIF.

* * S U C C E S S * * *

1963

* * L O N E P I N E S T A M P E D E ! !

from MERCHANTS and FRIENDS of SOUTHERN INYO COUNTY:

CARTAGO

Mason Trucking Company
Jack Heinen Enterprises
Jim Riley's Richfield Service Station & Garage
Mr. & Mrs. Ed Diehl's La Casa Cartago Rest Home
Bill Thornburgh's Cabin Bar Ranch
Hazel's Cabin Cafe

OLANCHA

Mark Lacy & Son Ranch
Reeve's Shell Service Station
Castner's Texaco Service
Ranch House Cafe & Cottonwood Pack Station
Bob & Gerry Galloway's Market
Terry & Hazel West's Mobil Service Station
George DuFault's Chevron Station & Owens Lake Garage
George Brown Ranch
William Cook's Hancock Service Station
Frank & Ann Rose's Airflight Cafe
Chris Carstensen's 76 Union Station
J.G. Grant Motel
Larry Schulz's Rustic Motel
Sally Smith's Snow Pack Cafe
The Mellard Ranch
The Butterworth Ranch

DUNMOVIN

Nelson's White Mountain Cafe

GILL'S OASIS

Ray & Marge's Cafe & 76 Union Station

LITTLE LAKE

Earl Sullivan's Chevron Station & June's Snack Bar
Burkhart's Kennedy Meadows Pack Trains

HORNBECK

C. Hornbeck's Rock Shop
Florence & Johnson Richfield Service Station

BRADY

Brady's Cafe & Mobil Service Station

