

Price 10c

EIGHTH ANNUAL

Nº 510

Lone Pine
STAMPEDE



MAJESTIC MT. WHITNEY

Souvenir Book

April 22-23, 1950



Inviting Pools — Fishing at its best — Lone Pine Creek

Page Sponsor: **SIERRA CAFE AND COCKTAIL LOUNGE**



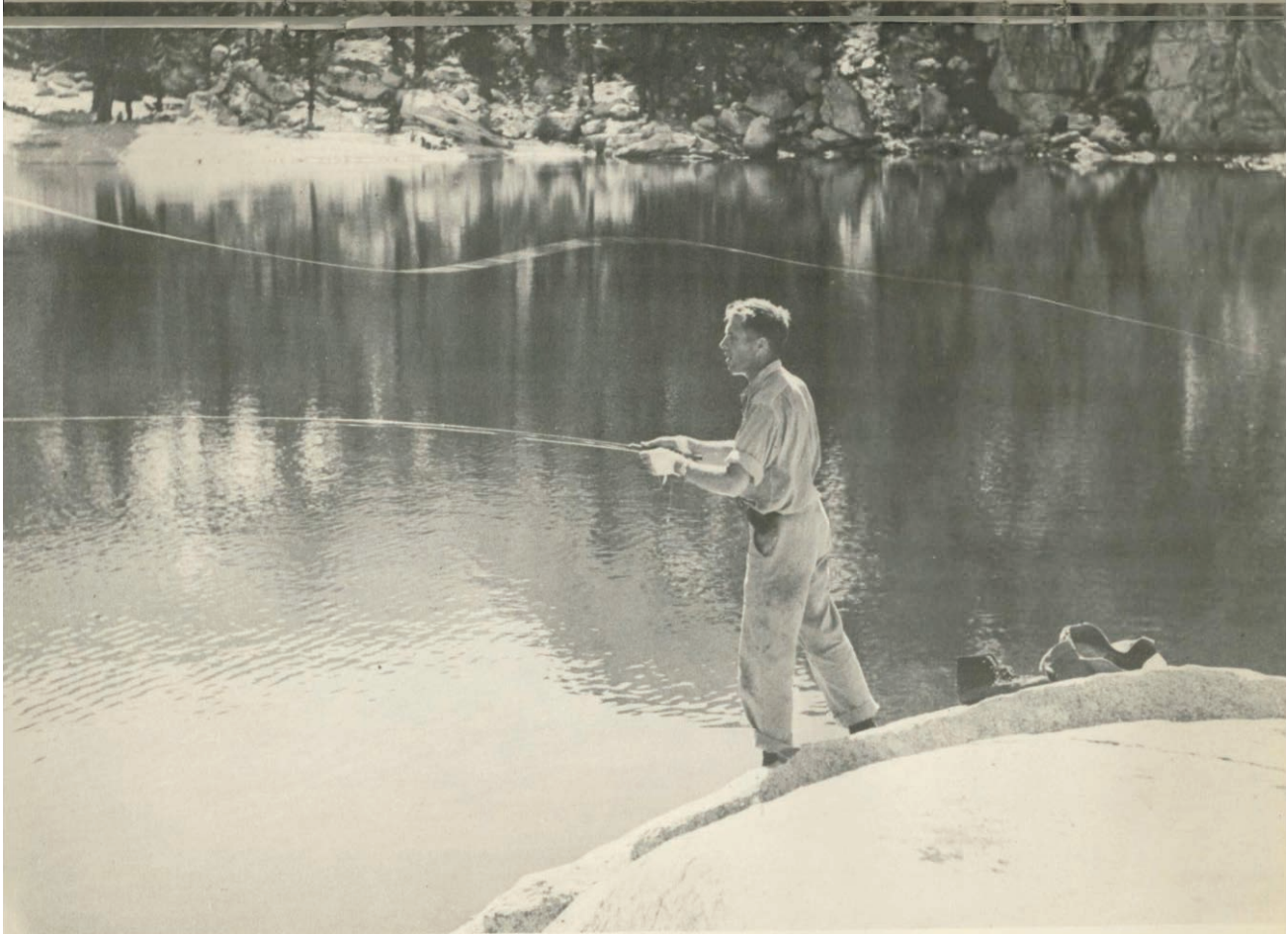
Yakima Canutt takes a spill in scene for "Army Girl," shot by Republic Studios east of the Owens River in 1934 and 1935

Half-Page Sponsors: **FRONTIER MOTEL • COPELAND YARDS**



ROUND-UP — Gene Autry (in white hat) and his cowboys round up a herd of stray cattle in this scene from Columbia's "Cow Town," shot at Lone Pine

Quarter-Page Sponsors: DOW HOTEL • MILLER CHEVROLET • LLOYD'S SHOE STORE • SOUTHERN INYO MEDICAL GROUP



Trying his luck in Lone Pine Lake, an easy hike from Whitney Portal. A great number of lakes in the area provide excellent trout fishing

• L. C. BENNEY CO. • SMOULDER BEITZ CO. • GEORGE'S LIQUOR STORE • INDIAN TRADING POST



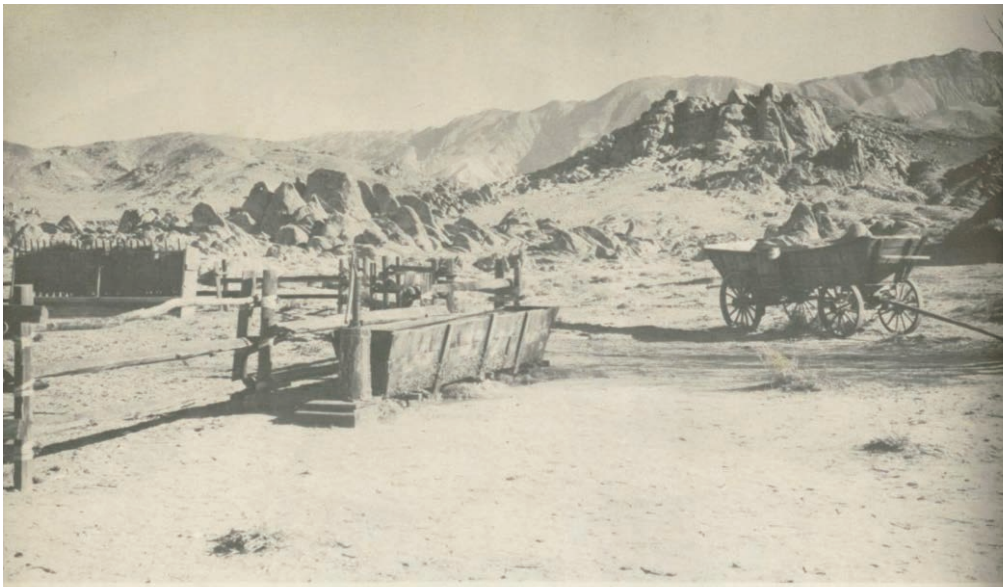
An exciting shot from Columbia's "Mule Train," starring Gene Autry and filmed at Movie Flats in the Alabama Hills.

Quarter-Page Sponsors: MAX'S SPORTING GOODS • NOGALES CLUB & CAFE • KNIGHT BROS. • BANK OF AMERICA



MYSTERY — Gene Autry questions (left to right) Kenne Duncan, Gregg Barton and Boyd Stockman about the death of a stranger in this scene from Columbia's "Mule Train," made at Lone Pine

Quarter-Page Sponsors: QUALITY MEATS & L. P. BAKERY, GROCERY • LONE PINE CAFE • HOPKINS HARDWARE • LONE PINE DRUG STORE



Scenes at "Rawhide" set in the Alabama Hills. A 20th Century-Fox production, "Rawhide" stars Tyrone Power and Susan Hayward. Susan's double is seen sitting on the rail at Rawhide Station in the lower photo

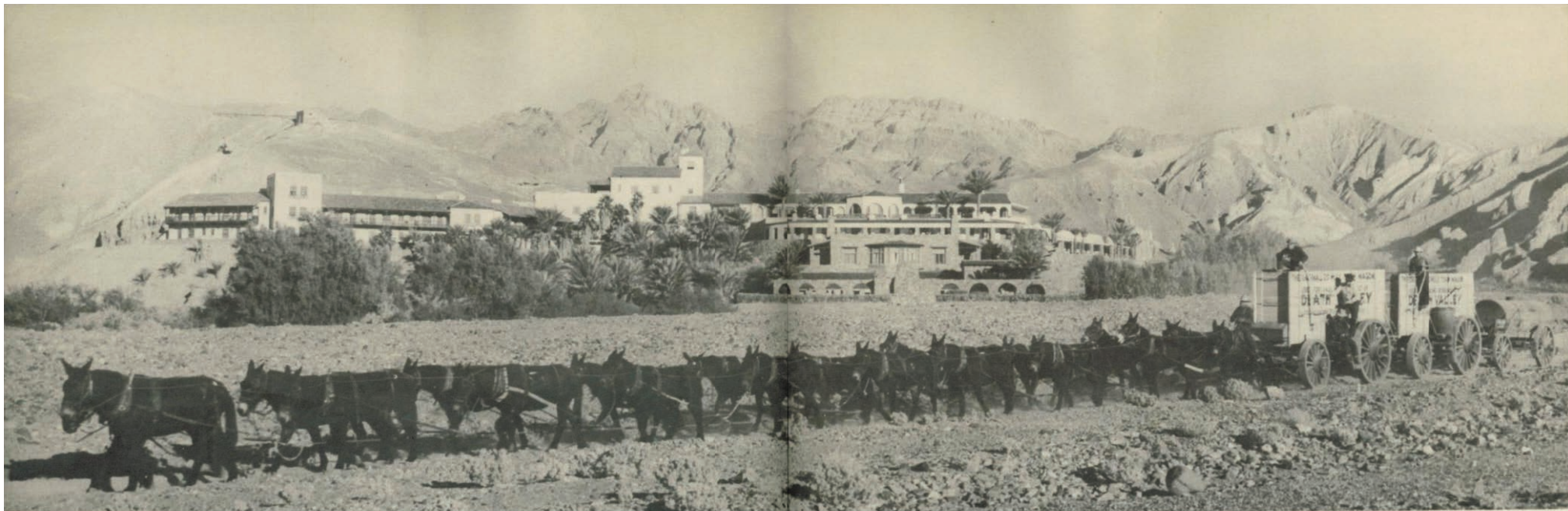
Page Sponsor: **YOUNG'S MARKET COMPANY**



The traveling Technicolor camera films a moving shot of Glenn Ford, Luther Adler and Joseph Buloff in the Alabamas for the Columbia drama, "The Loves of Carmen," starring Rita Hayworth and Ford.

Rita gets a cup of steaming coffee at the "chuck truck" on location in the Alabama Hills.

Sponsors: **HALE'S WELDING SHOP • LONE PINE THEATRE, R. A. PIERSON • "RED'S" MOBILGAS STATION • VALLEY SALES • MARGARET'S PERMANENT WAVE SHOP • BERNIE'S FOUNTAIN & JERRY'S DRUG • JIM'S BARBER SHOP • CRAWFORD'S SIERRA MOBILGAS STATION • FRANK LASKY • BURKHARDT'S SERVICE • DAY'S TIME CLINIC • TATUM'S LAUNDRY • VALLEY BARBER SHOP.**



Fraser's Photos, Pomona, California

Twenty-Mule Team, with Stampede President R. B. Spainhower up on the wheeler, hauling an original Death Valley borax wagon. Furnace Creek Inn is in the background. The team, trained by Spainhower, was featured in last December's Centennial Celebration at Desolation Canyon, Death Valley.



The Mule Skinner's Outlook

Lone Pine Stampede, Inc.

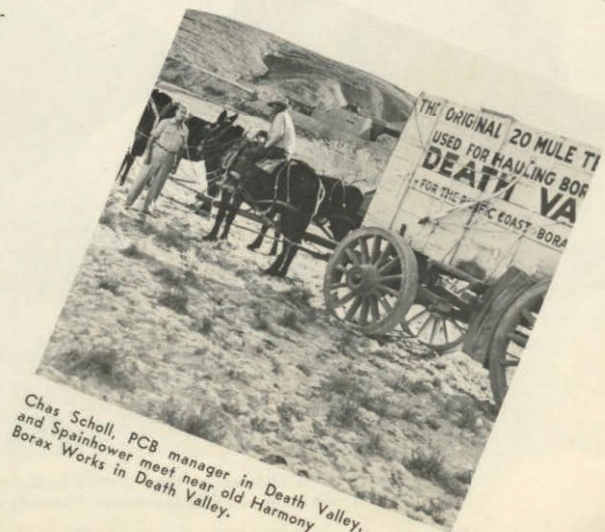
R. B. Spainhower, Pres.
Ben Baker, Vice-President
Walter Jones, Exec. Sec.-Treas.
Mrs. E. H. "Ted" Cook, Sec.

OTHER TRUSTEES

Frank Chrysler
Otto "Slim" Honerleh
Fred Reynolds
E. H. "Ted" Cook
Henry Olivas
C. D. Ruiz

COMMITTEE MEMBERS

George Anits
S. C. "Dinty" Moore
Harold Gates
Harry J. Lee
Jack Hopkins
John A. Lubken
Howard Miller
Bob Rutherford



Chas Scholl, PCB manager in Death Valley, and Spainhower meet near old Harmony Borax Works in Death Valley.



SONNY TUFTS in the Alabamas making a picture for Columbia Pictures, Inc., talks things over with Russ Spainhower, Stampede president

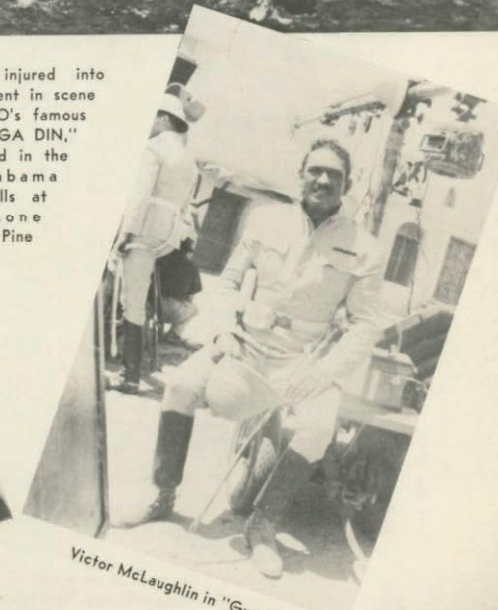
Quarter-Page Sponsors: INYO CAFE • WESTERN TRUCK LINES • ELLIS MOTORS
• MT. WHITNEY PALACE



Bringing injured into
cantonment in scene
for RKO's famous
"GUNGA DIN,"
filmed in the
Alabama
Hills at
Lone
Pine



Sam Jaffe as Gunga Din, the waterboy



Victor McLaughlin in "Gunga Din"

Page Sponsor: JOSEPHS



A HOOT GIBSON movie making company on location at Lone Pine (Gibson on horse) in the early 20's. Director Linn Reynolds is seated holding little boy, and Ray Ramsey leans on camera

Quarter-Page Sponsors: FEAR'S CHEVRON SERVICE • CHALFANT PRESS • INYO COCA COLA • EASTERN SIERRA COMPANY



The Bill Boyd (Hopalong Cassidy) movie troupe on location at the hacienda in Lone Pine. "Hoppy" is seated center, without hat; Producer Harry Sherman is seated at Hoppy's right, Director Les Selander next, and at left is Actor Russ Hayden

Quarter-Page Sponsors: CHAS. M. SPITZNAGEL, NOTHING BUT INSURANCE • TOMMY'S SPECIALTY SHOP • BURKHARDT'S SERVICE • WELLS FARGO



ANCHORVILLE, U. S. A., western town street scene set at the Spainhower Ranch, Lone Pine, used by Bill Boyd and company for Hopalong Cassidy westerners.

Quarter-Page Sponsors: DR. DOUGLASS DYER • G & G MALT SHOP • WHITNEY THEATRE • KERN WHOLESALE



This spectacular scene from Universal-International's Technicolor "BAGDAD" shows the Black Robes, band of desert outlaws, riding to attack a caravan carrying arms and ammunition to Bagdad.

Sponsors: MT. WHITNEY SALES & SERVICE • SCHROEDER'S RICHFIELD SERVICE • LONE PINE CLEANERS • BRYERTON'S FIRESTONE STORE • DAN E. NELSON, UNION OIL PRODUCTS • OWENS VALLEY ELECTRIC • EARL TERRY, STANDARD OIL CO. • EVE BLANDING • BILL'S FLOWER SHOP • RALPH TEMPERLY • EDNA'S COFFEE SHOP • SMITTY'S GARAGE • MT. WHITNEY MOTEL • MT. WHITNEY ROCK PRODUCTS

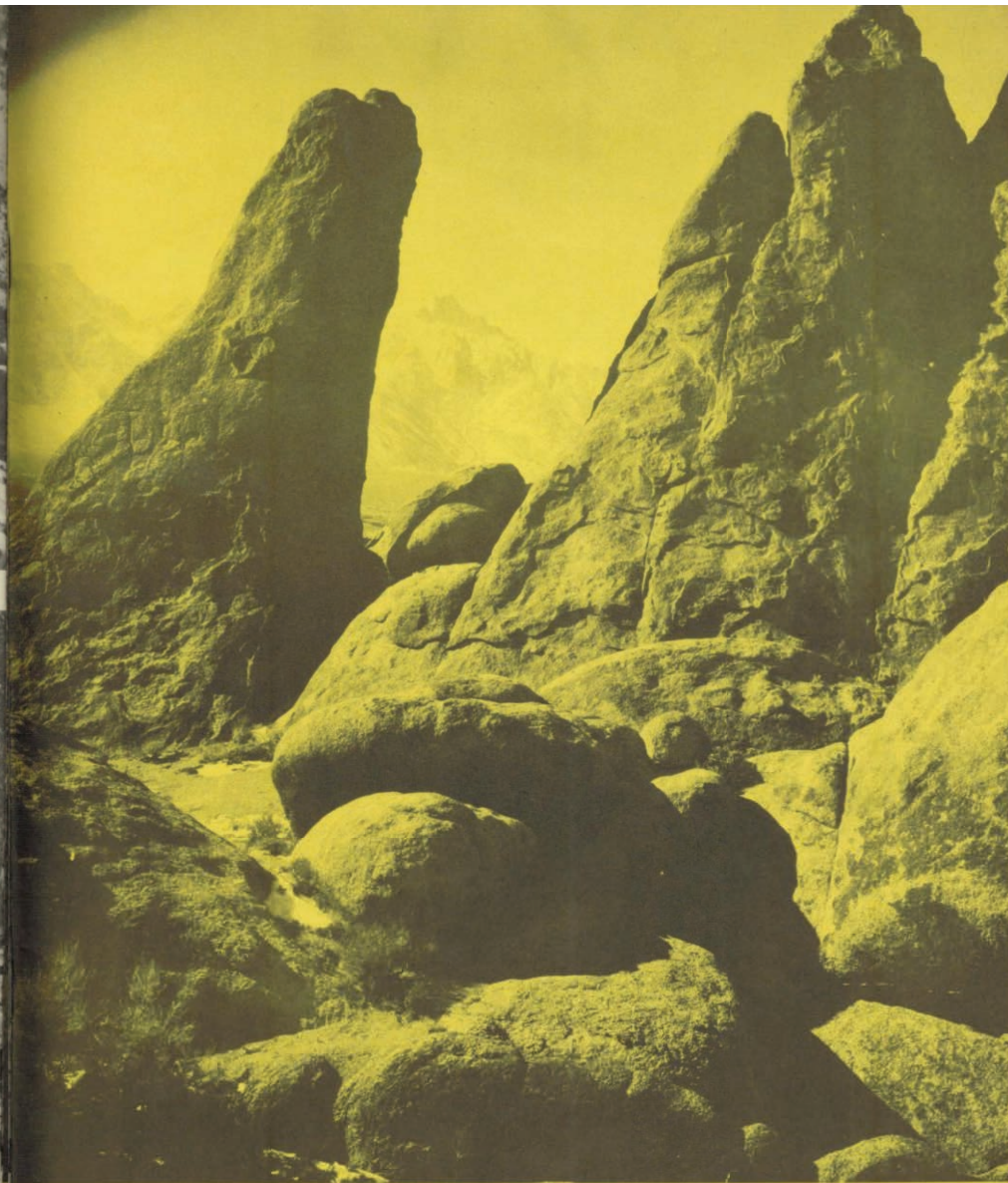


Snow Sports in the High Sierras Near Lone Pine



Packing in to the High Sierra country from Lone Pine

Half-Page Sponsors: **HENDERSON'S INSURANCE AGENCY** • **MT. WHITNEY PACK TRAINS**



Picturesque upthrusts in the Alabama Hills, Lone Pine, locale of countless western motion pictures

Half-Page Sponsors: **SPANISH GARDEN** • **CORRAL CAFE & BAR**



Lone Pine Lake (in foreground); Owen's Valley in distance
from Mt. Whitney Trail

Page Sponsor: LYON'S BROS. MT. WHITNEY CAFE