

6TH ANNUAL

LONE PINE STAMPEDE

**AFFILIATED WITH
CHAMBER of COMMERCE**

**SATURDAY
and
SUNDAY**

◆
**APRIL
24 - - 25**



6 MAJOR EVENTS 6
RCA APPROVED OPEN SHOW

OFFICIAL PROGRAM FOR THE LONE PINE STAMPEDE

1948

6th ANNUAL LONE PINE STAMPEDE



Today marks the start of another Lone Pine Stampede, in fact, the Sixth Annual Celebration of its kind. It is the earnest hope of the sponsors that this show will be the best ever seen in Lone Pine.

Often, people who have not taken part in the management of a community celebration, do not realize the work and effort that is put forth for a successful rodeo. The entire town is needed with its full support. This has been the reason that Lone Pine has been able to go ahead each year and improve the quality of its program. The committee in charge has no wish to take the credit for success, but to publicly acclaim the people and organizations of Lone Pine who have so graciously given of time and money.

This year is the beginning of what we hope will continue to be a three-day celebration. Thanks goes to the Lions Club of Lone Pine with the hope that they will continue next year to help us put on the extra day of program. Such support on their part has meant a lot of good publicity for the town and has created a great deal of interest from other communities.

As our show opens, accept our thanks for your patronage and please enjoy yourselves.

—Lone Pine Stampede



Come to **PENNEY'S** First!

Lone Pine



Insist on!
**COWBOY
BOOTS**
by
TONY LAMA
THE BEST IN THE WEST

Lloyd's Shoe Store



WELCOME To
The STAMPEDE!

The Leading Hotel Between Los Angeles and Reno



MARGARET COOK

At the Cross Roads of
Sierra Trails and Death
Valley... Out Where
the Best Begins.



BRAHMA BULL RIDING



Time starts when bull leaves chute. Eight seconds will be allowed for ride before signal is given by timer. Riding must be done with one hand and loose rope, with or without handhold, or rigging and one hand. No knots or hitches to prevent rope from falling off bull when rider leaves him. Rope must have bell under belly of bull.



Riders who are knocked off at chute, or if bull falls, are entitled to a re-ride at discretion of judges. If rope breaks for any cause, contestant is entitled to a re-ride on same bull. If rider makes qualified ride with any part of rope in riding hand he is to be marked.

Rider is disqualified if he is bucked off, not ready when called, touches animal with free hand, or uses sharp spurs.

INSURANCE

"For Everything Insurable"

ARTHUR W. FYFE

Phone 2052

Henderson Agency • Lone Pine, Calif.

This is the Kind of

" P E P "

Your Car Will Have

WHEN IT IS

SERVICED AT

FEAR'S
CHEVRON STATION



STAMPEDE LIVESTOCK



The livestock used in the Lone Pine Stampede is rented from Wilfred Cline of Lone Pine. Cline is one of the leading Rodeo Stock men in California and Nevada. Much credit is due him for the fine cooperation that he promotes between the contestants and the management. Cline is one of an old Inyo County family and is well known all over the state.

LONE PINE TRANSFER



Eva Haugen

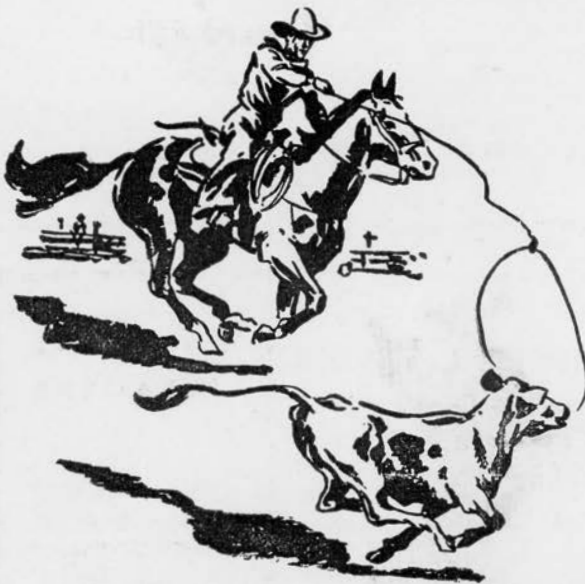
CALF ROPING

In this event the time starts when the calf passes the barrier. Two loops are allowed and the calf can be caught in any manner, providing rope goes over the head first.

Contestant must adjust rope and reins in a manner that will prevent horse from dragging calf. When a roper busts a calf intentionally, in the opinion of the judges, roper is disqualified.

Rope may be dallied or tied hard and fast. Contestant must dismount, go down rope and throw calf, then cross and tie any three feet. If calf is down when roper reaches it, the calf must be let up and thrown by hand. Tie must hold until passed by tie judge and roper must not touch calf after giving finish signal until judge has completed his examination.

Ten seconds penalty for beating or breaking barrier.



OWENS
VALLEY
ELECTRIC



A. R. STRINGER



21st Year in
Lone Pine.

MILLER CHEVROLET

Sales



Service

HOWARD L. MILLER

FORD



LINCOLN



MERCURY

Ellis Motors

Lone Pine

Howard Ellis

Bishop

... Sales and Service ...

**TATUM'S
LAUNDRY**



**PROMPT SERVICE
PICK-UP & DELIVERY**

LONE PINE

Phone 3312



**LONE PINE
CLEANERS**



**HOME-TOWN
SERVICE**

Russell Bell

See Mt. Whitney Through Our Telescope

Max's Sporting Goods Store



HUNTING & FISHING EQUIPMENT AT CITY PRICES

LONE PINE HOTEL - CAFE



CATTLE INDUSTRY IN SOUTHERN INYO



One of the oldest industries of southern Inyo, the cow business carries on through the work of true "cow-men". These men, despite depression, drought, hard-to-get Forest Reserve permits, and lack of sufficient grazing land in the valley—even with leases from the City of Los Angeles—are still going strong.

Herefords are the predominating breed, though the past several years have seen Durhams, as well as Brahmans, making a showing. All bulls running on open range are registered. Spring work gets into full swing before the various herds start out for the mountain ranges. Preparatory to this summer drive are days of gathering, parting, branding, vaccinating and spraying for protection against flies. Climaxing the summer's activities is the one big pay-day of the year, after the beef are gathered and brought to the home ranch for early fall shipment to market.

Although the cattle industry has been changed by present-day regulations, much of the color and tradition of the old West remains in southern Inyo. Not a thing of the past are the one hundred-mile, ten-day treks from winter to summer range. (Who said a little bull goes a long way?) John Lubken, veteran brand owner and permittee of fifty years, has weathered both good times and bad, and can tell you that much of the old color remains in the cow business. The chuck wagon, the temperamental and blasphemous cook, the practical jokes and horseplay, riding guard at night . . . these are not the fiction of a Roy Rogers western, but a reality. Getting up and hazing out the critters before dawn, whether it be in a snow storm or an Owens Lake fog; the substantial "mid-day" meal at 9:00 in the morning—often with 'rocks in the beans and sand in the meat'; pride in a good horse or a trail-wise cow, are part of the experience of every cattleman in this country.

. . . This Article by Courtesy of . . .

GEORGE BROWN - MARK LACEY - ARTHUR LUBKEN

JOHN LUBKEN - FRED REYNOLDS - WILFRED CLINE - RUSSELL SPAINHOWER

1948

• Lone Pine Chamber of Commerce . . .



The 6th Annual Stampede is sponsored by the Lone Pine Chamber of Commerce, now in its fourth successful year of community service.

The lack of some type of civic group to coordinate the numerous mailed and personal inquiries pertaining to Southern Inyo, without considering the many additional aspects within the realm of such an organization, had been acutely felt for many years.

Largely through the inspiration of Geo. D. Shultz, M.D., the Lone Pine Chamber of Commerce came into being. Moreover, Dr. Shultz consented to serve as its first president, followed with successive incumbencies by Earl S. Terry, Ralph A. Fear, and during 1948 under the capable guidance of Wm. J. Bauer.

Other current officers are: R. D. Mantle, secretary; Ted J. Garcia, treasurer and Ralph Temperley, executive-secretary.

Headquarters for the Chamber of Commerce are at Mr. Temperley's professional quarters, where (among other things) is maintained the Calendar of Community Events, an instrumentality assisting in the prevention of conflicting dates for scheduled events of schools, service clubs and social, fraternal and veterans' organizations.

The Chamber of Commerce is in continuous touch with its constituents by means of monthly meetings of its 18-member Board of Directors, and quarterly meetings of the entire membership.

The activities of the Chamber of Commerce have been numerous. Recently, to promote civic cleanliness, the installation was made of all-metal refuse cans, with self-closing lids, placed at numerous points along Lone Pine's Main street.

Currently in the process of printing are 15,000 2-color pictorial folders for free distribution, high-lighting the numerous attractions of Southern Inyo.



For Rest and Comfort

Mt. Whitney Motel

J. VIENCEK, Manager





Lone Pine Drug Store



RUPERT RENFROW

BEN BAKER

The Stampede joins the rest of Lone Pine
in using this space to compliment and pay tribute
to the following living 'Old Timers' who have done so much to aid in
the growth and development of our town.. The stability of any community
is, to a great extent, measured by the steadfastness of its citizens. The people
listed here have the honor of being the mortar in the foundation of our city.



JOHN H. LUBKEN

IGNACIO RUIZ

CRIS CARRASCO

FELIX MEYSAN

A. H. BERT JOHNSON



Neatness

Quality

DeWitt Morgan

The Painting Cowboy

PAINTING AND DECORATING

"Work of the Better Kind"

Lone Pine

California

BAREBACK BRONC RIDING

Bareback bronc riding is one of the most spectacular events of the day. The broncs are ridden without saddles, one hand rigging to be used. Riders may use their own rigging if it is not over 10" in width at hand hold and not over 6" 'D' ring, or not a freak. Judges to decide on all rigging. Horses are numbered and drawn for. Eight seconds allowed for ride before signal is given by timer. Time starts when horse leaves chute. Riders who are knocked off at chute or whose horse falls out of chute are entitled to a re-ride at discretion of judges.



Douglass W. Dyer

BS - DDS



LONE PINE - - CALIFORNIA



Nothing But

INSURANCE

CHARLES M. SPITZNAGEL

BISHOP, CALIFORNIA

With Cowboys it's horses and saddles and dames,
With me it's all policies, premiums and claims.
Each man to his own works . . . so says the poet,
And believe me, the Cowboy and I sure know it.
If he took my job he'd go off his nut,
And if I rode a horse, I'd get a sore butt.

Best Wishes

from

Young's Market Company

Distributors of

Fine Wines & Spirits

and

Leo Willett

YOUNG'S SALES REPRESENTATIVE
IN INYO and MONO COUNTIES



MAIN OFFICES: 1610 W. 7th ST., LOS ANGELES

BRANCH OFFICES:

SAN DIEGO

PALM SPRINGS

LONG BEACH

TEAM ROPING



Team roping is regarded by many contestants as the outstanding event of a rodeo.

Time starts when steer crosses the barrier. One roper must first catch head, half head or horns of steer, and the other must catch one or both hind feet. Each is allowed two loops. If either misses with both loops, team receives no time.

If the animal falls before the second rope is on the hind feet, he must be permitted to regain his footing. Both ropes must be on the steer and horses when tie is started. Steer must be tied below hocks.

Catching by head and one front foot disqualifies team.

CORRAL CAFE

Cocktails at Their Best! . . . Liquors



WHISKERINO CONTESTANTS ATTENTION!

A FREE PHOTO of your Beard will be given with our compliments. All you do is come in and ask for it.

C. M. RICHARDS

226 NORTH MAIN

LONE PINE



ARE YOU FIT TO BE TIED?

DO YOUR SHOPPING AT

JOSEPHS

1895

1948

GLENN GRAHAM



PLASTERING CONTRACTOR

ELMER

"MOOSE-NOSE"

SCHROEDER



RICHFIELD PRODUCTS

Lone Pine, California

WITH THE TOWN
FOR THE TOWN

BRYERTON'S
FIRESTONE STORE



Sponsoring
THE BURRO CORRAL

PARADE TROPHIES

★ 6 MAJOR EVENTS

\$1200 cash awards divided into \$200 per event, by Stampede Committee, plus contestants' entry fees.

★ BEST ALL-AROUND COWBOY

Special award by Inyo Store, Pendleton Western Shirt, Pair Levis.

\$10 cash award by Lone Pine Cleaners.

★ INYO - MONO BRAND OWNERS' STEER STOPPING

1st Prize: To be awarded by Roy and Mary Adamson of Olancho.

2nd Prize: Novelty Gift by Earl and Rose Carr of Lone Pine.

★ MUSICAL CHAIRS

Silver Belt Buckle Set awarded each day's winner by Indian Trading Post of Lone Pine.

★ MERCHANTS' WINDOW DISPLAY

\$25 cash award by Pittsburgh Plate Glass Co.

★ PARADE AWARDS

Best Dressed Boy or Girl (under 10 years) Mounted or Unmounted. \$10

Merchandise award by Bryerton's Firestone Store.

★ BEST WESTERN COUPLE

\$50 Howard Davies Memorial Award by the Stampede Committee.

★ BEST COWBOY

\$25 Cash; 2nd Prize, Pair Levis by Josephs, Lone Pine.

★ BEST COWGIRL

\$25 Cash; 2nd Prize, Pair Levis by Josephs, Lone Pine.

★ BEST WESTERN SCHOOLBOY

\$10 Cash

★ BEST WESTERN SCHOOLGIRL

\$10 Cash

★ BEST MOUNTED WESTERN GROUP

Large Photograph of winner suitable for framing.

★ BEST MARCHING GROUP

Prize Ribbon.

★ BEST COMMERCIAL FLOAT

Prize Ribbon.

★ BEST DECORATED AUTOMOBILE

Prize Ribbon.

★ BEST NOVELTY ENTRY

Prize Ribbon.

★ BEST PACK TRAIN

Prize Ribbon.

★ DOKKS' CHILDREN'S AWARDS

Best Cowboy (under 6) \$3.

Best Junior Cowboy (age 6 - 12) \$3.

Best Cowgirl (under 6) \$3.

Best Cowgirl (age 6 - 12) \$3.

★ SPECIAL ROPER AWARD

\$25 to be awarded to the Best Roper by Mrs. Margaret Cook of the Dow Hotel.

COMMITTEES

6th Annual Stampede



R. B. SPAINHOWER, President - WALTER JONES, Secretary
Jack Hopkins - John Morris - Ben Baker - Fred Reynolds - C. D. Ruiz
E. H. Cook - Henry Olivas - George Anits - O. H. Honerlah
Harold Gates - Frank Chrysler - Bruce Morgan - Howard M. Miller
S. C. Moore - Rudie Henderson



GROUNDS & PARKING

Ben Baker, Henry Olivas, Frank Chrysler, Ted Cook, O. H. Honerlah,
Bruce Morgan, John Morris

COMMITTEE ON PURCHASE OF HORSE AND SADDLE

Fred Reynolds, Frank Chrysler, C. D. Ruiz, Henry Olivas, Bruce Morgan

PUBLICITY

Jack Hopkins, John L. Morris, with the assistance of Rudie Henderson

DANCE

C. D. Ruiz, Fred Reynolds, Jack Hopkins

GATES

O. H. Honerlah, George Anits, Ben Baker

MUSIC

St. Clair Moore — Lone Pine High School Band

PARADE

Harold Gates, Henry Olivas, Bruce Morgan, Frank Chrysler

CONTESTANTS' ENTRIES

Walter Jones

"Use Your Dome - - Shop at Home"

With the Following Stampede Supporters



Adamson's Cafe	21	Lone Pine Drug Store	10
Milton Bates	26	Lone Pine Lbr. & Supply	Back Cover
Bishop Homecoming Assn.	23	Lone Pine Transfer	5
Eve Blanding	32	Max's Sporting Goods Store	7
Bryerton's Firestone Store	14	Mazie's Fountain	20
Burkhardt's Service	18	Miller Chevrolet	6
Red Butler	24	DeWitt Morgan	10
Cattle Industry	8	Morris' School Bus	20
Chalfant Press	26	Mountain View Malt Shop	27
Cheney's Garage & Service	20	Mt. Whitney Cafe	Inside Back Cover
Harry Cooper	26	Mt. Whitney Drug Store	27
Corral Cafe	13	Mt. Whitney Motel	9
Day's Time Clinic	20	Mt. Whitney Pack Trains	29
Douglass W. Dyer	11	Mt. Whitney Palace	25
Dow Hotel	3	Mt. Whitney Rock Products	32
Geo. DuFault	30	D. E. Nelson	18
Durkin & Mates	30	Nogales Club	32
Fear's Chevron Service	5	Owens Valley Electric Co.	6
Nick Fotes	20	Platt's Market	25
Frontier Motel	29	J. C. Pennzy Co.	3
Arthur W. Fyfe	4	Permanent Wave Shop	20
Edna's Coffee Shop	28	Margaret Peterson	22
Ellis Motors	7	Ray Pierson	20
Paul Emley	20	James Rogers	26
Glenn Graham	14	Elmer Schroeder	14
Hale's Welding Shop	20	Sierra Cafe & Bar	Inside Front Cover
Hopkins Hardware	26	Sierra Mobil Service	Inside Front Cover
Tom Hughes	25	Southern Inyo Medical Group	32
Indian Trading Post	28	Smithy's Garage & Service	24
Inyo Cafe	31	Spanish Garden	19
Inyo Store	21	Holger Sparrevohn	20
Jenny's Shop	20	Charles M. Spitznagel	11
Jim's Place	25	L. Steese	20
Josephs	14	Tatum's Laundry	7
Alex Krater	28	Ralph Temperley	28
Bob Kelso	19	Earl Terry	31
Lasky Feed Store	30	Tommy's Specialty Shop	30
Lloyd's Shoe Store	3	Valley Barber Shop	20
Lone Pine Bakery	25	Wells Cargo, Inc.	28
Lone Pine Cleaners	7	Western Truck Lines	27
Lone Pine Dairy	30	Young's Market Co.	12

SADDLE BRONC RIDING



Riders draw for mounts. If rider draws a horse he has once ridden during a contest he must draw again. Contestant must ride as often, and on any horse judges deem necessary to determine winner. Riding to be done with plain halter, one rein and saddle. Riding rein and hand must be on same side. Matter of re-rides will be decided by the judges.

After the horse leaves the starting place, every horse must be spurred first jump out of starting place high in the shoulders and rider must continue to spur throughout the ride to the satisfaction of judges. Rider is given credit for spurring over point of shoulders.

Ten seconds will be allowed each rider from time horse leaves the chute or snubbing horse before signal is given by the timer. Ride is completed when signal is given. Rider may not change hands on rein, wrap rein around hand, pull leather, or lose stirrup. He must be ready to ride when called.



"SUNDOWN SLIM" HAS RESERVED SLEEPING
SPACE AGAIN THIS YEAR IN OUR WINDOW

Burkhardt's Service

and

D. E. Nelson

UNION OIL CONSIGNEE

Thanks

To Bob Kelso

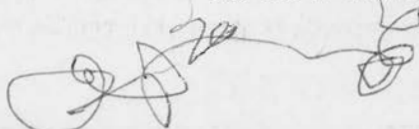
of the

EASTERN SIERRA CO. — BISHOP

and the

EASTSIDE BREWERY — LOS ANGELES

For Use of Loud Speaker



—LONE PINE STAMPEDE

Spanish Foods Our Specialty



COCKTAIL LOUNGE

and OFF - SALE LIQUOR



SPANISH GARDEN

25 YEARS IN THE SAME LOCATION

EARL and ROSE CARR

WE, THE FOLLOWING
BUSINESS MEN AND WOMEN OF LONE PINE
WISH SUCCESS TO THE STAMPED



- HALE'S WELDING SHOP
- DAY'S TIME CLINIC
- MAZIE'S FOUNTAIN
- VALLEY BARBER SHOP
- PAUL EMLEY, GENERAL CONTRACTOR
- NICK FOTES
- CHENEY'S GARAGE AND SERVICE
- RAY PIERSON
- JENNY'S SHOP
- HOLGER SPARREVOHN
- PERMANENT WAVE SHOP
- MORRIS' SCHOOL BUSES



L. STEESE



WOODWORKING
TEJAMA PACK SADDLES

INYO-MONO BRAND OWNERS STEER-STOPPING



In this event only registered brand owners of Inyo or Mono counties are eligible. Time starts when the steer crosses the barrier. Contestant is allowed only one loop, and steer must be caught by the head.

Trophy for first in this event is donated by Roy and Mary Adamson of Olancho; for second by Earl and Rose Carr of Lone Pine.

This event was originated by the Lone Pine Stampede and affords extra interest because so many of the contestants get stage fright during the event. Some who rarely miss on the range, hardly get their steer in sight.

ADAMSON'S CAFE and COCKTAIL LOUNGE



CABINS - SERVICE STATION

ROY and MARY

OLANCHO, CALIFORNIA



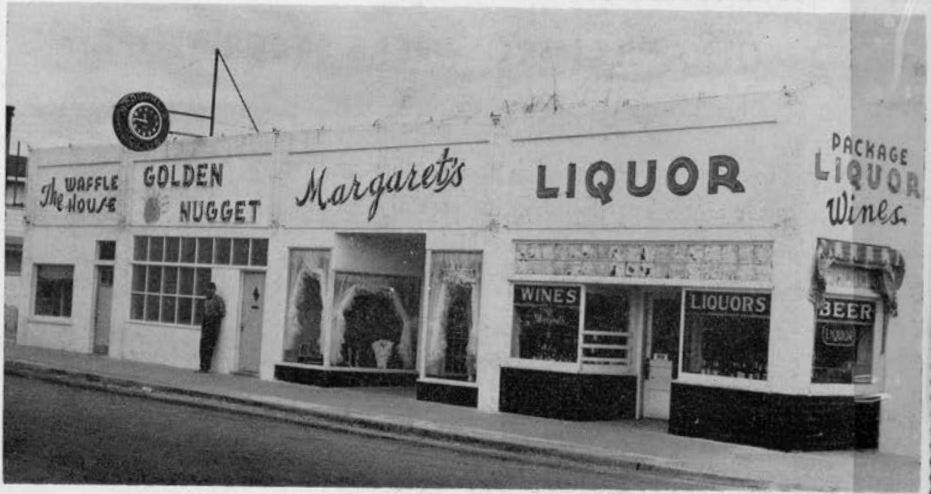
Whether you go back to the farm or up to the mountains
... off to the desert, or stay in your own back yard
... you'll find our gay fashions are good playmates.

INYO STORE

LEEVINING

— LONE PINE —

BISHOP



ALL - OUT FOR LONE PINE



WAFFLE SHOP

GOLDEN NUGGET

DRESS SHOP

PACKAGE STORE



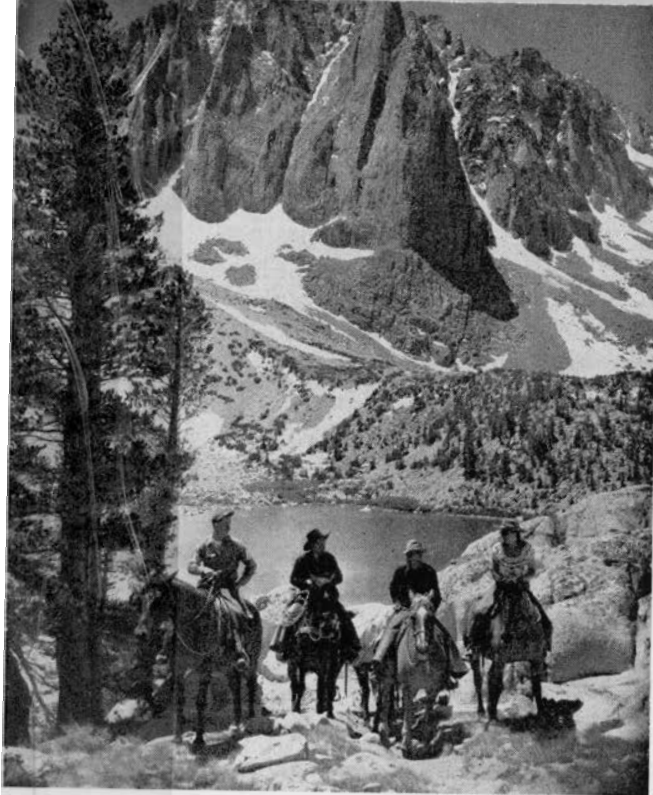
OWNED AND OPERATED BY

Margaret Peterson

BISHOP

- LONE PINE -

TONAPAH



This

. . . Summer

Spend Your

VACATION

In

Inyo - Mono!

BUT . . .

LABOR DAY

Attend The

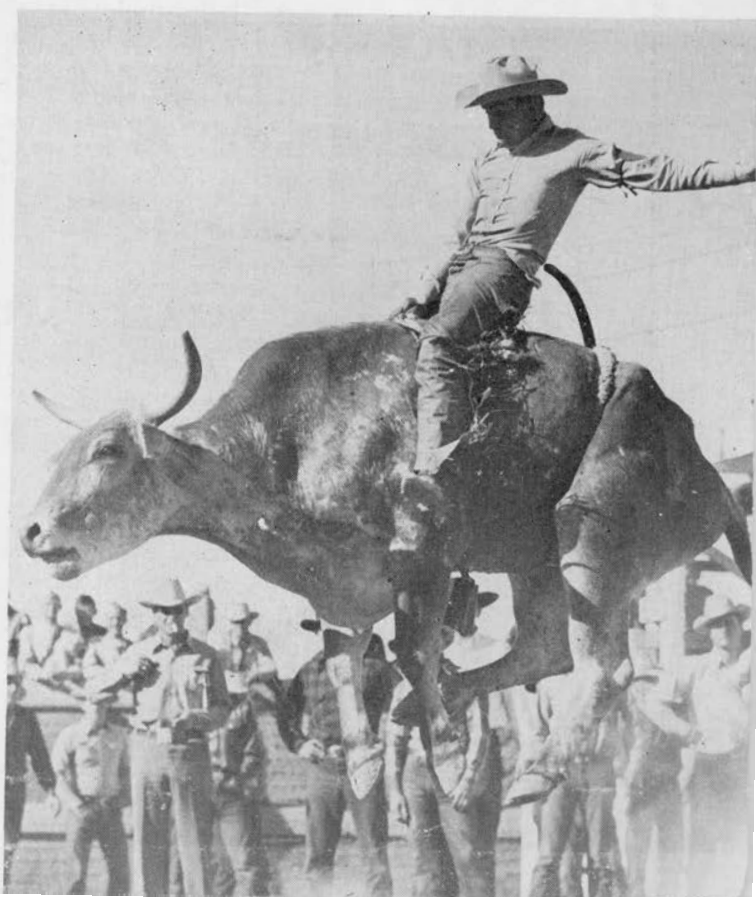
BISHOP RODEO

AT BISHOP

September 4 - 5 - 6



Sponsored by
BISHOP HOMECOMING
AND LABOR DAY ASSN.



• Lone Pine Lions Club . . .



The manifold details necessary to the Annual Stampedes have heretofore been handled by community residents serving as the Stampede Committee. One of the initial steps in broadening the participation by other community organizations was the acceptance by the Lone Pine Lions Club of the sponsorship of the Whiskerino Contest and Burro Races.

An active service group for the past 18 years, the Lone Pine Lions Club, with its 70 members, is particularly well qualified to add to the enthusiasm and interest of the 6th Annual Stampede.

Coincidentally, the Regional Meeting of the several zones in District 4D has been scheduled for April 23rd. Lions Club Stampede events for that date include the Kangaroo Court, to judge the merits of the pleas of those males who would not—or could not—sprout the necessary hirsute adornment essential to the 6th Annual Stampede. Awards totaling \$110.00 will be presented by the Lions at Saturday night's Western Dance in the High School auditorium.

The Burro Races will also be held on April 23rd, with suitable awards by the Lions.

Current officers include Roy Joseph, president; Taylor Johnston, 1st vice-president and zone chairman; Ray Gillaspie, 2nd vice-president; R. D. Mantle, treasurer; George Malcomb, secretary.

District Governor Arthur Beliveau of Alhambra, and Deputy District Governor Merle Otto of Trona, will head the visiting delegation. Plans have been made to entertain approximately 200 Lions and guests at a banquet in the High School Gymnasium.

Of more than passing interest are the numerous community activities of the Lone Pine Lions. Club members recently staged four performances of the comedy-farce "Calm Yourself," netting more than \$1,000.00 for night-lighting the high school athletic field. This project is now complete. "Calm Yourself" was directed by Laura Thouvenell of Lone Pine.

Last year, the Lions sponsored the high school athletic field "Fence Fund," raising more than \$2,500.00 for that worthy cause.

The 6th Annual Stampede salutes the Lone Pine Lions and the visiting members from District 4D!

SMITHY'S GARAGE & SERVICE

N. P. SMITH, Manager

405 East Post Street — Lone Pine

MOTOR REBUILDING

COMPLETE RADIATOR SERVICE

PAINTING

BODY & FENDER REPAIRING

LONE PINE

Mobil Service

"RED" BUTLER

LONE PINE BAKERY

New Equipment
Quality

AND

PLATT'S MARKET

Same Quality
Meats

MT. WHITNEY PALACE

POOL — BILLIARDS — SOFT DRINKS

PAUL and JACKIE WRIGHT

JIM'S PLACE

—INDEPENDENCE—

Open 7 Days A Week

Delicatessen

The HIGH SIGN of REFRESHMENT!



The Pause That Refreshes

INYO COCA COLA BOTTLING WORKS

TOM HUGHES — BISHOP

CHALFANT PRESS, Inc.



Printers

Publishers

Stationers

LONE PINE — INDEPENDENCE — BISHOP — BRIDGEPORT



"33 BREWS in 1"



BLUE RIBBON
DISTRIBUTOR

HARRY COOPER



WHOLESALE ONLY

In Lone Pine It's

Texaco



Service

MILTON BATES

Compliments

of

James Rogers

25 YEARS IN LONE PINE

MOVIE INDUSTRY IN SOUTHERN INYO

For years the movie industry in southern Inyo has claimed attention near and far. The versatility of the Lone Pine area as a background for any type of picture is unequalled. The Alabama Hills have probably been in more pictures than even the best known star. Their brown, weather-beaten rocks have provided countless hideouts for rustlers, and such film epics as "Gunga Din", "Tycoon", "Lives of the Bengal Lancers", "Brigham Young" have had the majority of their sequences filmed there. The High Sierras, as a background, provide the most beautiful scenery to be seen anywhere in the world.

Newly erected is Anchorville, a Western street, which has everything from bars to a school house. The availability of horses, cattle and cowboys, not to mention the many sunny days and nearness to Hollywood, has made this area one of the outstanding movie locations in the United States.

We can get your hauling done a
bit faster than this picture.



WESTERN TRUCK LINES

**Jerry's
Mt. Whitney Drug
Store**



JERRY ALLEN

**MOUNTAIN VIEW
MALT SHOP**



DOROTHA WEEKS



JEWELRY and
CLOTHING

INDIAN
TRADING
POST



DON'T GET OFF YOUR
HORSE THIS WAY!

WELLS CARGO
INC.

LONE PINE CALIFORNIA

RAY HILL, Manager

KRATER'S INSURANCE

SURETY BONDS



Alex Krater

INDEPENDENCE, CALIFORNIA

H
U
R
R
Y
!



I'll Say I AM in
a hurry to EAT at

EDNA'S

COFFEE SHOP

RALPH TEMPERLEY



Public
Accountant

LONE PINE

FRONTIER MOTEL



—Open Soon—

ONE-HALF MILE SOUTH OF LONE PINE ON 395



MT. WHITNEY PACK TRAINS

IKE LIVERMORE, Owner

BRUCE MORGAN, Manager



PACK STATIONS AT: SAGE FLAT - CARROLL CREEK - WHITNEY PORTAL
LONE PINE - - - CALIFORNIA



You will
also be

Pleased after we Work on

Your Automobile



Geo. DuFault

Olancho, Calif.

Tommy's Specialty Shop



RADIOS - SERVICE

FRIGIDAIRE APPLIANCES

CAMERA SUPPLIES



COMPLIMENTS TO STAMPEDE



Joe Durkin

-

Charles Mates

LONE
PINE
DAIRY



PASTEURIZED
MILK

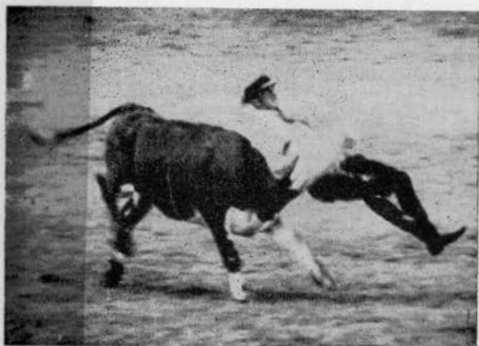
LONE PINE



LASKY
FEED
STORE



ALL
YOUR FEED
WANTS SUPPLIED



BULLDOGGING

The steer must be caught from horse, brought to stop and twisted down. If steer is accidentally knocked down before being brought to a stop, or is thrown by the bulldogger by putting the animal's horns into the ground, it must be

let up on all four feet and then thrown. Steer is considered down only when it is lying flat on its side, all four feet and head straight.

Each bulldogger has a "hazer" who attempts to keep the steer running straight ahead. The hazer must retire from the field as soon as the wrestler catches the steer, and he must not render any assistance to him. Ten seconds penalty for breaking barrier.

STANDARD

OIL PRODUCTS

R P M



EARL TERRY

Distributor

LONE PINE

INYO CAFE



LONE PINE, CALIFORNIA



Nogales Club Cafe

POOL - CIGARETTES - BEER



CORRINE NOGALES

GUS NOGALES

EVE
BLANDING



PUBLIC
ACCOUNTANT

NOTARY PUBLIC

Open Daily - 9 to 5



Southern Inyo Medical Group



GEORGE D. SHULTZ, M.D.



WILLIAM E. GULLETT, M.D.

LONE PINE - CALIFORNIA

