

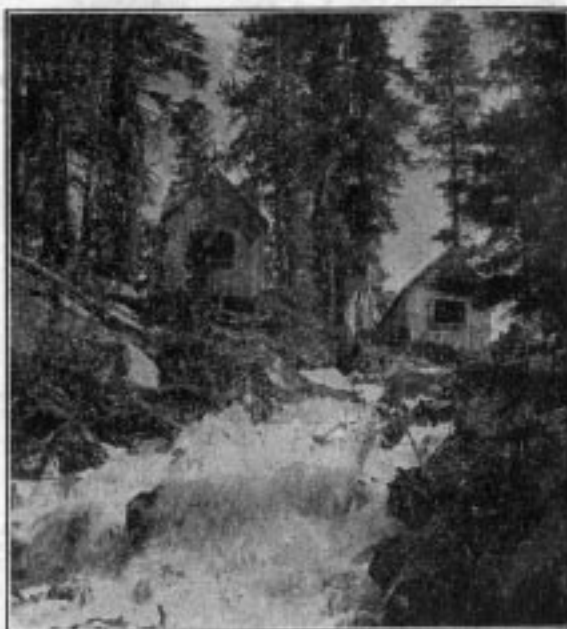
# WILDYRIE

One of the most scenic spots in America is located in the Mammoth Lakes region of the High Sierras, surrounded by nine beautiful lakes and with a background of high, rugged mountains.

Wildyrie is nestled among the big trees between the Twin Falls and on the shore of Lake Mamie. From the beautiful dining room one looks down upon a chain of lakes three hundred feet below and across Long Valley to the White Mountains. There are many scenic hiking and horseback trips to be taken from here. Among them are Rainbow Falls, Devil's Post Pile, Earthquake Fault and Mammoth Mountain, from the top of which one can view over fifty lakes.



LODGE  
DINING ROOM  
HOUSEKEEPING CABINS  
POSTOFFICE  
TELEPHONE  
GAS STATION  
STORE WITH  
FRESH MILK, MEAT, FRUIT AND  
VEGETABLES  
FISHING TACKLE  
FREE SHOWERS



CABINS AND WATERFALL AT "WILDYRIE"

When it's summer at Wildyrie  
I am coming back to you,  
Little cabins in the mountains,  
And the lakes so clear and blue.  
Once again I'll go a-fishing,  
Where all day the fish will bite,  
And to waterfall's sweet music  
I shall sleep all through the night.

—By Sybil Miller

Air:  
"When It's Springtime in the Rockies"

## AMUSEMENTS

FISHING  
HUNTING  
HORSEBACK RIDING  
BOATING  
BATHING  
HIKING  
EVENING CAMPFIRE



## ACCOMODATIONS

Lodge with large fire place and Beautiful Dining Room, also comfortable Cabins fully equipped. (Inner Spring Mattresses.)



## RATES AMERICAN PLAN

One person ..... \$4.50 per day  
Two persons ..... \$8.00 per day



## HOUSEKEEPING CABINS

2 persons, per day, \$2.50; week, \$15.00  
3 persons, per day, \$3.00; week, \$18.00  
4 persons, per day, \$3.50; week, \$22.00

Fuel furnished free of charge

A deposit of \$5.00 required on reservations