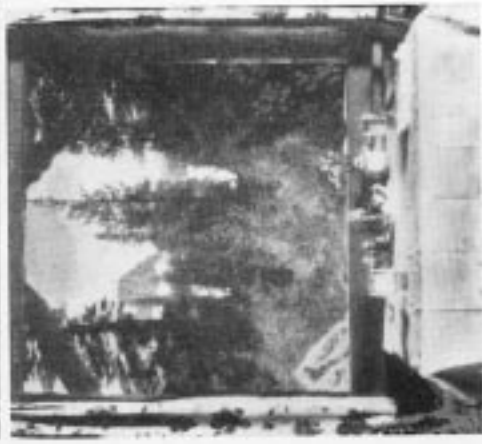


TAMARACK LODGE ON THE SHORE OF TWIN LAKES AMID MAJESTIC PINES



Tamarack Lodge

In the Heart of the Sierra



Crystal Crag and the Twin Cascades as seen from the dining room

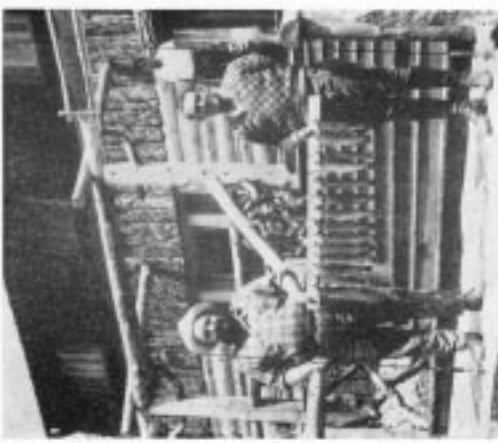
The Sierra Setting of Tamarack Lodge

THE completion of the new state highway through Owens Valley has brought Southern California within a few hours' drive of one of the most fascinating and stupendously grand mountain regions of the world. The great Inyo-Mono Playground extending 150 miles northward from Mount Whitney, the highest peak in the United States, includes most of the holdest and most inspiring scenery of all Sierra Land, a veritable paradise for both tourists and sportsmen.

With its hundreds of towering, saw-toothed peaks, its perpetual snow fields, its glacier-polished canyon walls, its thousands of Alpine lakes and meadows, its world-famed pine and giant sequoia forests abounding in wild life, its majestic cataracts, and its dashing trout-

filled streams—it surely has no equal in all America.

And along the entire eastern slope of the Sierras, there is no setting more charming than that of Tamarack Lodge, located on Twin Lakes, in the famous Mammoth Lakes group north of Bishop. There are nearly a dozen wooded lakes and lakelets all within easy walking distance, most of them well stocked with Rainbow, Lochleven, Cutthroat, Steelhead or the famous Golden Trout. Majestic old Mammoth Mountain dominates all the region; only eight miles away are the unique Devil's Post Pile and the celebrated Rainbow Falls on the headwaters of the San Joaquin, while just beyond lie Shadow Lake and Thousand Island Lake at the base of Mts. Ritter and Banner on the eastern border of the Yosemite National Park.



A string of Rainbow and Lochleven taken from Twin Lakes