

In the Heart of a Fishing and Hunting Paradise

(OR A SWELL PLACE FOR JUST PLAIN LOAFING)

Tom's Place is an all-year resort catering to the hunter, fisherman and winter sports enthusiast and is located on Rock Creek only four miles from sensational Crowley Lake. We are also the closest point of access to the famous Gorge of the Owens River. Within easy driving distance are more than 40 lakes, all well stocked with gamey trout.



The surrounding country is a veritable hunter's paradise with excellent deer hunting right at our door. Within a few miles some of the finest Honker and duck shooting in the country will be found.



We operate our own ski lift and are within easy driving distance of the McGee Mountain and Mammoth ski areas.

Home cooking will be enjoyed in our cafe at moderate prices.

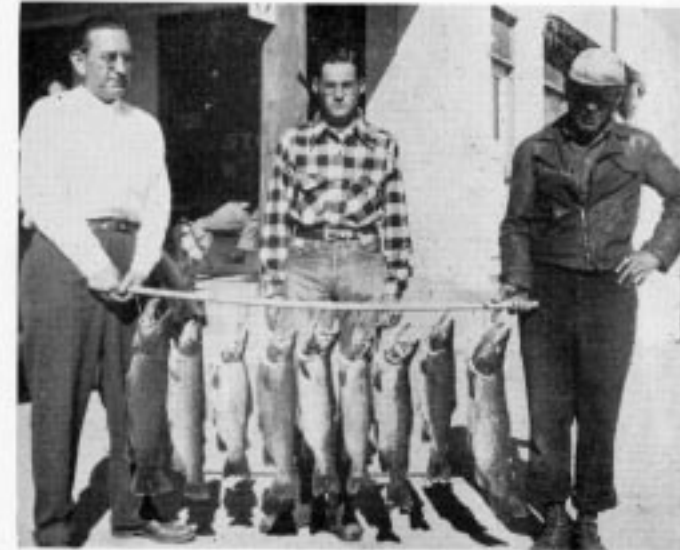


TWO SEASONS—OUR CAFE AND STORE IN THE SUMMER AND BELOW, AFTER WINTER HAS LAID A MANTLE OF WHITE OVER THE PROPERTIES.



A HIGH SIERRA LAKE—TYPICAL OF MANY THAT YOU FIND WITHIN A DAYS FISHING DISTANCE OF OUR RESORT.

YOUR HOST—BILL BURSE WITH A 200-POUND BLACKTAIL BROUGHT DOWN BY HIM LAST SEASON NEAR TOM'S PLACE.



"ONE PICTURE—IS WORTH A THOUSAND WORDS," SO SAY THE CHINESE. HERE IT IS. TROUT FROM NEARBY STREAMS.

DID YOU SAY HUNTING?—A GROUP OF SANTA MONICA SPORTSMEN WITH A GAY'S BAG.

