

770

From Independence *Over* Kearsarge Trail

| | |
|--|----|
| To Onion Valley..... | 11 |
| To Gilbert and Flower Lakes..... | 13 |
| To Matlock Lake..... | 14 |
| To Kearsarge Pass (11,988)..... | 14 |
| To Kearsarge Lakes..... | 15 |
| To Bullfrog Lake..... | 16 |
| To Charlotte Lake via Bullfrog..... | 18 |
| To Vedette Meadows..... | 19 |
| To Junction Meadows on Bubb's Creek..... | 22 |
| To Camp, Kings River..... | 35 |
| To Hume Saw Mills..... | 36 |

From Independence *Over* Oak Creek Trail

| | |
|--|----|
| To Oak Creek Trail Pass (13,228)..... | 15 |
| To Baxter Lake..... | 17 |
| To Rac Lakes..... | 20 |
| To Paradise Valley..... | 24 |
| To Junction of Bubb's Creek and Kings River..... | 32 |

From Independence *Over* Saw Mill Trail

| | |
|--|----|
| To Saw Mill Meadows..... | 12 |
| To Saw Mill Lakes..... | 15 |
| To Woods' Lakes..... | 18 |
| To Junction of Woods' Creek and Kings River..... | 30 |

From Independence *Over* Shepherd's Creek Trail

| | |
|--------------------------|----|
| To Parkinson Meadow..... | 17 |
| To Tyndall Creek..... | 21 |

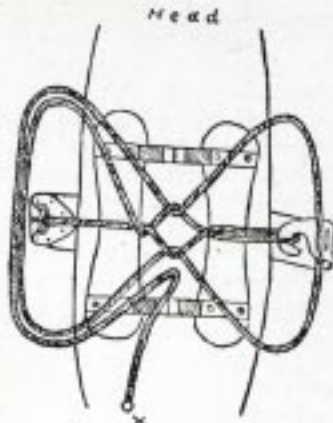
The Robinson Pack Train

I Will Furnish Stock With or Without Guides or Packers

But all stock must be paid for until returned to my corral, strayed stock included.

Staking out or tying up stock when in camp strictly prohibited, and if so found, we or any of my employees will bring back all said stock to my corral and no further charges will be made. No excuses accepted.

The Diamond Hitch.

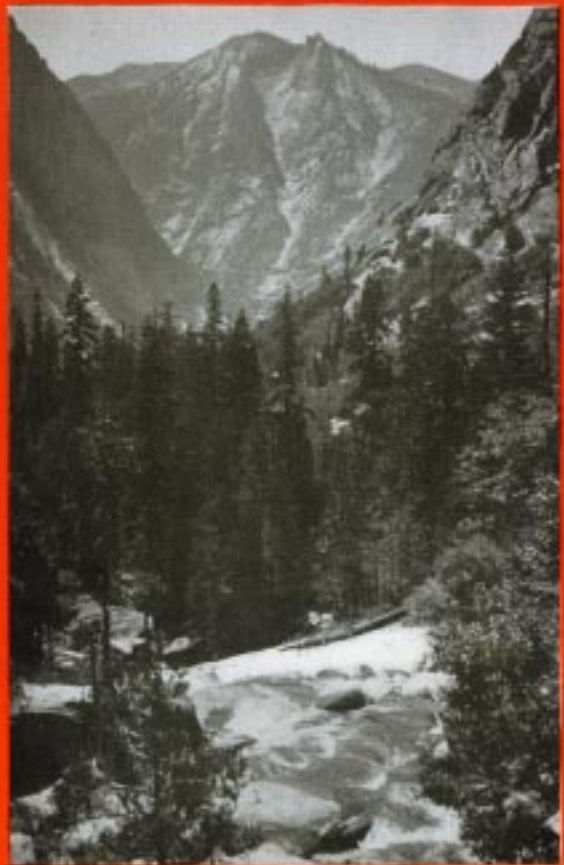


- Pack and Saddle Animals, per day each.....\$1.50
- Burros, per day each..... .75
- Packer and Guide (combined) \$5 per day and board

Address ALLIE W. ROBINSON, Proprietor
Independence, California

Follow the Trails to the Land of Solitude

"Circle" INFORMATION
BUREAU DISTRIBUTION



MT. WHITNEY
The Highest Point in the United States
Elevation: 14,502 Feet

"See the Sierra from a Saddle"

**ROBINSON PACK TRAIN
AND CAMP GROUND**

ALLIE W. ROBINSON, Proprietor
Successor to C. W. Robinson

INDEPENDENCE, CALIFORNIA