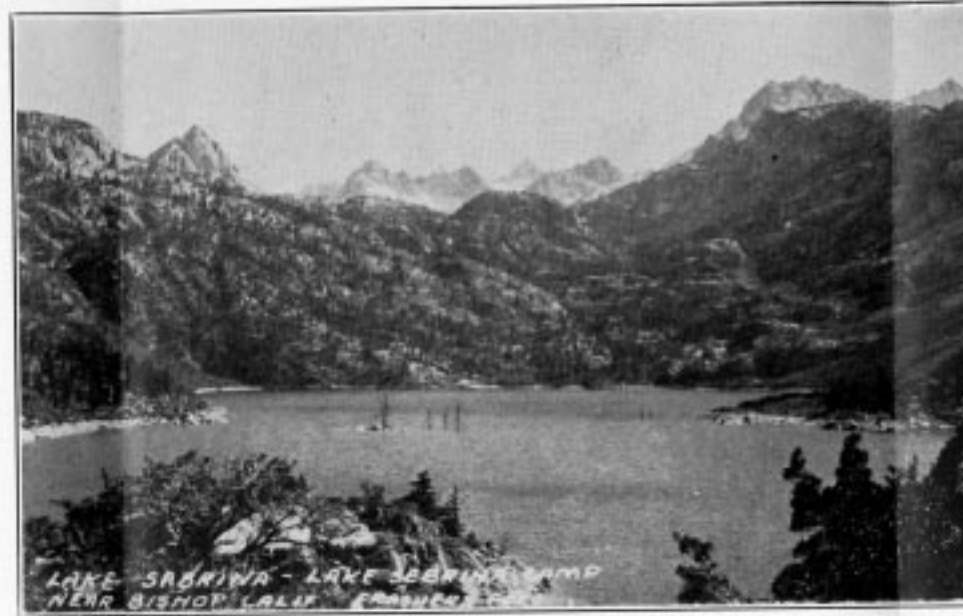


# Lake Sabrina Camp and Supply Station

Lake Sabrina Camp and Supply Station is situated in the High Sierras at an elevation of 9,200 feet on the North Fork of Bishop Creek. It is just eighteen miles from Bishop, over a well-traveled mountain road, and is reached via the Mojave, Little Lake, Lone Pine, and Bishop main highway. By train, take the Southern Pacific Railway to Laws, or Lone Pine, California, from which points a stage is available for transportation to Lake Sabrina Camp.



## Fishing, Hunting and Horseback Riding

Excellent Rainbow, Steelhead, and Black Tahoe trout fishing, in season, in Lake Sabrina, and North Lake, two famous lakes in the High Sierras each a mile distant from camp which can be reached by car and in many nearby lakes, and two adjacent streams is available to guests of Lake Sabrina Camp. Golden Trout fishing is excellent in Piute Pass, which can be reached by horseback riding. The Bishop section of the High Sierras is noted for excellent fishing and hunting.

Good deer hunting, in season, is offered to the hunter.

Saddle horses may be rented for many enjoyable trips over wonderful High Sierras trails radiating in many directions from Camp.

The Camp comprises six comfortable, furnished cabins, completely equipped for housekeeping, accommodating one or two persons each, and two cabins, also completely equipped for housekeeping, accommodating two, three, or four persons each.



## RATES

The rates for each of these cabins are as follows:

Cabins accommodating one or two persons, \$2.50 per day; one or two persons, \$15.00 per week.

Cabins accommodating two, three, or four persons, \$7.50 per day; two three, or four persons, \$35.00 per week.

Cots for extra persons will be placed in any of these cabins at seventy-five cents per day per cot or \$3.50 per week per cot.

Monthly rates will be supplied upon application.

No charge is made for small children, unless additional bed space is required.

Housekeepers must furnish their own towels and must gather their own wood, an abundance of which is available in camp, and nearby.