

Golden Trout Camp

• **GOLDEN TROUT CAMP**—20 miles from Lone Pine, is located at 10,000 ft. elevation in the very heart of the Whitney Range of the Sierra Nevada. America's highest peaks are but a few miles to the north and offer mountain scenery that is unparalleled in its spectacular beauty.

• **THE CAMP IS REACHED** by either of two pack stations, the Mt. Whitney Pack Trains or the Cottonwood Pack Station.

• **MT. WHITNEY PACK TRAINS** is reached by an excellent road out of Lone Pine to the mouth of Carrol Creek at the foot of the towering eastern slope of the Sierras. A good trail ascends the slope by a series of switch-backs, through forests of pinon and, as the elevation increases, affords an unsurpassed view of Owens Valley and the mountains to the east. The ride from the pack station to the Camp is about four hours.

• **THE COTTONWOOD PACK STATION** is located approximately ten miles north of Olancho. A good dirt road leads into the mouth of Cottonwood Canyon and to the pack station. From the station the trail follows up beautiful Cottonwood Creek, past lovely pools and falls, the old saw-mill, and also after about a four-hour ride, to Golden Trout Camp.

• **THE MT. WHITNEY PACK TRAINS** may be reached by addressing your inquiries to them at Lone Pine, Calif. Cottonwood Pack Station is reached via Cartago, Calif.

• **GOLDEN TROUT CAMP** is situated on Cottonwood Creek in a grove of Forest giants. About three miles above the Camp lies the first of the famed Cottonwood Lakes. The Lakes are at, or above, timber line and are stocked with the supreme prize of the fresh water angler, the fighting Golden Trout.

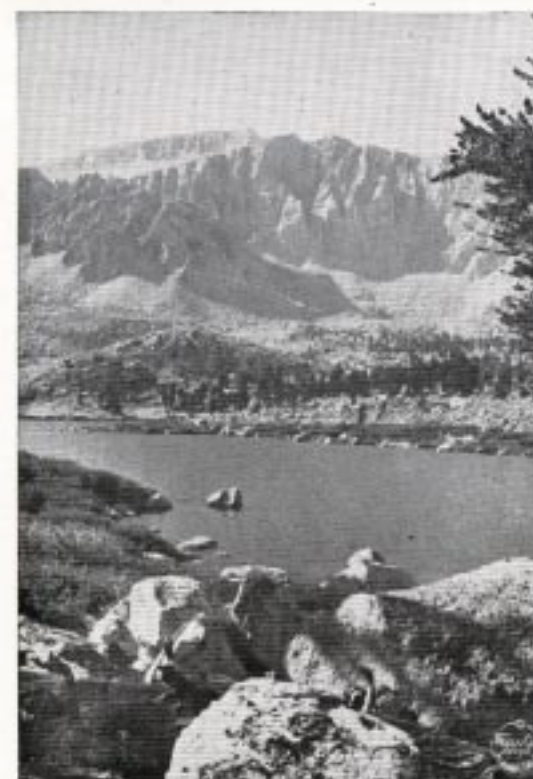
• **A WORD ABOUT GOLDEN TROUT CAMP**—The accommodations are in good tents with floors. All tents are fitted with comfortable beds and adequate heaters for which wood is furnished. Some are fitted for housekeeping to suit the needs of those who do not wish to take their meals in the Camp Dining Room. The Dining Room is in a log cabin which also houses a small general store. Telephone facilities are available here. In another cabin are located hot and cold shower baths, a most welcome feature in a wilderness camp.

• **THE CAMP** has been in continuous operation for over thirty years and during its operation has offered recreation and sport to thousands of outdoor lovers who yearly come not merely to fish and hunt, but to spend long, peaceful days in one of the few remaining primitive areas of this country. There is a wide variety of one-day side trips to be made from the camp and lunches are packed for those who wish to spend a full day along the mountain trails.

• **THE CAMP** has been designed to offer an ideal vacation for those who enjoy the simple comforts of life amidst outdoor surroundings of incomparable grandeur. That the success of this aim has been achieved is evidenced by the increasingly large list of those who return for a visit year after year.



A View of Golden Trout Camp



Majestic Mount Langley

• **AS TO CLIMATE AND TIMING OF YOUR TRIP** to Golden Trout Camp—The camp season runs from June 15th to October 15th. The lakes are open to fishing from July 1st, but in June the streams offer excellent sport and the mountains with their still-melting snow afford their most impressive views. Deer season opens in mid-September and continues until after the closing of the camp.

• **CLOTHING**—Warm, light clothing is advisable at all times as, although the days are sunny and warm, the mountain air at night becomes crisp and cold. Riding clothes for the trip in and for trail rides are recommended. Plan your outfit with a keynote of comfort, as living in the High Country is at all times informal. No matter when you may visit us you may be assured of our every effort to make your stay a memorable and enjoyable one which you will surely plan on repeating.