

SUGGESTIONS FOR FOUR WEEK TRIPS

No. 1.

Andrews Camp, South Lake (Rainbow trout); Long Lake (Loch Leven trout); Bishop Pass, Dusey Lake (Golden trout); Dusey Creek, Middle Fork Kings River (Golden trout); Little Pete Meadows, up river to Muir Pass, Lake Helen, Lake Wanda, Evolution Lake, Evolution Creek (Rainbow trout); to South Fork San Joaquin River (Rainbow trout); Blaney Hot Springs, Jackass Meadows, Bear Creek, Mono Creek (Rainbow trout); Rattlesnake Lake, Cassidy Meadows, Middle Fork San Joaquin River (Rainbow trout); up river to Soda Springs, Shadow Lake (Rainbow trout); Red's Meadows, Mammoth Pass, Lake George (Rainbow trout); Lake Mary (Rainbow trout); Crystal Craig Lodge, by car to Bishop.

Four Weeks Trip.

Bishop by car to Crystal Craig Lodge on Lake Mary, Lake George (Rainbow); Mammoth Pass, Red's Meadows, Soda Springs, 77 Corral, Middle Fork San Joaquin River (Rainbow trout); Mono Creek (Rainbow); Lower Hot Springs, up South Fork San Joaquin to Hell for Sure Pass, Tehipite Valley, Tehipite Dome, Kings River (Golden trout); Simpson Meadows, up Kings river to Palisade Creek (Golden trout); Grouse Meadows, Little Pete Meadows, Dusey Lakes (Golden trout) Bishop Pass, Long Lake (Loch Leven trout); South Lake (Rainbow); South Fork Bishop Creek (Rainbow and Eastern brook trout); Andrews Camp, by car to Bishop.

All trips are scenic and fishing excellent. Also fine hunting.

TERMS:—Trips under 10 days, \$2.00 per head per animal, \$5.00 and board for guides.

Two weeks or over, \$1.50 per day, per animal, \$4.50 and board for guides.

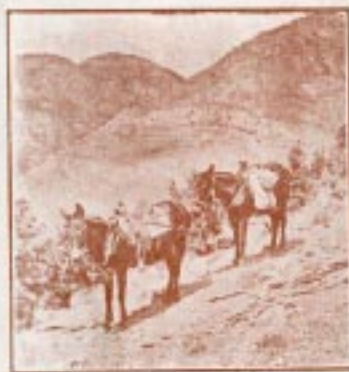
Four weeks or over, \$1.00 per day for each animal, \$4.00 and board for guides.

Best animals and equipment only. Competent guides and packers.



The Murmuring Pines

Outing Trips



Arranged by W. D. Cruse, Pack-
er, Bishop, California.