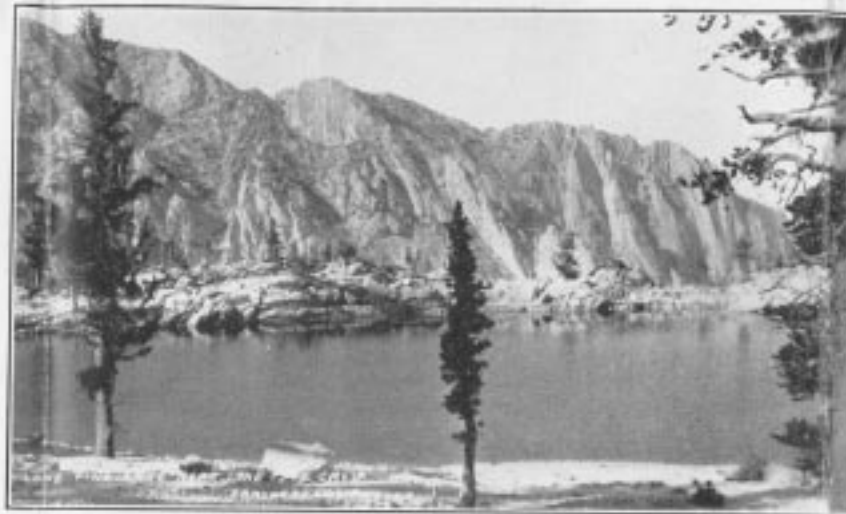


♦♦
THE HIGH SIERRA OF
LONE PINE DISTRICT . . .

LOFTY PEAKS, deep canyons, virgin forests, crystal-clear lakes and streams, offer one of the most beautiful and easily accessible regions in this whole mighty Sierra-Nevada range. The country abounds in Golden trout, the "beauty fish" of the high country, one of the gamiest fish known. It is a species distinct in itself and is native to this country.



♦♦
PLAN TO VACATION
IN THE HIGH SIERRA . . .

THERE MUST be a reason why more than a quarter million people annually vacation in the High Sierra. It is an ideal country in which to rest or to enjoy the beauties of California's most majestic scenic district. After a taste of its delights, you are beckoned to return again and often. To the sportsman, the High Sierra needs no introduction.

♦ . ♦ LET CHRYSLER AND COOK PACK YOU TO THE PLACE OF YOUR CHOICE IN THE BEAUTIFUL HIGH SIERRA RECREATIONAL REGION ♦ . ♦

The Kern River . . .

The headwaters of the Kern River, the portion which constitutes the "last frontier" for fishermen and nature lovers, is reached by trail over Whitney Pass, or by one of the southerly passes; namely, Army Pass, Mulkey Pass or Cottonwood Pass. In this huge drainage basin are found every variety of trout, at altitudes ranging from 6500 to 12,800 feet.

Whether a person fishes a stream or whips a fly in a lake, is all a matter of choice. There are many scenic attractions in this, the high country of Sequoia National Park. The "Grand Canyon" of the Kern is one of the seldom heard of wonders of the west, with towering cliffs reaching a maximum height of 3000 feet, fencing the Kern for thirty miles. Chagoopa Falls, Big Arroyo, Golden Trout Falls, the Post Pile, Natural Bridge, are some of the attractions associated with this wilderness region.

Easy to Reach . . .

It is easy to reach Chrysler and Cook pack stations, located near Lone Pine, California. The new, high-speed, all-paved highway, U. S. 395, brings one from Los Angeles on the south or Reno from the north to Lone Pine in only a few hours of easy driving along a scenic thoroughfare. This route is known as the Three Flags Highway and is open the year-round.